

LEAD FREE Plumbing Solutions



99.9% Lead Free

< 0.1% Pb



elson LF PRESS system
- AS 1432 Copper Tube
(WATER)

Product information and installation manual



elson PRESS are
Lead Free Watermark Certified.



LEAD FREE Plumbing Solutions

Elson Australasia is proud to introduce the ELSON Press range of copper and LF brass press fittings to suit AS 1432 Copper Tube.

Elson is the manufacturer and wholesale supplier of quality plumbing products specifically designed for the Australian market since 1993 and ISO 9001 accredited through SAI Global.

At Elson we're passionate about quality and offering the best design features on the market. ELSON LF Press is the result of years of in-house and third-party testing processes and raw material formulation to ensure the finest quality range of copper tube press fittings.

Elson's manufacturing portfolio includes a complete range of COPPER & LF BRASS PRESS fittings, BRASSWARE, TAPWARE and **BUSH** P E X water & gas jointing systems, all of which are fully approved to the required Australian and/or New Zealand Standards.

ELSON LF Press fittings are supported nationally by our sales and service team of professionals that are equipped to train and service Plumbers, Gas Fitters, Plumbing Merchants and Consultants.

ELSON LF Press fittings offer three specific system applications:

- Water – fittings with black EPDM O-rings.
- Gas – fittings with yellow HBNR O-rings.
- High Temperature / Solar – fittings with red FKM O-rings.

ALL fittings are manufactured from high quality, batch tested, ultra low lead DR Brass or Copper in sizes 15-100mm. All fittings 15-50mm include leak before press O-ring technology.

ELSON LF Press fittings are manufactured to comply with Australian Standard AS3688 certified by SAI Global and comply with AS/NZS 4020 for Water and AS/NZS 5601 for Gas. Certificate for LF brass press water fittings is WMKA 02497. Certificate for copper press water fittings is WMK 26127.

Contents

ELSON LF PRESS INTRODUCTION	4
ELSON LF PRESS FEATURES	4
ELSON LF PRESS KEY BENEFITS	4
ELSON LF PRESS WATER COPPER PRESS FITTING INFORMATION	5
ELSON LF PRESS WARRANTY	6
ELSON LF PRESS WATER TECHNICAL DATA	7
ELSON LF PRESS DESIGN CONSIDERATIONS	8
ELSON LF PRESS WATER INSTALLATION GUIDE	9
ELSON LF PRESS WATER FAQs	11
ELSON LF PRESS WATER PRODUCT LISTING	14
ELSON LF PRESS TOOLS	33
CERTIFICATE OF CONFORMITY	37

LEAD FREE Plumbing Solutions

ELSON LF Press Water is a comprehensive LF brass and copper press fitting system for use with conformant copper tube to AS1432 Type A and B Only: providing a durable and secure leak-proof joint for many water and Fire Service Applications. (Other Applications are possible based on requirements by consultation with Elson).

ELSON LF Press Water fittings are Watermark Certified (Certificate Number WMK 26127 for copper water fittings, WMKA 02497 for LF brass water fittings) and manufactured in accordance to AS3688.



Features

- “V” Profile Press Pattern
- 15mm - 100mm Water & Gas
- Hi - Temp Fittings
- All Brass Press fittings are made of Lead Free DR Brass
- “Leak Before Press” O-ring
- Adapt directly to BUSHPEX
- Novopress Tool for BUSHPEX & ELSON LF Press

Key Benefits

Leak Detection

Design features on the O-ring allows for missed press leak detection when tested correctly using the defined procedure in this manual.

Long Lasting Performance

When installed correctly as per the requirements of this document and other regulatory requirements.

Secure Joint

Secure and durable permanent joint ensures the fitting can not be tampered with.

Fully Certified and Tested

Extensive third party certification and testing offers peace of mind, in addition warranty and insurance is covered by Elson.

Flame Free

Flame free installation means no need for hot works permits and no need to lug around heavy bottles used for brazing.

Reduced Installation Time

Simple, quick and reliable installation translates to reduced labour time.

ELSON LF Press Fittings Information

Applications

ELSON LF Press Water Fittings are suitable for:

- Potable Water Installations
- Hot Water Installations
- Solar water installations (refer to table on page 7)
- Other media also possible (with consultation on application to Elson for approval)

Leak Before Press

The precise design of ELSON LF Press fittings allows water or air to pass the sealing element of unpressed fittings, thereby providing a leakage point during the commissioning of the system, when tested using the defined processes below.

When the fitting is pressed, the O-ring material compresses, filling the gaps, creating a leak free joint.

Final testing of the system should be conducted in accordance with AS/NZS3500 and any other additional local regulations and/or requirements.

Testing with Water

IMPORTANT: Unpressed fittings are identified by pressurising the system slowly, ensuring that all air is removed from the pipework, with a pressure range of 100 kPa to 350 kPa. Inspect each joint for visual signs of leaking. After conformance, conduct pressure testing as per AS/NZS3500.

Testing with Air

Important: Unpressed fittings are identified by pressurising the system slowly with air, increase the pressure to be between 50 kPa and 200 kPa. Inspect each joint with a leak check liquid material/spray for any visual signs of leakage. After conformance, conduct pressure testing as per AS/NZS3500.



Warranty

Elson as the manufacturer and wholesale supplier of quality plumbing products is passionate about quality, customer service and product support. Elson recognises the importance of providing the support, confidence and peace of mind for licenced installers to use ELSON LF Press fittings.

Accordingly, Elson will provide the same warranty on ELSON LF Press fittings as the copper tube used on the installation to a maximum of 25 years. Please note that if the warranty on the copper tube is 10 years then the ELSON LF Press fitting Warranty will also be 10 years. **Our warranty applies to fault or defect in the ELSON LF Press fittings only and does not cover fault arising from the external environment or caused by incorrect installation.**

In addition to this the warranty will only cover ELSON LF Press fittings installed by a Licenced Plumber or Gas Fitter in accordance with this TECHNICAL AND INSTALLATION GUIDE and AS/NZS 3500 for water and AS/NZS 5601 for Gas and any other local regulations and/or requirements. **The warranty only applies to installation with AS 1432 type A or type B conformant copper tube. All copper press tools MUST be kept fully functional and in proper working order as any leak resulting from incorrect pressing does not relate to and will therefore not be covered by this product warranty. Approved tooling and correct installation as outlined in this manual must be used.**

Tooling Repair and Servicing

Elson repairs and services Novopress battery tools at our National Distribution Centre in Minchinbury NSW. Please contact your local ELSON Press stockist. You can also contact Elson National Distribution Centre or your regional sales manager for any repair or service enquiries.

Technical Data/Uses (Water)

ELSON Press is suitable for use with Type A and B copper tube complying with AS1432.

Note: AS3688 has limitation for coverage on products to 95° Celsius at 1400kPa. AS4020 Testing is limited to 105° Celsius. The table below is a recommendation.

WATER O-RING SCOPE OF APPLICATION

Application	Comment	MOP [kPa]	TEMP [°C]	Water (EPDM)	HT (FKM)
Water Supply				Recommended	
Hot and cold potable water		1600	Up to 95	✓	✗
Solar systems (flat-panel collectors)	System capable of handling 200°C as a peak temperature but not sustained temperature over a period of time	1600	Over 95	✗	✓
	System operates at a sustained temperature of 200 °C (eg. At the solar collector)	1600	Over 95	✗	✓
Fire Services – Fire Sprinkler & Hose Reel	Capable of handling the required test pressure of 1700kPa or 1.5 times the design pressure as specified by AS2419.1	1600	Up to 95	✓	✗
Steam	Low pressure steam equipment	≤100	Over 95	✗	✓
Spring water	Must contact Elson	1600	Up to 95	✓	✗
Pump circulated HW systems	Compliant with EN 12828	1600	Over 95	✓	✓

Other media can be used subject to request on application with Elson.

Not Suitable:

Acetylene, Ammoniac gases, Coolant Inhibitor, Glycerine Triacetate, Medical Gas Applications, Methanol, Refrigeration and Air Conditioning Applications, Sodium Hydroxide, Urea Solution.

MOP[kPa] Maximum safe working pressure (continuous operating pressure), greater short duration peaks possible

TEMP(°C) Maximum continuous operating temperature (Celsius), greater short duration peaks possible

FKM Fluorocarbon Rubber

EPDM Ethylene Propylene Diene Monomer

Warning: The installer needs to verify that ELSON LF Press Solar fittings will not be subjected to temperatures and/or pressures that exceed the recommended operating Temperature and Pressure limits.

Solar System manufacturer’s operating parameters need to be verified and checked to ensure conformance for ELSON LF Press fitting application into their respective systems. This needs to be assessed for all aspects of the installation, commissioning and operation, this includes, but is not limited to Solar Panel Installation including pipework and ELSON LF Press Fittings that are installed and NOT commissioned/operational with water for a period of time.

Approved elson PRESS tools are Novopress ACO 153, ACO 203. These approved tools must be used with elson PRESS Jaws.

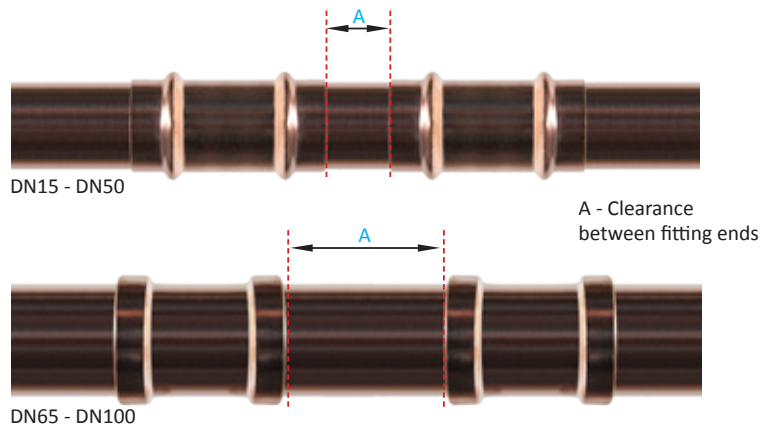
Other tooling with compatible jaws may be approved on application to Elson. Written approval is required from Elson before use on ELSON Press Product.

Design Considerations

Distance between ELSON LF Press fittings

A minimum separation between fitting installation needs to occur to ensure the press forming does not possibly compromise either joint during installation. The concentricity of Copper Tube Wall Thickness in the pipework can also affect the fittings integrity to seal when they are installed too close together.

The following table indicates the minimum separation distance required for ELSON LF Press Fittings by size of fitting. This distance must be applied between any fittings as a minimum from fitting edge to fitting edge. This Design requirement needs to be conformant to have warranty coverage on all ELSON LF Press fittings.



Tube Size	Minimum Clearance A (mm)	Tube Size	Minimum Clearance A (mm)	Tube Size	Minimum Clearance A (mm)
15mm	10	32mm	20	65mm	40
20mm	10	40mm	30	80mm	40
25mm	10	50mm	40	100mm	40

Distance between ELSON LF Press fittings

No Hot Works, (Soldering, Welding or Annealing) can be performed within a minimum defined distance of any installed ELSON LF Press Fittings.

The minimum separation distance by size is stated in the table below.

Considerations should be made prior to any installation that may require any Soldering, Welding or Annealing to ensure it is done prior to installation with ELSON LF Press Fittings.

If the defined minimum separation distances cannot be achieved and any Hot Work detailed needs to be performed, preventive measures need to be applied to ensure the installed fitting O-ring maximum operating temperature, defined in this document by O-ring Type, is not exceeded at any time by heat transfer or thermal conductivity.

It should also be noted that considerations also need to be taken to ensure installation location will not affect ELSON LF Press fittings maximum operating temperature with radiant heat and/or heat transfer during installation, commissioning and operation.

Tube Size	Minimum Clearance (mm)	Tube Size	Minimum Clearance (mm)	Tube Size	Minimum Clearance (mm)
15mm	400	32mm	1000	65mm	1800
20mm	600	40mm	1200	80mm	2000
25mm	800	50mm	1500	100mm	2500

Installation Instructions

Note: Check pipe and fitting compatibility; both the piping material (must be type A or B copper tube conformant to AS 1432) and the O-ring must be checked if suitable for purpose (see page 6) and the exterior environment must also be considered.

1. Cut the Tube

An appropriate copper tube cutter must be used to ensure a clean square cut.

Note: It is important that the copper tube is cut completely square, the end of the tube (outside) must be clean and free from any scratches or damage such as dints or deformity.



2. Remove Burrs

Make sure that the internal and external tube end is completely free from burrs or sharp edges by using a file or deburring tool.

Note: ensure over use does not affect the tube end outside diameter.



3. Inspect the Fitting

Before inserting the tube, check O-rings (15-50mm) and also spacers/grab rings (65-100mm) for correct placement, they are free of damage or any dust, dirt or debris. We recommend the fittings are retained in packaging up to the point of use where ever possible.



4. Marking Insertion Depth on Tube

All cut and deburred Copper tube ends for insertion into the fitting require an insertion depth mark to be applied to the tube prior to insertion into the fitting. The mark will be applied by measuring from the end of the tube with a ruler or tape measure and using a marker pen to the required length. The mark will ensure the tube is inserted completely into the fitting prior to press.

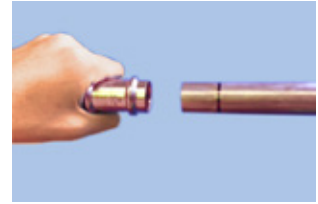


Table Insertion Marking Depth by Size

Tube Size	Marking Insertion Depth
DN15	19mm
DN20	24mm
DN25	25mm
DN32	27mm
DN40	34mm
DN50	42mm
DN65	45mm
DN80	52mm
DN100	62mm

5. Tube Insertion

The Tube should be inserted Parallel into the fitting Coupling ensuring no damage is caused to the O-ring or grab ring and spacer (DN65-100mm), ensuring the insertion mark is visible at the end of the fitting next to the fitting coupling end.



6. Press Tool Selection

The tool to be used must be conformant, well maintained and within its Manufacturers service requirement. The correct jaw type and size must be inspected to ensure it is clean and free from defects and contamination.



Note: only approved tooling may be used on ELSON LF Press fittings. Refer to Approved Tooling Table on page 7.

7. Press the Joint

The jaw must be placed over the fitting, correctly aligned and positioned. When all requirements are correct, the tool should be activated to press the joint. The tool should complete the correct cycle and the jaw ends should fully close on completion. If the tool does not complete the required cycle during operation the fitting must be cut out, replaced then repressed. **No fitting should be pressed more than once. Tooling should be used as per its respective manufacturers' documented requirements.**



8. Joint Completion

The fitting should be inspected after pressing to ensure the correct press has been performed and no cracking or over deforming has occurred. The pipe insertion mark should be checked and be at the fitting edge, to ensure it has not moved. (DN65/ DN80/DN100 has a sticker on each fitting that can be removed after press and inspection to ensure conformance).



Important: Refer to page 4 section 'Leak Before Press', 'Testing with Water' and 'Testing with Air' before conducting pressure testing as per AS/NZS 3500.

ELSON LF Press Fittings FAQ

ELSON LF Press Fittings Frequently Asked Questions

Q. Do I need to lubricate the O-ring?

A. No, the O-ring is pre-lubricated. Using additional lubricants could reduce the longevity of the O-ring and void the warranty. Care should be taken during copper tube insertion to ensure the O-ring does not roll or dislodge.

Q. What grades/types of copper tube do the fittings suit?

A. Annealed (ANN), Bendable Quality (BQ) and Hard Drawn (HD) Type A and B copper tube compliant to AS1432.

Q. What pipe preparation is required?

A. Please see 'Installation Instructions' on pages 9 & 10.

Q. When using ELSON Press with older pipes, what surface preparation is required?

A. The surface should be prepared in the same way as you normally would with brand new pipe.

Q. Can the fittings be used for solar hot water installations?

A. Standard ELSON LF Press Water fittings should not be used for solar installations between the solar panel and the tank. ELSON LF Press HT (solar) fittings are recommended for applications above 95 Degrees.

Q. Can ELSON LF Press Fittings be placed in the ground?

A. Yes, but the tube and fittings must be protected when installed in any corrosive and/or acidic environments, this includes possible ground water exposure, as per regulatory requirements.

Q. Can ELSON LF Press Fittings be exposed to direct UV sunlight and heat?

A. Yes. Please refer to the Table on page 7.

Q. Can ELSON LF Press fittings be used on oil lines or compressed air installations?

A. ELSON LF Press Water fittings can be used for compressed air (oil free) installations, ELSON LF Press Water fittings can be used for compressed air (with a small oil content) and on some oil lines. Consultation with Elson on specific installation requirements is highly recommended.

Q. Can ELSON LF Press Fittings be used with medical gases?

A. No, the fittings are not recommended for use with most medical gases. Consultation with Elson on specific installation requirements is recommended.

Q. Am I able to use other tools to crimp a ELSON LF Press fitting?

A. Yes, Approved elson PRESS tools are Novopress, ACO 153, ACO 203. These approved tools must be used with elson PRESS Jaws. Other tooling with compatible jaws may be approved on application to Elson. Written approval is required from Elson before use on ELSON Press Product.

Q. Does the clipping of fittings/tube differ from a welded copper application?

A. No, the same type of clips can be used when installed in accordance with Australian standards and any other local regulatory requirements.

Q. What is the recommended space between pressed fittings?

A. Please see the 'distance between ELSON LF Press fittings' section on page 8.

Q. Can ELSON Press be installed where the mains water line won't shut off?

A. Yes, ELSON LF Press Water fittings can be used where the mains water line cannot be turned off. After pressing the ELSON LF Press fitting it will provide a watertight joint. As long as the O-ring has not been dislodged during installation under pressure or movement there will be no problems; precautions to protect the pressing tool are also highly recommended.

Q. Can ELSON LF Press fittings be dismantled and reused?

A. No, once pressed it is a permanent installation.

Q. Will I be able to rotate a ELSON LF Press fitting once installed?

A. No, once pressed, a ELSON LF Press fitting cannot be rotated.

Q. Can you braze (silver solder) near a ELSON LF Press fitting?

A. See section on 'Brazing near ELSON LF Press fittings' on page 7. It is not recommended unless distance and precautionary measures are taken to prevent damage to the sealing O-ring.

Q. What procedure should I follow to show any leaks at the end of my installation?

A. Refer to 'Testing with Water' and 'Testing with Air' on page 4 of this Technical and Installation Guide.

Q. What are some of the benefits of ELSON LF Press fittings?

A. Fast, easy and ergonomical installation. The built in ELSON Press Leak indicator design gives an indication of an unpressed joint (refer to instructions on page 4), which will help uncover possible problems with installation.



PRODUCT LISTING



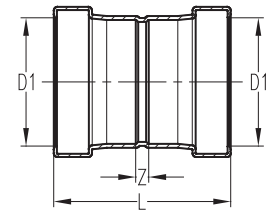
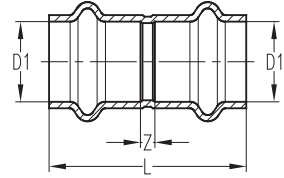
Lead Free

elson PRESS are Lead Free Watermark Certified.

ELSON LF PRESS WATER FITTINGS

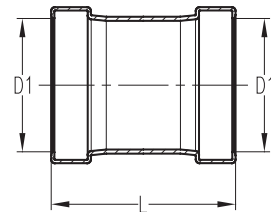
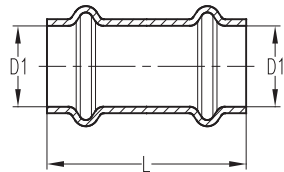
No 1 Coupling

Code	Size (D1)	L	Z
36000	DN15	41.5	4.5
36004	DN20	50.5	4.5
36006	DN25	53.5	5.5
36008	DN32	57.5	5.5
36010	DN40	71.5	5.5
36012	DN50	87.5	5.5
36014	DN65	95.0	7.0
36016	DN80	109.0	7.0
36018	DN100	129.0	7.0



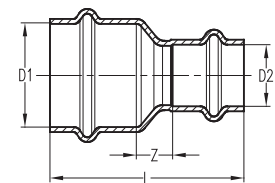
No 1S Slip Coupling

Code	Size (D1)	L
36080	DN15	41.5
36082	DN20	50.5
36084	DN25	53.5
36086	DN32	57.5
36088	DN40	71.5
36090	DN50	87.5
36092	DN65	95.0
36094	DN80	109.0
36096	DN100	129.0



No.1R Reducing Coupling

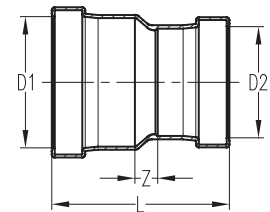
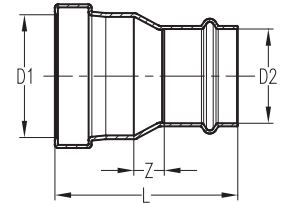
Code	Size (D1)	Size (D2)	L	Z
36024	DN20	DN15	50.5	9.0
36026	DN25	DN15	55.5	13.0
36028	DN25	DN20	56.5	9.5
36034	DN32	DN25	59.5	9.5
36038	DN40	DN25	72.5	15.5
36040	DN40	DN32	69.0	10.0



ELSON LF PRESS WATER FITTINGS

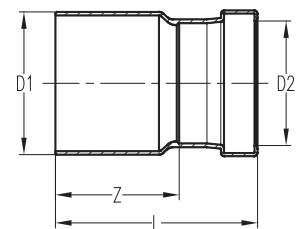
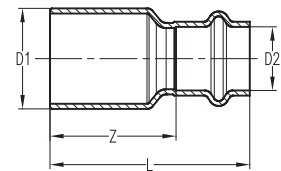
No.1R Reducing Coupling

Code	Size (D1)	Size (D2)	L	Z
36044	DN50	DN25	90.0	25.0
36046	DN50	DN32	87.0	20.0
36048	DN50	DN40	88.0	14.0
36050	DN65	DN32	101.0	31.0
36051	DN65	DN40	103.5	26.5
36052	DN65	DN50	102.0	17.0
36053	DN80	DN40	121.0	37.0
36054	DN80	DN50	119.0	27.0
36055	DN80	DN65	108.0	13.0
36056	DN100	DN50	147.5	45.5
36057	DN100	DN65	134.0	29.0
36058	DN100	DN80	136.5	24.5



M&F Reducer

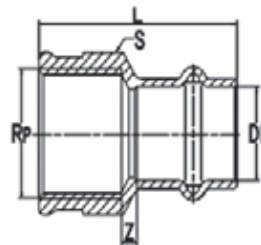
Code	Size (D1)	Size (D2)	L	Z
36060	DN20	DN15	48.5	30.0
36062	DN25	DN15	56.0	37.5
36064	DN25	DN20	55.5	32.5
36066	DN32	DN20	61.0	38.0
36068	DN32	DN25	60.5	36.5
36069	DN40	DN25	70.0	46.0
36070	DN40	DN32	69.5	43.5
36067	DN50	DN25	86.5	60.5
36071	DN50	DN32	89.0	56.0
36072	DN50	DN40	89.0	56.0
36073	DN65	DN40	103.5	70.5
36074	DN65	DN50	107.0	66.0
36075	DN80	DN50	118.5	77.5
36076	DN80	DN65	113.5	69.5
36077	DN100	DN50	149.0	108.0
36078	DN100	DN65	132.5	88.5
36079	DN100	DN80	132.5	81.5



ELSON LF PRESS WATER FITTINGS

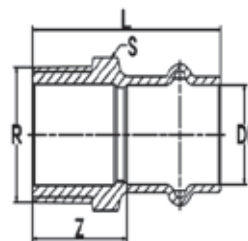
No.2 Adaptor LF DR BRASS

Code	Size (D1)	Thread	L	Z	S
LF36102	DN15	Rp 1/2"	40.5	5.0	26.0
LF36106	DN20	Rp 3/4"	45.5	5.0	31.0
LF36108	DN25	Rp 1"	48.5	6.0	37.5
LF36110	DN32	Rp 1 1/4"	57.0	7.0	47.0
LF36112	DN40	Rp 1 1/2"	62.5	7.0	53.0
LF36114	DN50	Rp 2"	75.5	9.5	70.0



No.3 Adaptor LF DR BRASS

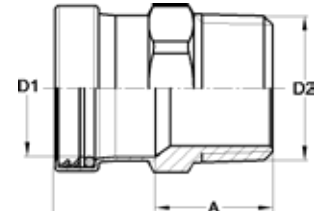
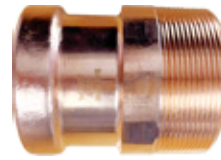
Code	Size (D1)	Thread	L	Z	S
LF36126	DN15	R 1/2"	40.9	21.0	22.0
LF36128	DN15	R 3/4"	42.9	23.0	28.0
LF36130	DN20	R 1/2"	45.5	20.6	28.0
LF36132	DN20	R 3/4"	48.0	23.0	28.0
LF36133	DN25	R 3/4"	49.6	24.7	36.0
LF36134	DN25	R 1"	52.5	27.0	36.0
LF36135	DN32	R1"	55.0	29.0	36.0
LF36136	DN32	R 1 1/4"	59.9	32.7	43.0
LF36138	DN40	R 1 1/2"	65.5	32.3	50.0
LF36140	DN50	R 2"	80.3	39.1	64.0



ELSON LF PRESS WATER FITTINGS

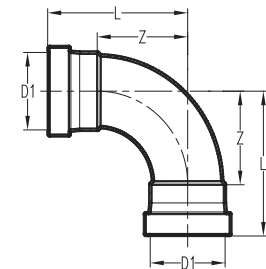
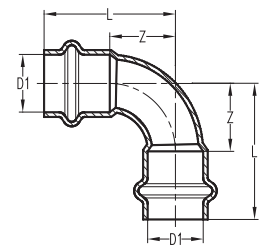
Copper R BSP No.3 MI Connector

Code	Size (D1)	D2	L	A
36622	DN65	R2 1/2"	95.5	51.5
36624	DN80	R3"	105.0	54.0
36626	DN100	R4"	122.0	61.0



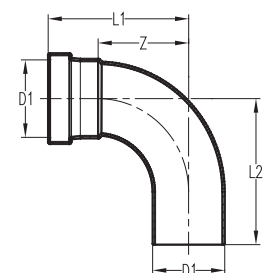
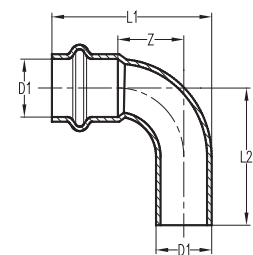
No.12 90D Elbow F&F

Code	Size (D1)	L	Z
36152	DN15	32.5	14.0
36156	DN20	44.5	21.5
36158	DN25	54.5	30.5
36160	DN32	62.0	36.0
36162	DN40	77.5	44.5
36164	DN50	100.5	59.5
36166	DN65	124.5	80.5
36168	DN80	147.0	96.0
36170	DN100	183.5	122.5



No.12 90D Elbow M&F

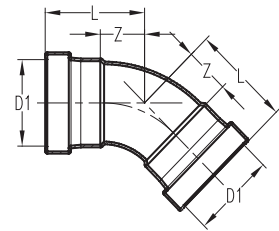
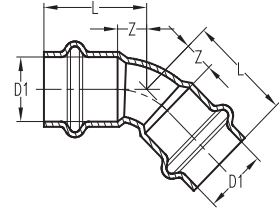
Code	Size (D1)	L1	Z	L2
36176	DN15	32.5	14.0	35.5
36178	DN20	44.5	21.5	45.0
36180	DN25	54.5	30.5	54.5
36182	DN32	62.0	36.0	62.0
36184	DN40	77.5	44.5	77.5
36186	DN50	100.5	59.5	102.0
36188	DN65	124.5	80.5	125.5
36190	DN80	147.0	96.0	152.5
36192	DN100	183.5	122.5	185.5



ELSON LF PRESS WATER FITTINGS

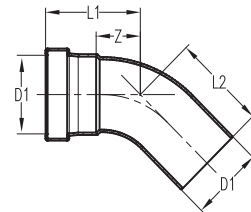
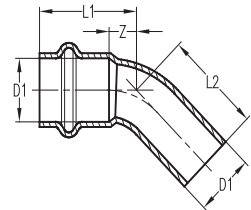
No 12 45D Elbow F&F

Code	Size (D1)	L	Z
36329	DN15	24.5	6.0
36331	DN20	32.0	9.0
36328	DN25	36.5	12.5
36330	DN32	41.0	15.0
36332	DN40	51.5	18.5
36334	DN50	64.5	23.5
36336	DN65	79.5	35.5
36338	DN80	93.0	42.0
36340	DN100	118.0	57.0



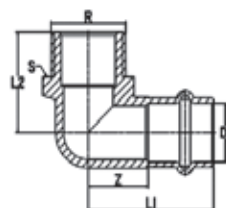
No.12 45D Elbow M&F

Code	Size (D1)	L1	Z	L2
36342	DN15	24.5	6.0	27.0
36344	DN20	32.0	9.0	34.0
36346	DN25	36.5	12.5	38.5
36348	DN32	41.0	15.0	43.0
36350	DN40	51.5	18.5	53.5
36352	DN50	64.5	23.5	67.5
36354	DN65	79.5	35.5	84.5
36356	DN80	93.0	42.0	99.0
36358	DN100	118.0	57.0	126.0



No.13 Male Elbow LF DR BRASS

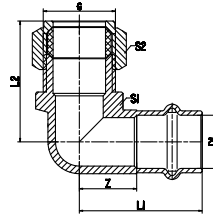
Code	Size (D1)	Thread	L1	L2	Z	S
LF36430	DN15	R 1/2"	40.0	31.0	21.0	22.0
LF36432	DN20	R 3/4"	45.0	33.4	21.0	29.0



ELSON LF PRESS WATER FITTINGS

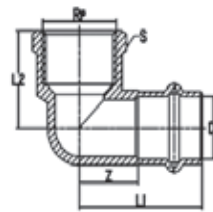
No.13 Male Elbow LF DR BRASS

Code	Size (D1)	Thread	L1	L2	Z	S1	S2
LF36434	DN20	G 3/4"	45.0	43.6	21.0	29.0	30.0



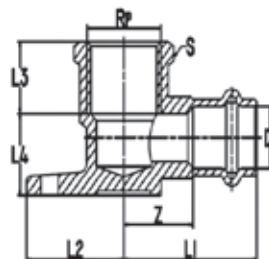
No.14 Female Elbow LF DR BRASS

Code	Size (D1)	Thread	L1	L2	Z	S
LF36444	DN20	Rp 3/4"	45.0	31.0	21.0	31.2



No.15BP Elbow LF DR BRASS

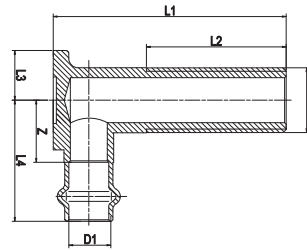
Code	Size (D1)	Thread	L1	L2	L3	L4	Z	S
LF36364	DN15	Rp 1/2"	38.5	27.5	16.2	17.0	19.5	26.0
LF36366	DN20	Rp 3/4"	48.0	27.5	17.5	24.1	24.0	32.0
LF36368	DN20	Rp 1/2"	45.0	27.6	16.2	24.0	21.0	26.0
LF36370	DN25	Rp 1"	33.0	48.0	20.6	33.9	24.0	39.1
LF36371	DN32	Rp 1"	33.0	50.0	20.6	41.9	24.0	39.1



ELSON LF PRESS WATER FITTINGS

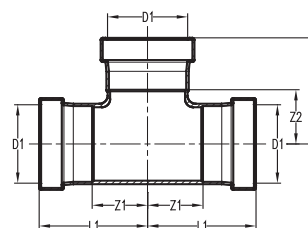
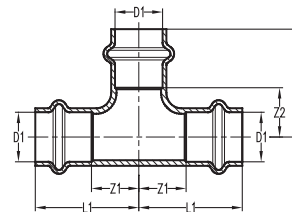
No.19BP Elbow LF DR BRASS

CODE	SIZE (D1)	THREAD	L1	L2	L3	L4	Z
LF36378	DN15	G1/2"	75.0	45.0	16.0	39.0	20.0
LF36380	DN15	G1/2"	95.0	65.0	16.0	39.0	20.0
LF36382	DN20	G3/4"	95.0	65.0	27.5	48.0	24.0



No.24 Tee Equal

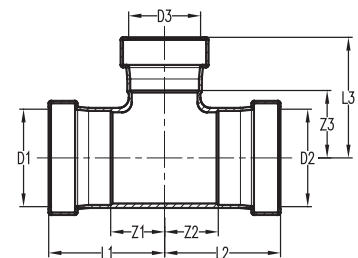
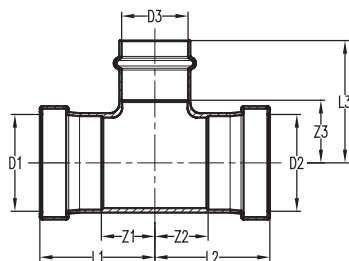
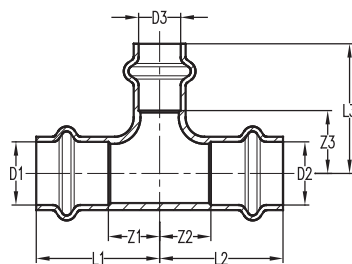
Code	Size (D1)	L1	Z1	L2	Z2
36246	DN15	34.0	15.5	29.0	10.5
36250	DN20	44.0	21.0	37.5	14.5
36252	DN25	49.0	25.0	41.5	17.5
36254	DN32	51.0	25.0	48.0	22.0
36256	DN40	60.0	27.0	60.0	27.0
36258	DN50	74.5	33.5	74.5	33.5
36260	DN65	88.0	44.0	88.0	44.0
36262	DN80	100.0	49.0	100.0	49.0
36264	DN100	126.0	65.0	119.5	58.5



ELSON LF PRESS WATER FITTINGS

No 25 Tee Red

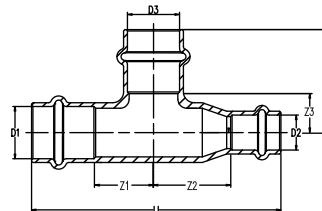
Code	Size (D1)	Size (D2)	Size (D3)	L1	Z1	L2	Z2	L3	Z3
36272	DN20	DN20	DN15	44.0	21.0	40.5	22.0	37.5	14.5
36276	DN25	DN25	DN15	41.0	17.0	41.0	17.0	36.0	17.5
36278	DN25	DN25	DN20	44.0	20.0	44.0	20.0	41.0	18.0
36280	DN32	DN32	DN15	40.5	14.5	40.5	14.5	40.0	21.5
36281	DN32	DN32	DN20	45.0	19.0	45.0	19.0	46.0	23.0
36282	DN32	DN32	DN25	48.0	22.0	48.0	22.0	46.0	22.0
36283	DN40	DN40	DN20	51.0	18.0	51.0	18.0	49.5	26.5
36284	DN40	DN40	DN25	52.0	19.0	52.0	19.0	50.5	26.5
36286	DN40	DN40	DN32	54.5	21.5	54.5	21.5	54.5	28.5
36290	DN50	DN50	DN25	60.0	19.0	60.0	19.0	58.5	34.5
36294	DN50	DN50	DN40	67.0	26.0	67.0	26.0	66.5	33.5
36296	DN65	DN65	DN50	83.5	39.5	83.5	39.5	84.5	43.5
36298	DN80	DN80	DN50	89.5	38.5	89.5	38.5	90.0	49.0
36300	DN80	DN80	DN65	92.5	41.5	92.5	41.5	96.0	52.0
36302	DN100	DN100	DN50	103.0	42.0	103.0	42.0	103.5	62.5
36304	DN100	DN100	DN65	103.5	42.5	103.5	42.5	107.5	63.5
36305	DN100	DN100	DN80	112.0	51.0	112.0	51.0	114.0	63.0



ELSON LF PRESS WATER FITTINGS

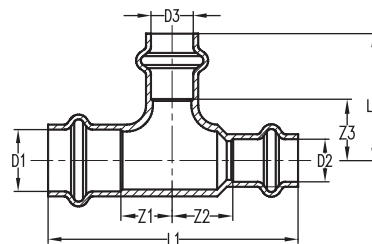
No.26 Tee Red

Code	Size (D1)	Size (D2)	Size (D3)	L1	Z1	L2	Z2	Z3
36274	DN20	DN15	DN20	84.5	20.0	32.5	21.5	13.5



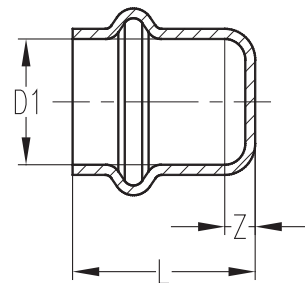
No.27 Tee Red

Code	Size (D1)	Size (D2)	Size (D3)	L1	Z1	L2	Z2	Z3
36270	DN20	DN15	DN15	81.0	17.5	32.5	22.0	13.5



No.61 End Cap

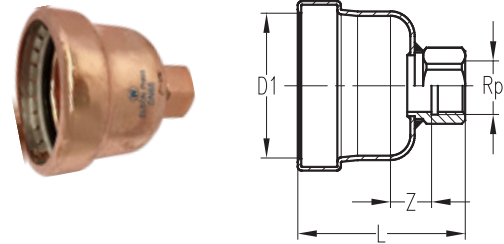
Code	Size (D1)	L	Z
36390	DN15	22.0	3.5
36392	DN20	27.5	4.5
36394	DN25	28.0	4.0
36396	DN32	30.0	4.0
36398	DN40	37.5	4.5
36400	DN50	48.0	7.0



ELSON LF PRESS WATER FITTINGS

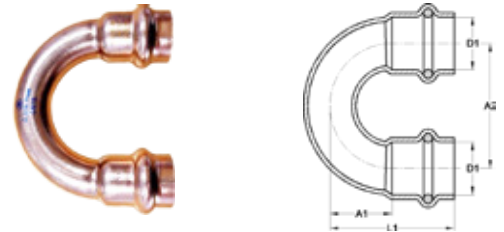
No.61 End Cap W/port

Code	Size (D1)	L	Z	Rp
36402	DN65	79.5	19.5	Rp 3/4"
36404	DN80	94.5	27.5	Rp 3/4"
36406	DN100	113.5	36.0	Rp 3/4"



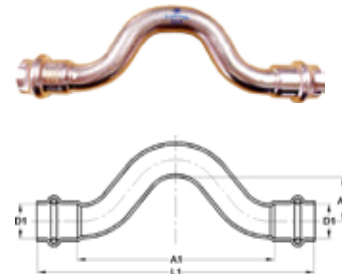
U-Bend Coupling

Code	Size (D1)	L1	A1	A2
36602	DN15	42.5	24.0	45.5
36604	DN20	46.5	23.5	45.5



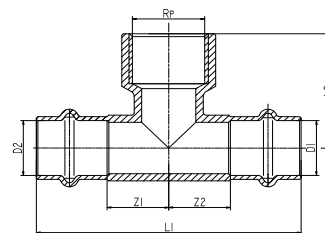
Full Crossover Coupling

Code	Size (D1)	L1	A1	A2
36612	DN15	130.0	93.0	21.0
36614	DN20	148.5	102.5	18.0



Tee LF DR BRASS

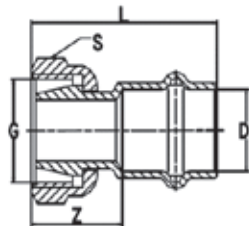
Code	Size (D1)	Size (D2)	Thread	L1	L2	Z1	Z2
LF36310	DN20	DN15	Rp1/2	79.0	35.2	17.0	14.0
LF36312	DN20	DN20	Rp3/4	88.0	40.0	20.5	20.5



ELSON LF PRESS WATER FITTINGS

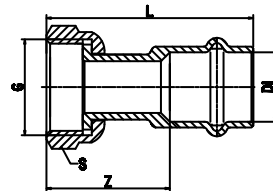
No.62 Female Connector Tapered LF DR BRASS

Code	Size (D1)	Thread	L	Z	S
LF36212	DN15	G 1/2"	48.5	22.0	26.0
LF36216	DN20	G 3/4"	59.4	22.0	31.0



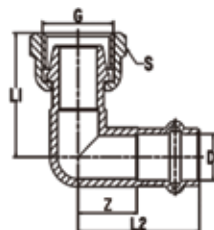
No.62 Female Connector Flat Seal LF DR BRASS

Code	Size (D1)	Thread	L	Z	S
LF36217	DN15	G 1/2"	48.5	29.4	26.0
LF36218	DN15	G 3/4"	47.0	28.0	30.0
LF36219	DN20	G 3/4"	56.5	34.5	31.0
LF36223	DN25	G1"	61.0	37.0	39.1



No.63 Female Connector Tapered LF DR BRASS

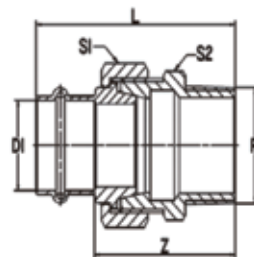
Code	Size (D1)	Thread	L1	L2	Z	S
LF36220	DN15	G 1/2"	42.0	40.0	21.0	26.0
LF36221	DN20	G1/2"	39.2	46.5	22.5	26.0
LF36222	DN20	G 3/4"	45.4	46.5	22.5	31.0



ELSON LF PRESS WATER FITTINGS

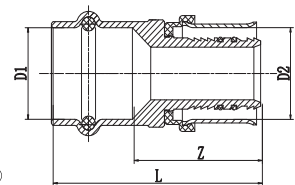
No.69 Male Union LF DR BRASS

Code	Size (D1)	Thread	L	Z	S1	S2
LF36224	DN15	R 1/2"	58.5	38.0	30.0	27.0
LF36226	DN20	R 3/4"	67.0	42.0	38.0	34.0
LF36228	DN25	R 1"	74.5	49.0	47.0	43.5
LF36230	DN32	R 1 1/4"	81.5	55.0	54.0	49.5
LF36232	DN40	R1 1/2"	91.5	59.0	67.0	61.0
LF36234	DN50	R 2"	106.5	66.0	77.5	70.0



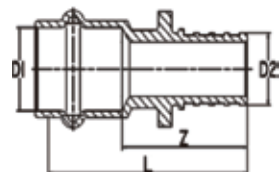
Adaptor elson LF PRESS x BUSHPEX Crimp-On LF DR BRASS

CODE	Size (D1)	Size (D2)	L	Z
LF39880	DN15	16mm	54.0	31.5
LF39882	DN20	20mm	62.0	31.0
LF39884	DN20	25mm	62.0	31.0



Adaptor elson LF PRESS x BUSHPEX Pull-On LF DR BRASS

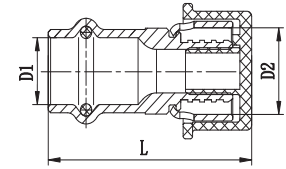
CODE	Size (D1)	Size (D2)	L	Z
LF23880	DN15	16mm	47.0	28.0
LF23882	DN20	20mm	60.5	36.5
LF23884	DN20	25mm	66.0	42.0



ELSON LF PRESS WATER FITTINGS

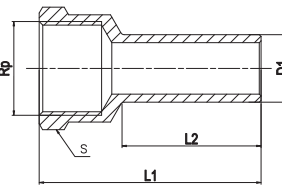
Adaptor Water elson LF PRESS x EPS LF Crimp LF DR BRASS

CODE	Size (D1)	Size (D2)	L
LF21880	DN15	16mm	43.0
LF21882	DN20	20mm	51.0
LF21884	DN20	20mm	53.7
LF21892	DN25	25mm	62.0



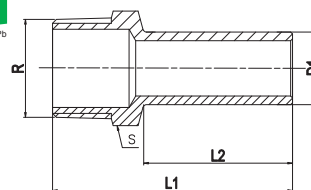
Press & Capillary Plug In Adaptor FI Water LF DR BRASS

CODE	Size (D1)	THREAD	L1	L2	S
LF36450	DN15	Rp1/2	55.5	34.0	25.8
LF36452	DN20	Rp1/2	58.6	39.0	25.8
LF36454	DN20	Rp3/4	62.2	39.0	31.2



Press & Capillary Plug In Adaptor MI Water LF DR BRASS

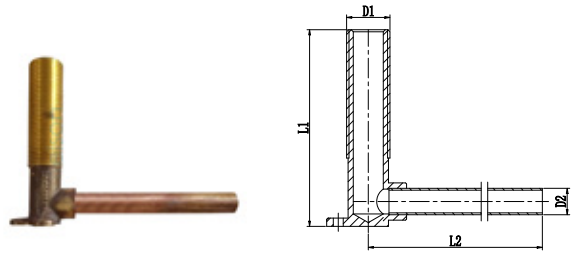
CODE	Size (D1)	THREAD	L1	L2	S
LF36460	DN15	Rp1/2	55.6	34.0	22.0
LF36462	DN20	Rp1/2	59.8	39.0	22.0
LF36464	DN20	Rp3/4	62.9	39.0	27.5



ELSON LF PRESS WATER FITTINGS

Adapt 1/2 MI NO 19BP EXT With 100mm x DN15 CU Tail

Code	Size (D1)	Size (D2)	L1	L2
69024	G1/2B	DN15	95	118.5



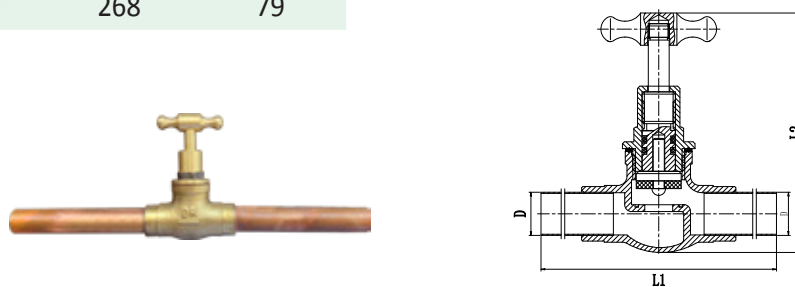
Adapt PEX CRIMP BARB 16mm With 100mm x DN15 CU Tail

Code	Size (D1)	Size (D2)	L1	L2
69080	DN16	DN15	140.5	100



Adapt 3/4 OD S/Cock With 100mm x DN20 CU Tails

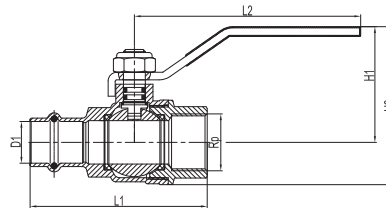
Code	Size (D1)	L1	L2
69152	DN20	268	79



ELSON LF PRESS WATER BALL VALVES

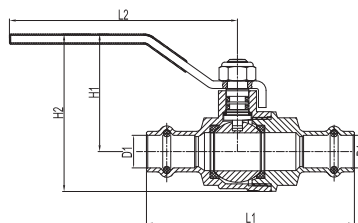
elson LF PRESS Water Ball Valve LF DR BRASS Lever Handle

Code	Size (D1)	Thread	L1	L2	H1	H2
LF73660	DN15	Rp 1/2"	65.4	90	47.0	62.6
LF73662	DN20	Rp 3/4"	82.2	103.5	53.3	72.8



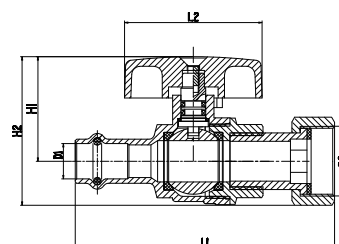
elson LF PRESS Water Ball Valve LF DR BRASS Lever Handle

Code	Size (D1)	L1	L2	H1	H2
LF73680	DN15	82.0	90.0	47.0	62.6
LF73682	DN20	101.0	103.5	53.3	72.8
LF73684	DN25	112.0	103.5	57.2	80.9
LF73686	DN32	128.5	135.0	65.6	94.7
LF73688	DN40	151.0	135.0	72.4	108.0
LF73690	DN50	174.0	165.0	90.0	133.0



elson LF PRESS Water Ball Valve LF DR BRASS Tee Handle Loose Nut

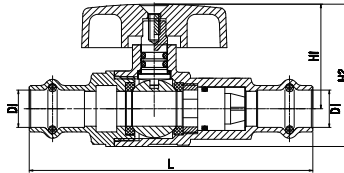
Code	Size (D1)	Thread	L1	L2	H1	H2
LF73672	DN15	G 3/4"	94.2	50.0	38.0	54.0



ELSON LF PRESS WATER BALL VALVES

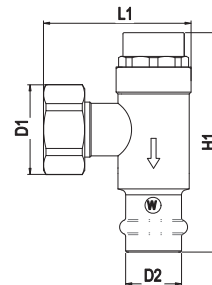
elson LF NON-Return Isolating Valve Press LF DR BRASS

Code	Size (D1)	L	H1	H2
LF76030	DN15	98.0	36.0	49.0



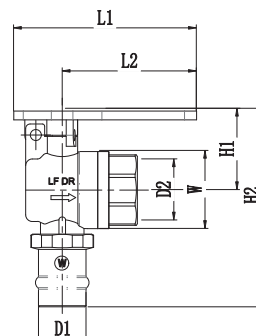
elson LF PRV Boundary R/A Press LF DR BRASS Loose Nut

Code	Size(D1)	Size(D2)	L1	H1
LF76009	G3/4	DN20	61.4	89.3



elson LF Meter B/V R/A L/ABLE LF DR BRASS Press Inlet

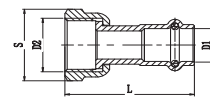
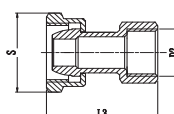
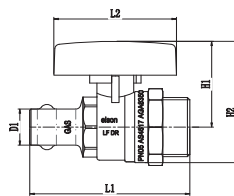
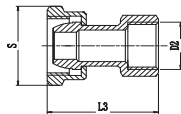
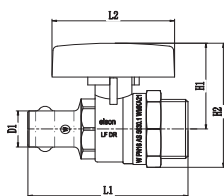
Code	Size(D1)	Size(D2)	L1	L2	H1	H2	W
LF74139	DN20	Rp3/4	82	60	35.5	88.5	34.5



ELSON LF PRESS WATER BALL VALVES

elson LF PRESS B/V Kit GAS INST. W/Heater L/Nut

Code	PART (1) PRESS WATER BALL VALVE		PART (2) PRESS GAS BALL VALVE		PART (3) PRESS WATER NO.62 FI CONNECTOR	
	Size(D1)	Size(D2)	Size(D1)	Size(D2)	Size(D1)	Size(D2)
LF73720	DN15	G1/2	DN15	G1/2	DN15	G1/2
LF73722	DN20	G3/4	DN20	G3/4	DN20	G3/4
LF73723	DN15	G3/4	DN20	G3/4	DN15	G3/4
LF73724	DN15	G1/2	DN20	G3/4	DN15	G1/2
LF73725	DN15	G1/2	DN15	G3/4	DN15	G1/2
LF73721	DN15	G3/4	DN15	G3/4	DN15	G3/4



PART (1)	L1	L2	L3	H1	H2	S
LF73720	73	50	45	38	54	35
LF73722	81	50	45	47	60	35
LF73723	73	50	45	38	54	35
LF73724	73	50	45	38	54	35
LF73725	73	50	45	38	54	35
LF73721	73	50	45	38	54	35

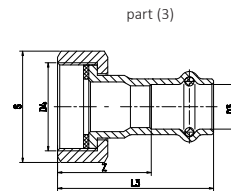
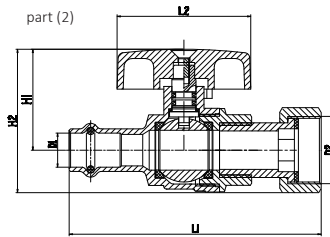
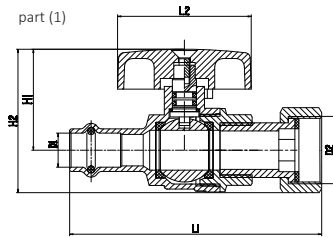
PART (2)	L1	L2	L3	H1	H2	S
LF73720	73	50	45	38	54	35
LF73722	81	50	45	47	60	40
LF73723	81	50	45	47	60	40
LF73724	81	50	45	47	60	40
LF73725	73	50	45	38	54	35
LF73721	73	50	45	38	54	35

PART (3)	L	S
LF73720	48	29.5
LF73722	57.5	35
LF73723	48	35
LF73724	48	29.5
LF73725	48	29.5
LF73721	48	35

ELSON LF PRESS WATER BALL VALVES

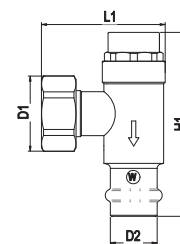
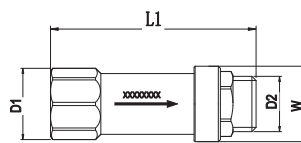
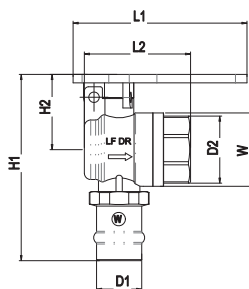
elson LF PRESS B/V Kit GAS INST. W/Heater L/Nut

Code	Size (D1)	Size (D2)	L1	L2	H1	H2	Size (D3)	Size (D4)	L3	Z	S
LF73693	DN15	G 3/4"	94.2	50.0	38.0	54.0	DN15	G 3/4"	47.0	28.0	30.0



elson LF Meter CONN. KIT L/ABLE W/ L/N PRV R/A LF DR PRESS Inlet

Code	PART (1)		PART (2)		PART (3)	
	Size(D1)	Size(D2)	Size(D1)	Size(D2)	Size(D1)	Size(D2)
LF74206	DN20	Rp3/4	Rp3/4	G3/4B	G3/4	20Cn



PART (1)	L1	L2	L3	H1	H2
	82	60	35.5	89	φ34.5

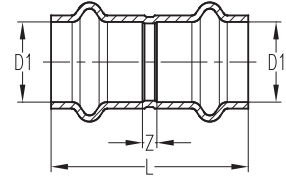
PART (2)	L1	W
	100	φ36

PART (3)	L1	W
	61.4	89.3

ELSON LF PRESS HT (SOLAR)

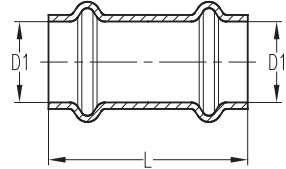
No 1 Coupling

Code	Size (D1)	L	Z
36488	DN15	41.5	4.5
36490	DN20	50.5	4.5



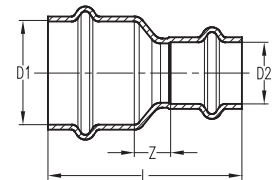
No 1S Slip Coupling

Code	Size (D1)	L
36494	DN15	41.5
36496	DN20	50.5



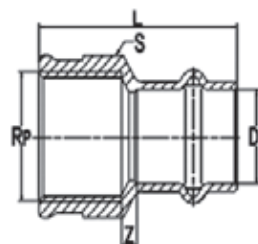
No 1R Red Coupling

Code	Size (D1)	Size (D2)	L	Z
36504	DN20	DN15	50.5	9.0



No 2 Female Coupling LF DR BRASS

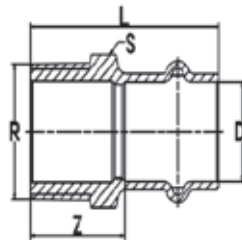
Code	Size (D1)	Thread	L	Z	S
LF36520	DN15	Rp 1/2"	40.5	5.0	26.0
LF36522	DN20	Rp 3/4"	45.5	5.0	31.0



ELSON LF PRESS HT (SOLAR)

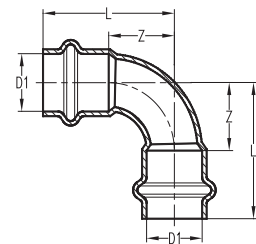
No.3 Male Coupling LF DR BRASS

Code	Size (D1)	Thread	L	Z	S
LF36536	DN15	R 1/2"	40.9	21.0	22.0
LF36538	DN20	R 3/4"	48.0	23.0	28.0



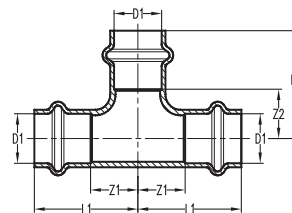
No.12 90D Elbow F&F

Code	Size (D1)	L	Z
36552	DN15	32.5	14.0
36554	DN20	44.5	21.5



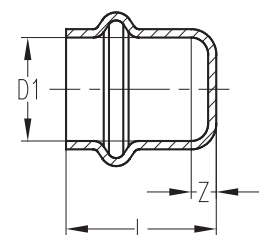
No.24 Tee Equal

Code	Size (D1)	L1	Z1	L2	Z2
36568	DN15	34.0	15.5	29.0	10.5
36570	DN20	44.0	21.0	37.5	14.5



No.61 End Cap

Code	Size (D1)	L	Z
36390	DN15	22.0	3.5
36392	DN20	27.5	4.5



ELSON LF PRESS TOOLS

Novopress ACO153 Bluetooth Press Tool Kit With DN15-DN32 CU Press Jaws, 2 Batteries & 1 Charger

Code	Size (D1)
36900	DN15-DN32



Novopress ACO153 Bluetooth Press Tool Kit With 2 Batteries & 1 Charger, Less Jaw

Code
36901



Novopress ACO153 Bluetooth Press Tool Skin (No Battery)

Code
36902



elson PRESS Jaw Novopress ACO153 Press Tool

Code	Size (D1)
36810	DN15
36812	DN20
36814	DN25
36816	DN32



Novopress PIVOT.Rings & Adaptor Kit, DN15-DN32 Rings & Adaptor SZB151, SUIT ACO153

Code	Size (D1)
36910	DN15-DN32



ELSON LF PRESS TOOLS

Novopress Pivoting Ring Suit ACO153

Code	Size (D1)
36916	DN15
36917	DN20
36918	DN25
36919	DN32



Novopress Adaptor Pivoting Ring DN15-DN32 SZB151 Suit ACO153

Code
36915



Charger ACO153 Press Tool

Code
23866



Battery ACO153 Press Tool

Code
23864



Novopress Case Only Suit ACO-153 Tool

Code
36909



ELSON LF PRESS TOOLS

Novopress ACO203 Bluetooth Press Tool Kit With DN15-DN32 CU Press Jaws, 2 Batteries & 1 Charger

Code	Size (D1)
36905	DN15-DN32



Novopress ACO203 Bluetooth Press Tool Kit With 2 Batteries & 1 Charger, Less Jaw

Code
36903



Novopress ACO203 Bluetooth Press Tool Skin (No Battery)

Code
36907



Novopress CU Press Jaw Set PB2-AV40-50 Suit Copper DN40-DN50 For ACO203 & ACO203 BT Press Tool

Code	Size (D1)
36906	DN40-DN50



Novopress CU Press Jaw Set W/ZB203 Jaw Adaptor Suit Copper DN65-DN100 For ACO203 BT Press Tool

Code	Size (D1)
36804	DN65-DN100



ELSON LF PRESS TOOLS

elson PRESS Jaw Novopress ACO203 BT Press Tool

Code	Size (D1)
36820	DN15
36822	DN20
36824	DN25
36826	DN32
36825	DN40
36830	DN65
36832	DN80
36834	DN100



Novopress Adaptor Suit ACO203 BT DN65 to DN100 Jaw

Code
36839



Novopress Pivoting Ring Suit ACO203

Code	Size (D1)
36936	DN15
36937	DN20



Novopress Adaptor Pivoting Ring DN40-DN50 SZB202 Suit ACO203

Code
36935



ELSON LF PRESS TOOLS

Charger Novopress ACO203 BT Press Tool

Code

36927

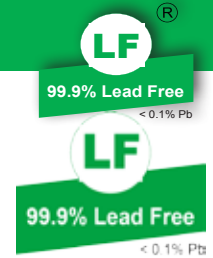


Battery Novopress ACO203 BT Press Tool

Code

36928





LEAD FREE* Plumbing Solutions



**CERTIFICATE
OF CONFORMITY**

SAI Global hereby grants:

Elson Australasia Pty Ltd

38 Eddie Road, Minchinbury, NSW 2770, Australia

Watermark Certificate of Conformity

Evaluated to:

AS 3688:2016 - Water supply and gas systems - Metallic fittings and end connectors

"the WaterMark Licensee" the right to use or arrange the use of the WATERMARK as shown below only in respect of the goods described and detailed on the product schedule identified on www.saiglobal.com which are produced by the WaterMark Licensee or on behalf of the WaterMark Licensee* and which comply with the appropriate Standard referred to above as from time to time amended. The Licence is granted subject to the rules governing the use of the WATERMARK and the Terms and Conditions for certification. The WaterMark Licensee covenants to comply with all the Rules and Terms and Conditions.

This Certificate is issued by a JAS-ANZ accredited certification body. The Scheme Owner, Administering Body and Accreditation Body do not in any way warrant, guarantee or represent that the product the subject of this Certificate conforms to the WaterMark Certification Scheme Rules, nor accepts any liability arising out of the use of the product. The Scheme Owner disclaims to the extent permitted by law, all liability (including negligence) for claims of losses, expenses, damages and costs arising as a result of the use of the product(s) referred to in this Certificate.

Certificate No:WMK26127

Issued: 6 August 2021

Originally Certified: 25 July 2016

Expires: 24 July 2026

Current Certification: 5 August 2021

Frank Camasta
Global Head of Technical Services
SAI Global Assurance



* For details of manufacture, refer to the licensee

The WaterMark is a registered certification trademark of Australian Building Codes Board ABN 74 599 608 295 and is issued under licence by SAI Global Certification Services Pty Limited (ACN 108 716 689) ("SAI Global") 650 Lorimer Street, Port Melbourne VIC 3207, GPO Box 5420 Sydney NSW 2001. This certificate may only be reproduced in its entirety and remains the property of SAI Global and must be returned to SAI Global upon its request. Refer to www.saiglobal.com for the list of product models.





Elson Australasia Pty Ltd ABN 45 059 613 991
38 Eddie Road, Minchinbury,
New South Wales 2770
Australia

P.O.Box 3217
Mount Druitt Village NSW 2770
Tel: 1300 169 026
Email: sales@elson.net.au
Web: www.epspex.au www.elson.au

Sydney Distribution Centre

Tel: 1300 169 026
38 Eddie Road, Minchinbury,
New South Wales 2770
Australia

Melbourne Distribution Centre

Tel: 1300 169 026
92 Fox Drive, Dandenong South,
Victoria 3175
Australia

Sales and service:

ACT | NSW | NT | QLD | SA | TAS | VIC | WA

Distributed by



Disclaimer: All care has been taken to ensure the information provided in this brochure is accurate and reliable but it must be treated as being of a general nature only. Products in the brochure may change as ELSON is committed to continuous product improvement. Elson provides no guarantee nor accepts responsibility for information contained in the brochure.