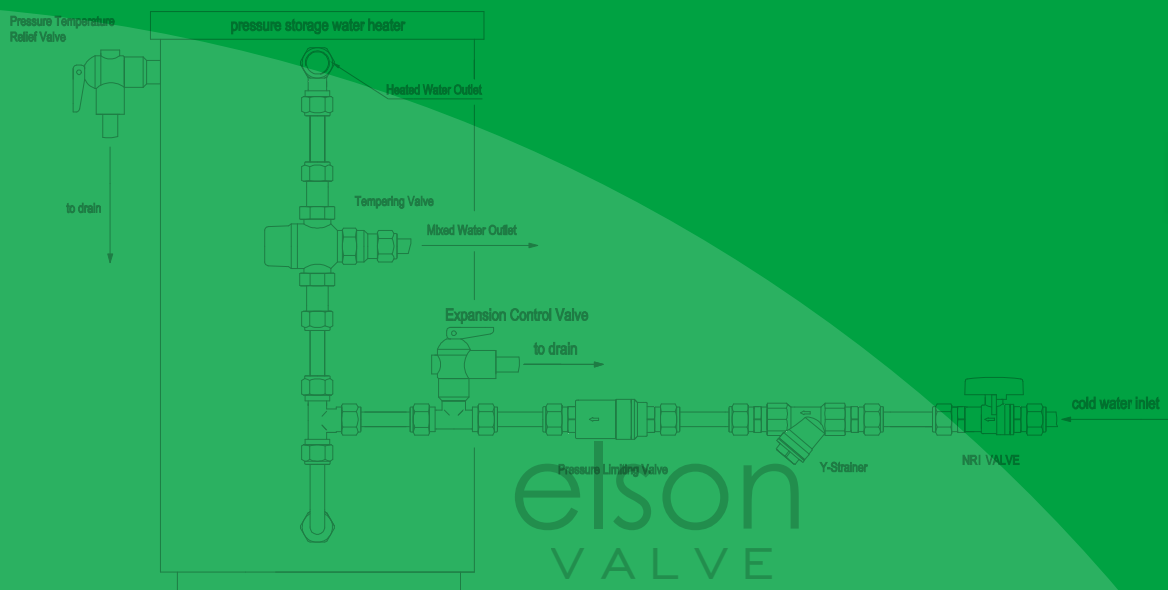


elson

LEAD FREE Plumbing Solutions

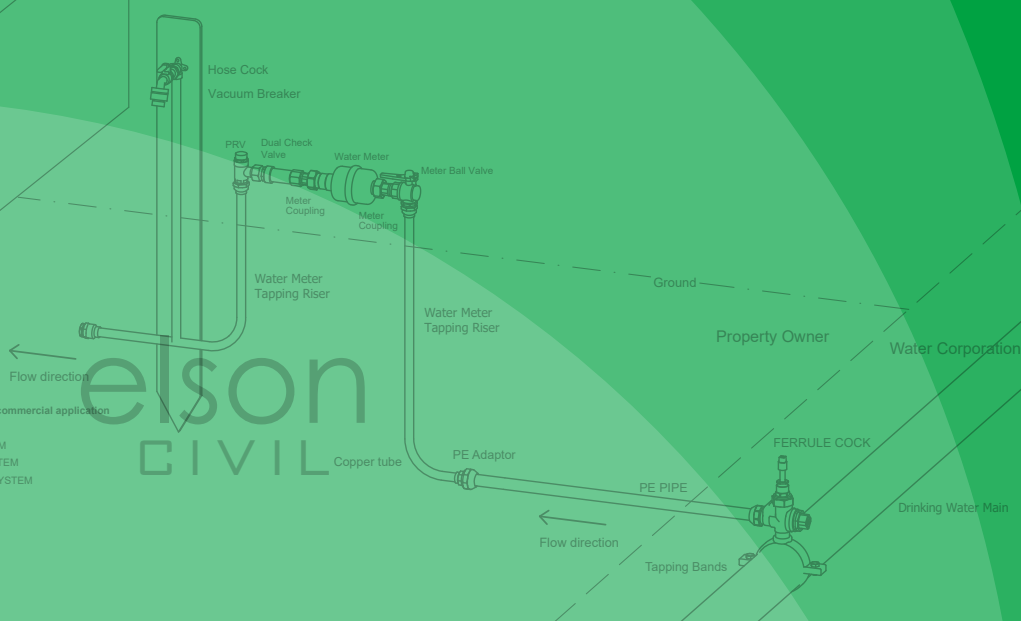


LF

99.9% Lead Free

< 0.1% Pb

99.9% Lead Free CATALOGUE Version 5.3



Elson Plumbing Systems suitable for domestic and commercial application

- * elson BUSHPEX PULL-ON PEX PLUMBING SYSTEM
- * elson BUSHPEX CRIMP-ON PEX PLUMBING SYSTEM
- * elson EPS LEAD FREE CRIMP PEX PLUMBING SYSTEM
- * elson EPS LEAD FREE PUSH-FIT PEX PLUMBING SYSTEM
- * elson LEAD FREE PRESS PLUMBING SYSTEM

LF

99.9% Lead Free

< 0.1% Pb

Elson is the leading manufacturer providing
LEAD FREE Plumbing Solutions



CONTENTS

COMPANY OVERVIEW 4

CERTIFICATE OF CONFORMITY 5

elson
CIVIL



elson LF CIVIL METER BALL VALVE	6
elson LF PRESSURE REDUCTION BOUNDARY VALVES	11
elson LF PRV BOUNDARY R/A ADJUSTABLE	14
elson LF CIVIL METER CONNECTION KITS	15
elson LF WATER METER RISERS	18



elson
CIVIL

RECYCLED WATER



elson LF RECYCLED WATER METER RISERS	19
elson LF RECYCLED WATER CIVIL BALL VALVES	20

elson
VALVE



elson LF PRESS BALL VALVES	25
elson LF BUSHPEX BALL VALVES	27
elson LF DUAL CHECK VALVE	29
elson LF PRESSURE LIMITING VALVES	31
elson LF PRV ADJUSTABLE	32
elson LF NON-RETURN ISOLATING VALVES	33
elson LF NON-RETURN VALVES	35



elson innovative UBV - Continuous flow instantaneous water heater connections

- elson LF PRESS UNION BALL VALVE KITS	37
- elson LF FLARED UNION BALL VALVE KITS	39



CERTIFICATE OF CONFORMITY 41

COMPANY OVERVIEW

Elson is an Australian owned and operated company since 1993 with our head office and national distribution centre based in Minchinbury NSW. Elson plumbing products are designed specifically for the Australian market. We have been manufacturing quality plumbing and brassware products since 1999 in our own ISO 9001 certified factory QEC27227. Elson set a higher quality benchmark by introducing 99.9% Lead Free copper alloy plumbing products in 2016 with the launch of elson LEAD FREE PRESS fittings and we have continued to expand our Lead Free range to include Water Meter Ball Valves, PRV Boundary Valves, Hot Water Valves – PRVs, PLVs & Non-Return Isolating Valves, Press Ball Valves, Dual Check Valves, BUSHPEX Ball Valves, elson innovative Union Ball Valves, and Elson EPS LEAD FREE* CRIMP WATER & GAS DUAL PEX Plumbing System, EPS LEAD FREE * PUSH-FIT PEX Plumbing System. Elson has established a reputation for quality without compromise. We continue to develop our product ranges with innovative quality plumbing products.

Quality without Compromise

Elson control quality from the raw material through the manufacturing process to the finished products. This ensures every elson product is of consistent and of the highest quality and meets our strict standards.

LEAD FREE - 99.9% Pb free



Elson is the leading manufacturer providing LEAD FREE Plumbing Solutions.

Our journey as being the leading manufacturer of 99.9% lead free plumbing products began in 2016 well before the initiative by ABCB to implement the reduction of lead in Australian plumbing copper alloy products for drinking water to 0.25% by weight. Our Lead Free copper alloy products contain a maximum of 0.1% lead by weight setting a higher benchmark than the new standard requirements to be mandatory on the 1st September 2025.

"Clause A5G4 of NCC 2022 Volume Three (Plumbing Code of Australia) will specify that all copper alloy plumbing products in contact with drinking water must limit the allowable lead content of copper alloy plumbing products in contact with drinking water to a weighted average lead content of not more than 0.25%".

Benefits: SAFE CLEAN HEALTHY DRINKING WATER

- Contribute to provide clean healthy drinking water in contact with lead free copper alloy products.
- AS 4020 compliance - Materials in contact with drinking water.
- Compliance to European lead free copper alloy guideline limit under 0.1% lead by weight.



Caring for our ENVIRONMENT

- Elson lead free copper alloy products offer an environmentally friendly advantage while still maintaining the proven product quality you expect from Elson.
- Lead free copper alloy can be recycled maintaining the environmental benefits.



CERTIFICATE OF CONFORMITY



WaterMark

WMKA02497
Standard AS 3688

CERTIFIED FOR
elson LF BRASS PLUMBING FITTINGS



**Australian
Standard**

Certificate No. SMK 26244
Standard AS 4796

CERTIFIED FOR
elson LF CIVIL METER BALL VALVES



WaterMark

WMKA21655
Standard AS/NZS 2845.1

CERTIFIED FOR
elson LF DUAL CHECK VALVES



WaterMark

WMKA 21922
Standard AS 5830.1

CERTIFIED FOR
elson LF WATER BALL VALVES



**Australian
Standard**

Certificate No. SMK 02497
Standard AS 3688

CERTIFIED FOR
elson LF BRASS PLUMBING FITTINGS
FOR GAS USE



WaterMark

WMK26481
Standard AS 1357.1/2

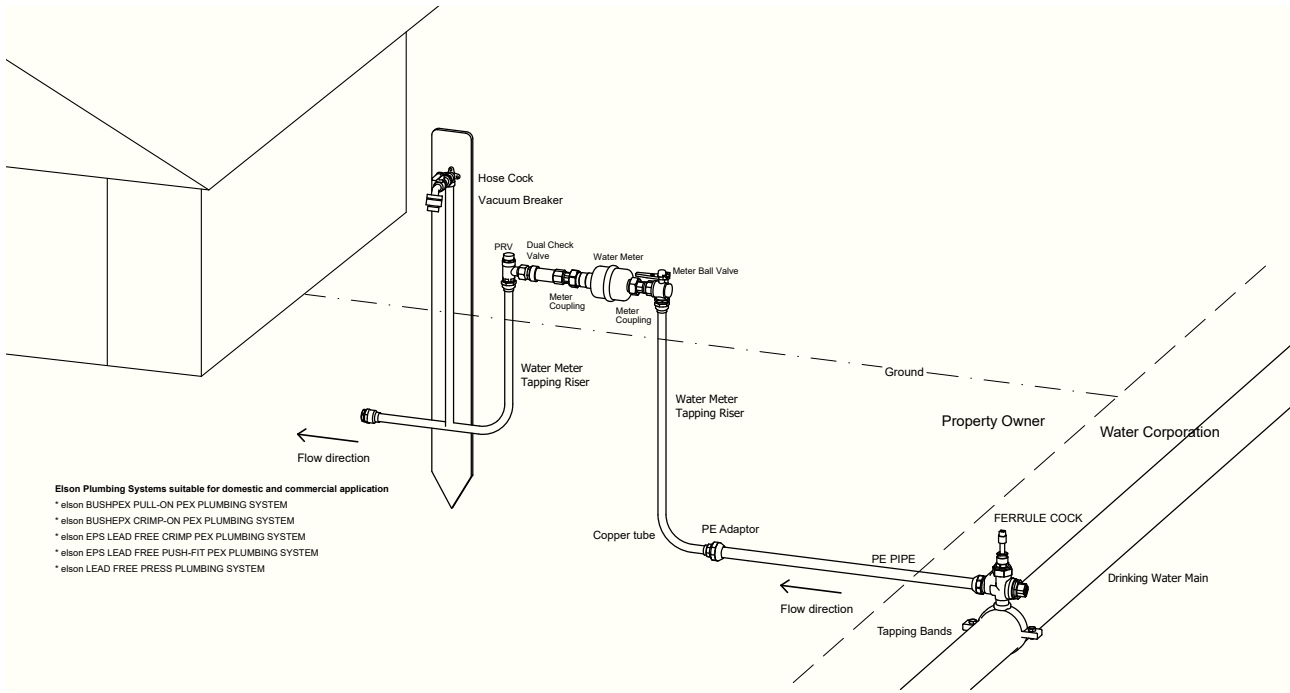
WMK 26481 AS 1357.2 CERTIFIED FOR
elson LF PRESSURE REDUCTION VALVES
WMK 26481 AS 1357.1/2 CERTIFIED FOR
elson LF NON-RETURN ISOLATING VALVES



AGA 8350
AS 4617

CERTIFIED FOR
elson LF GAS BALL VALVES

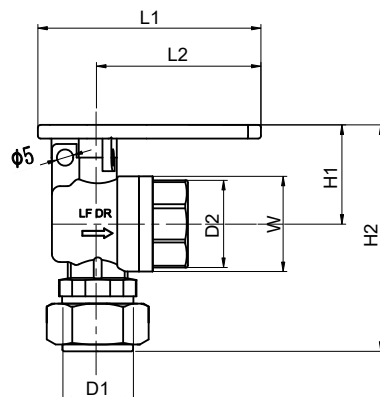




STANDARD METER BALL VALVE RIGHT ANGLE LOCKABLE

elson LFMETER BALL VALVE R/A L/ABLE LF DR BRASS Rp3/4 FI x 20Cn C/O INLET

CODE	Size(D1)	Size(D2)	L1	L2	H1	H2	W	FINISH	UOM	PACK QTY	CTN QTY
LF74135	20Cn	Rp3/4	82	60	35.5	86	34.5	LF DR BRASS	EA	1	50



Application

Elson Right Angle LOCKABLE METER Ball Valve is a flow control fitting, suit to capable of regulating and shutting off the flow in a water main or property service pipe.

Features & Benefits

- 99.9% LEAD FREE* DR BRASS
- Pressure tested
- Full bore ball valve
- Lockable handle can be locked opened or closed
- Arrow indicating flow direction
- Standardsmark Certificate Number: SMKP26244 in compliance with 4796
- Watermark Certificate Number: WMKA21922 in compliance with AS5830.1
- Suitable for Potable Water – complies with AS/NZS 4020
- Dezincification Resistant (DR) Brass complies with AS 2345
- WSAA Appraised ball valves

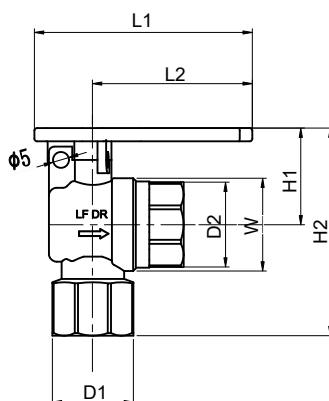
Technical Specifications

- Working Temperature Range: 1°C to 95°C
- Maximum Allowable Operating Pressure (MAOP) : 2500kPa

STANDARD METER BALL VALVE RIGHT ANGLE LOCKABLE

elson LFMETER BALL VALVE R/A LF DR BRASS Rp3/4 x Rp3/4 LOCKABLE

CODE	Size(D1)	Size(D2)	L1	L2	H1	H2	W	FINISH	UOM	PACK QTY	CTN QTY
LF74136	Rp3/4	Rp3/4	82	60	35.5	77	34.5	LF DR BRASS	EA	1	50



Application

Elson Right Angle LOCKABLE METER Ball Valve is a flow control fitting, suit to capable of regulating and shutting off the flow in a water main or property service pipe.

Features & Benefits

- 99.9% LEAD FREE* DR BRASS
- Pressure tested
- Full bore ball valve
- Lockable handle can be locked opened or closed
- Arrow indicating flow direction
- Standardsmark Certificate Number: SMKP26244 in compliance with 4796
- Watermark Certificate Number: WMKA21922 in compliance with AS5830.1
- Suitable for Potable Water – complies with AS/NZS 4020
- Dezincification Resistant (DR) Brass complies with AS 2345
- WSAA Appraised ball valves

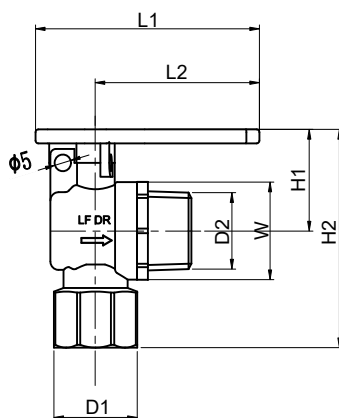
Technical Specifications

- Working Temperature Range: 1°C to 95°C
- Maximum Allowable Operating Pressure (MAOP) : 2500kPa

STANDARD METER BALL VALVE RIGHT ANGLE LOCKABLE

elson LF METER BALL VALVE R/A LOCKABLE LF DR BRASS R3/4 MI x Rp3/4 FI INLET

CODE	Size(D1)	Size(D2)	L1	L2	H1	H2	W	FINISH	UOM	PACK QTY	CTN QTY
LF74137	Rp3/4	R3/4	82	60	35.5	77	34.5	LF DR BRASS	EA	1	50



Application

Elson Right Angle LOCKABLE METER Ball Valve is a flow control fitting, suit to capable of regulating and shutting off the flow in a water main or property service pipe.

Features & Benefits

- 99.9% LEAD FREE* DR BRASS
- Pressure tested
- Full bore ball valve
- Lockable handle can be locked opened or closed
- Arrow indicating flow direction
- Standardsmark Certificate Number: SMKP26244 in compliance with 4796
- Watermark Certificate Number: WMKA21922 in compliance with AS5830.1
- Suitable for Potable Water – complies with AS/NZS 4020
- Dezincification Resistant (DR) Brass complies with AS 2345
- WSAA Appraised ball valves

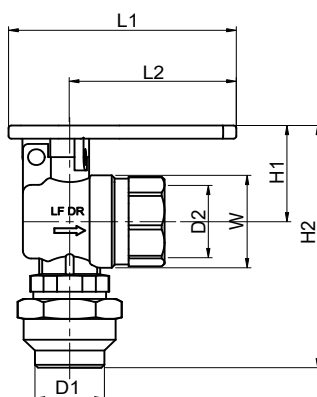
Technical Specifications

- Working Temperature Range: 1°C to 95°C
- Maximum Allowable Operating Pressure (MAOP) : 2500kPa

STANDARD METER BALL VALVE RIGHT ANGLE LOCKABLE

elson LF METER BALL VALVE R/A L/ABLE LF DR BRASS Rp3/4 FI x 20Cn FLARED INLET

CODE	Size(D1)	Size(D2)	L1	L2	H1	H2	W	FINISH	UOM	PACK QTY	CTN QTY
LF74138	20Cn	Rp3/4	82	60	35.5	89	34.5	LF DR BRASS	EA	1	40



Application

Elson Right Angle LOCKABLE METER Ball Valve is a flow control fitting, suit to capable of regulating and shutting off the flow in a water main or property service pipe.

Features & Benefits

- 99.9% LEAD FREE* DR BRASS
- Pressure tested
- Full bore ball valve
- Lockable handle can be locked opened or closed
- Arrow indicating flow direction
- Standardsmark Certificate Number: SMKP26244 in compliance with 4796
- Watermark Certificate Number: WMKA21922 in compliance with AS5830.1
- Suitable for Potable Water – complies with AS/NZS 4020
- Dezincification Resistant (DR) Brass complies with AS 2345
- WSAA Appraised ball valves

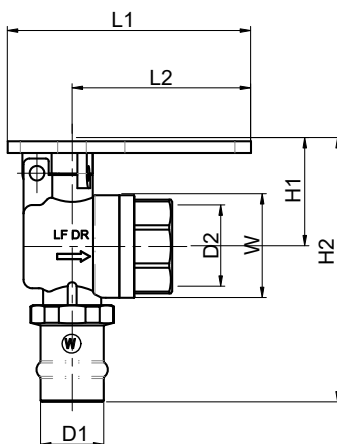
Technical Specifications

- Working Temperature Range: 1°C to 95°C
- Maximum Allowable Operating Pressure (MAOP) : 2500kPa

STANDARD METER BALL VALVE RIGHT ANGLE LOCKABLE

elson LF METER BALL VALVE R/A L/ABLE LF DR BRASS Rp3/4 FI x DN20 PRESS INLET

CODE	Size(D1)	Size(D2)	L1	L2	H1	H2	W	FINISH	UOM	PACK QTY	CTN QTY
LF74139	DN20	Rp3/4	82	60	35.5	88.5	34.5	LF DR BRASS	EA	1	40



Application

Elson Right Angle LOCKABLE METER Ball Valve is a flow control fitting, suit to capable of regulating and shutting off the flow in a water main or property service pipe.

Features & Benefits

- 99.9% LEAD FREE* DR BRASS
- Pressure tested
- Full bore ball valve
- Lockable handle can be locked opened or closed
- Arrow indicating flow direction
- Standardsmark Certificate Number: SMKP26244 in compliance with 4796
- Watermark Certificate Number: WMKA21922 in compliance with AS5830.1
- Suitable for Potable Water – complies with AS/NZS 4020
- Dezincification Resistant (DR) Brass complies with AS 2345
- WSAA Appraised ball valves

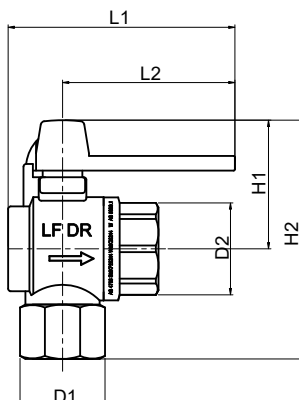
Technical Specifications

- Working Temperature Range: 1°C to 95°C
- Maximum Allowable Operating Pressure (MAOP) : 1600kPa

74S METER BALL VALVE RIGHT ANGLE LOCKABLE

elson LF METER BALL VALVE R/A L/ABLE LF DR BRASS Rp3/4 FI x Rp3/4 FI INLET

CODE	Size(D1)	Size(D2)	L1	L2	H1	H2	W	FINISH	UOM	PACK QTY	CTN QTY
LF74105	Rp3/4	Rp3/4	85	65	46.5	87.5	39	LF DR BRASS	EA	1	40



Features & Benefits

- 99.9% LEAD FREE* DR BRASS
- Pressure tested
- Full bore ball valve
- Lockable handle can be locked opened or closed
- Arrow indicating flow direction
- Standardsmark Certificate Number: SMKP26244 in compliance with 4796
- Watermark Certificate Number: WMKA21922 in compliance with AS5830.1
- Suitable for Potable Water – complies with AS/NZS 4020
- Dezincification Resistant (DR) Brass complies with AS 2345
- WSAA Appraised ball valves

Application

Elson Right Angle LOCKABLE METER Ball Valve is a flow control fitting, suit to capable of regulating and shutting off the flow in a water main or property service pipe.

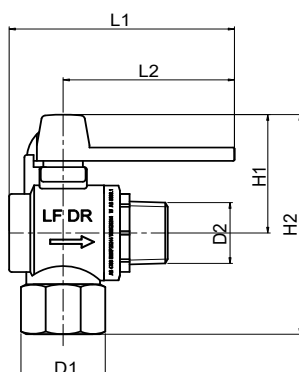
Technical Specifications

- Working Temperature Range: 1°C to 95°C
- Maximum Allowable Operating Pressure (MAOP) : 2500kPa

74S METER BALL VALVE RIGHT ANGLE LOCKABLE

elson LF METER BALL VALVE R/A L/ABLE LF DR BARSS R3/4 MI x Rp3/4 FI INLET

CODE	Size(D1)	Size(D2)	L1	L2	H1	H2	W	FINISH	UOM	PACK QTY	CTN QTY
LF74110	Rp3/4	R3/4	85	65	46.5	87.5	39	LF DR BRASS	EA	1	40



Features & Benefits

- 99.9% LEAD FREE* DR BRASS
- Pressure tested
- Full bore ball valve
- Lockable handle can be locked opened or closed
- Arrow indicating flow direction
- Standardsmark Certificate Number: SMKP26244 in compliance with 4796
- Watermark Certificate Number: WMKA21922 in compliance with AS5830.1
- Suitable for Potable Water – complies with AS/NZS 4020
- Dezincification Resistant (DR) Brass complies with AS 2345
- WSAA Appraised ball valves

Application

Elson Right Angle LOCKABLE METER Ball Valve is a flow control fitting, suit to capable of regulating and shutting off the flow in a water main or property service pipe.

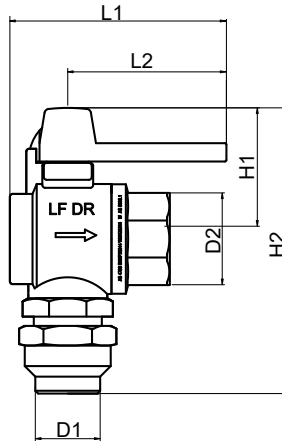
Technical Specifications

- Working Temperature Range: 1°C to 95°C
- Maximum Allowable Operating Pressure (MAOP) : 2500kPa

74S METER BALL VALVE RIGHT ANGLE LOCKABLE

elson LF METER BALL VALVE R/A L/ABLE LF DR BRASS Rp3/4 FI x 20Cn FLARED INLET

CODE	Size(D1)	Size(D2)	L1	L2	H1	H2	W	FINISH	UOM	PACK QTY	CTN QTY
LF74115	20Cn	Rp3/4	85	65	46.5	101	39	LF DR BRASS	EA	1	35



Features & Benefits

- 99.9% LEAD FREE* DR BRASS
- Pressure tested
- Full bore ball valve
- Lockable handle can be locked opened or closed
- Arrow indicating flow direction
- Standardsmark Certificate Number: SMKP26244 in compliance with 4796
- Watermark Certificate Number: WMKA21922 in compliance with AS5830.1
- Suitable for Potable Water – complies with AS/NZS 4020
- Dezincification Resistant (DR) Brass complies with AS 2345
- WSAA Appraised ball valves

Application

Elson Right Angle LOCKABLE METER Ball Valve is a flow control fitting, suit to capable of regulating and shutting off the flow in a water main or property service pipe.

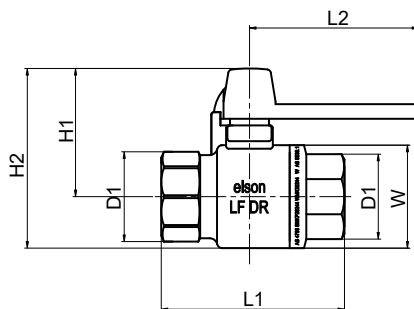
Technical Specifications

- Working Temperature Range: 1°C to 95°C
- Maximum Allowable Operating Pressure (MAOP) : 2500kPa

740S METER BALL VALVE LOCKABLE

elson LF METER BALL VALVE 740S LOCKABLE LF DR BRASS Rp3/4 FI x Rp3/4 FI

CODE	Size(D1)	L1	L2	H1	H2	W	FINISH	UOM	PACK QTY	CTN QTY
LF74052	Rp3/4	68.5	65	46.5	66	39	LF DR BRASS	EA	1	40



Features & Benefits

- 99.9% LEAD FREE* DR BRASS
- Pressure tested for the whole assembly
- Full bore ball valve
- Lockable handle can be locked opened or closed
- Standardsmark Certificate Number: SMKP26244 in compliance with 4796
- Watermark Certificate Number: WMKA21922 in compliance with AS5830.1
- Suitable for Potable Water – complies with AS/NZS 4020
- Dezincification Resistant (DR) Brass complies with AS 2345
- WSAA Appraised ball valves

Application

Elson LF 740 Series LOCKABLE METER Ball Valve is a flow control fitting, suit to capable of regulating and shutting off the flow in a water main or property service pipe

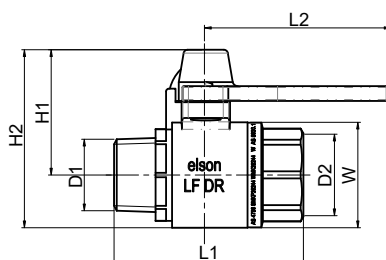
Technical Specifications

- Working Temperature Range: 1°C to 95°C
- Maximum Allowable Operating Pressure (MAOP) : 2500kPa

740S METER BALL VALVE LOCKABLE

elson LF METER BALL VALVE 740S LOCKABLE LF DR BRASS R3/4 MI x Rp3/4 FI

CODE	Size(D1)	Size(D2)	L1	L2	H1	H2	W	FINISH	UOM	PACK QTY	CTN QTY
LF74055	R3/4	Rp3/4	70	65	46.5	66	39	LF DR BRASS	EA	1	40



Features & Benefits

- 99.9% LEAD FREE* DR BRASS
- Pressure tested for the whole assembly
- Full bore ball valve
- Lockable handle can be locked opened or closed
- Standardsmark Certificate Number: SMKP26244 in compliance with 4796
- Watermark Certificate Number: WMKA21922 in compliance with AS5830.1
- Suitable for Potable Water – complies with AS/NZS 4020
- Dezincification Resistant (DR) Brass complies with AS 2345
- WSAA Appraised ball valves

Application

Elson LF 740 Series LOCKABLE METER Ball Valve is a flow control fitting, suit to capable of regulating and shutting off the flow in a water main or property service pipe

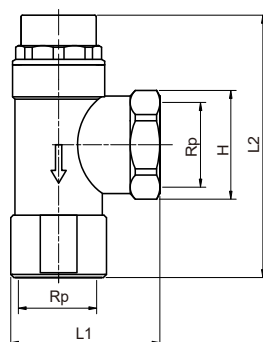
Technical Specifications

- Working Temperature Range: 1°C to 95°C
- Maximum Allowable Operating Pressure (MAOP) : 2500kPa

PRESSURE REDUCTION BOUNDARY VALVE RIGHT ANGLE

elson LF PRESSURE REDUCTION BOUNDARY VALVE R/A Rp3/4 FI LF DR BRASS

CODE	Size(D1)	Thread	L1	L2	H	FINISH	UOM	PACK QTY	CTN QTY
LF76010	DN20	Rp3/4	49	82	34	LF DR BRASS	EA	1	60



Features & Benefits

- 99.9% LEAD FREE* DR BRASS
- Excellent flow rates
- Fixed outlet pressure set
- Valve and strainer can be serviced
- Manufactured in our ISO9001 certified factory

Technical Specifications

- Max. Inlet Pressure 1600kPa
- Max. Inlet Temperature (Continuous) 80°C
- Factory set pressure: 500kPa
- Flow Rate at Pressure 160 L/Min
- Material: DR Brass in compliance with AS 2345
- Threads comply with AS 1722.2
- Suitable for potable water, Comply with AS/NZS 4020
- WaterMark Certificate No. WMK26481, Conforms with AS1357.2

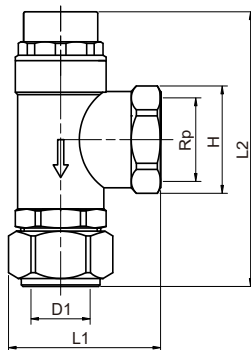
Application

Pressure Reduction Valves are fitted in water systems to moderate and stabilise mains water pressure. The valve maintains a constant maximum outlet pressure to protect downstream installations from variations in supply pressure description. The factory set pressure of the valve is the common pressure of 500kPa.

PRESSURE REDUCTION BOUNDARY VALVE RIGHT ANGLE

elson LF PRV BOUNDARY R/A 20Cn C/OLIVE LF DR BRASS

CODE	Size(D1)	Thread	L1	L2	H	FINISH	UOM	PACK QTY	CTN QTY
LF76011	DN20	Rp3/4	50	87	34	LF DR BRASS	EA	1	60



Application

Pressure Reduction Valves are fitted in water systems to moderate and stabilise mains water pressure. The valve maintains a constant maximum outlet pressure to protect downstream installations from variations in supply pressure description. The factory set pressure of the valve is the common pressure of 500kPa.

Features & Benefits

- 99.9% LEAD FREE* DR BRASS
- Excellent flow rates
- Fixed outlet pressure set
- Valve and strainer can be serviced
- Manufactured in our ISO9001 certified factory

Technical Specifications

- Max. Inlet Pressure 1600kPa
- Max. Inlet Temperature (Continuous) 80°C
- Factory set pressure: 500kPa
- Flow Rate at Pressure 160 L/Min
- Material: DR Brass in compliance with AS 2345
- Threads comply with AS 1722.2
- Suitable for potable water, Comply with AS/NZS 4020
- WaterMark Certificate No. WMK26481, Conforms with AS1357.2

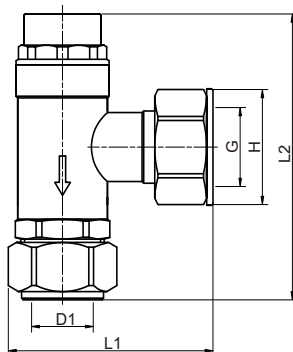
PRESSURE REDUCTION BOUNDARY VALVE RIGHT ANGLE

elson LF PRV BOUNDARY R/A 20Cn C/O LF DR BRASS **LOOSE NUT**

CODE	Size(D1)	Thread	L1	L2	H	FINISH	UOM	PACK QTY	CTN QTY
LF76007	DN20	G3/4	65	87	35.5	LF DR BRASS	EA	1	50



LOOSE NUT



Application

Pressure Reduction Valves are fitted in water systems to moderate and stabilise mains water pressure. The valve maintains a constant maximum outlet pressure to protect downstream installations from variations in supply pressure description. The factory set pressure of the valve is the common pressure of 500kPa.

Features & Benefits

- 99.9% LEAD FREE* DR BRASS
- Excellent flow rates
- Fixed outlet pressure set
- Valve and strainer can be serviced
- Loose Nut Inlet connection
- Manufactured in our ISO9001 certified factory

Technical Specifications

- Max. Inlet Pressure 1600kPa
- Max. Inlet Temperature (Continuous) 80°C
- Factory set pressure: 500kPa
- Flow Rate at Pressure 160 L/Min
- Material: DR Brass in compliance with AS 2345
- Threads comply with AS 1722.2
- Suitable for potable water, Comply with AS/NZS 4020
- WaterMark Certificate No. WMK26481, Conforms with AS1357.2

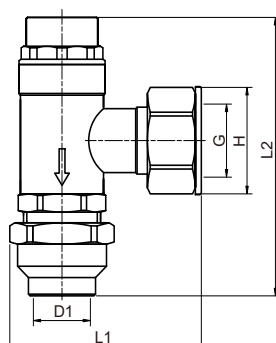
PRESSURE REDUCTION BOUNDARY VALVE RIGHT ANGLE

elson LF PRV BOUNDARY R/A 20Cn FLARED LF DR BRASS **LOOSE NUT**

CODE	Size(D1)	Thread	L1	L2	H	FINISH	UOM	PACK QTY	CTN QTY
LF76008	DN20	G3/4	66	91.5	35.5	LF DR BRASS	EA	1	50



LOOSE NUT



Application

Pressure Reduction Valves are fitted in water systems to moderate and stabilise mains water pressure. The valve maintains a constant maximum outlet pressure to protect downstream installations from variations in supply pressure description. The factory set pressure of the valve is the common pressure of 500kPa.

Features & Benefits

- 99.9% LEAD FREE* DR BRASS
- Excellent flow rates
- Fixed outlet pressure set
- Valve and strainer can be serviced
- Loose Nut Inlet connection
- Manufactured in our ISO9001 certified factory

Technical Specifications

- Max. Inlet Pressure 1600kPa
- Max. Inlet Temperature(Continuous) 80°C
- Factory set pressure: 500kPa
- Flow Rate at Pressure 160 L/Min
- Material: DR Brass in compliance with AS 2345
- Threads comply with AS 1722.2
- Suitable for potable water, Comply with AS/NZS 4020
- WaterMark Certificate No. WMK26481, Conforms with AS1357.2

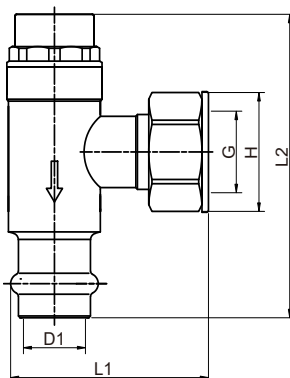
PRESSURE REDUCTION BOUNDARY VALVE RIGHT ANGLE

elson LF PRV BOUNDARY R/A DN20 PRESS LF DR BRASS **LOOSE NUT**

CODE	Size(D1)	Thread	L1	L2	H	FINISH	UOM	PACK QTY	CTN QTY
LF76009	DN20	G3/4	61.5	89	35.5	LF DR BRASS	EA	1	50



LOOSE NUT



Application

Pressure Reduction Valves are fitted in water systems to moderate and stabilise mains water pressure. The valve maintains a constant maximum outlet pressure to protect downstream installations from variations in supply pressure description. The factory set pressure of the valve is the common pressure of 500kPa.

Features & Benefits

- 99.9% LEAD FREE* DR BRASS
- Excellent flow rates
- Fixed outlet pressure set
- Valve and strainer can be serviced
- Loose Nut Inlet connection
- Manufactured in our ISO9001 certified factory

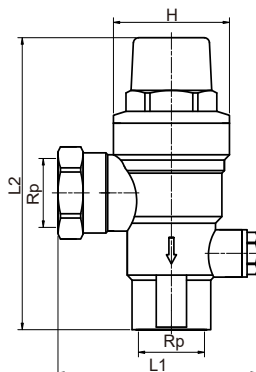
Technical Specifications

- Max. Inlet Pressure 1600kPa
- Max. Inlet Temperature (Continuous) 80°C
- Factory set pressure: 500kPa
- Flow Rate at Pressure 160 L/Min
- Material: DR Brass in compliance with AS 2345
- Threads comply with AS 1722.2
- Suitable for potable water, Comply with AS/NZS 4020.
- WaterMark Certificate No. WMK26481, Conforms with AS1357.2

PRV ADJUSTABLE BOUNDARY RIGHT ANGLE

elson LF PRV ADJUSTABLE BOUNDARY R/A Rp3/4 FI LF DR BRASS

CODE	Size(D1)	Thread	L1	L2	H	FINISH	UOM	PACK QTY	CTN QTY
LF76110	DN20	Rp3/4	79	111	46	LF DR BRASS	EA	1	



Application

Pressure Reduction Valves are fitted in water systems to moderate and stabilise mains water pressure.

The valve maintains a constant maximum outlet pressure to protect downstream installations from variations in supply pressure description. The factory set pressure of the valve is the common pressure of 500kPa, and it can also be adjusted between 150-600kPa.

Features & Benefits

- 99.9% LEAD FREE* DR BRASS
- Excellent flow rates
- Adjustable Outlet Pressure 150-600kPa
- Valve and strainer can be serviced
- Manufactured in our ISO9001 certified factory

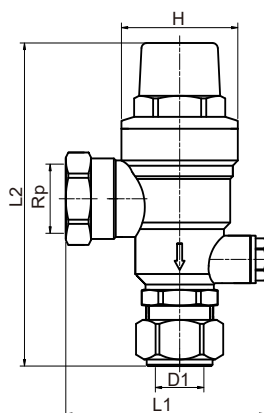
Technical Specifications

- Max. Inlet Pressure 1600kPa
- Max. Inlet Temperature (Continuous) 80°C
- Factory set pressure: 500kPa
- Outlet Pressure: 150 - 600kPa
- Flow Rates: 150kPa-18 L/Min; 600kPa-110 L/Min
- Material: DR Brass in compliance with AS 2345
- Threads comply with AS 1722.2
- Suitable for potable water, Comply with AS/NZS 4020.
- WaterMark Certificate No. WMK26481, Conforms with AS1357.2

PRV ADJUSTABLE BOUNDARY RIGHT ANGLE

elson LF PRV ADJUSTABLE BOUNDARY R/A 20Cn C/OLIVE LF DR BRASS

CODE	Size(D1)	Thread	L1	L2	H	FINISH	UOM	PACK QTY	CTN QTY
LF76111	DN20	Rp3/4	79	122.5	46	LF DR BRASS	EA	1	



Application

Pressure Reduction Valves are fitted in water systems to moderate and stabilise mains water pressure.

The valve maintains a constant maximum outlet pressure to protect downstream installations from variations in supply pressure description. The factory set pressure of the valve is the common pressure of 500kPa, and it can also be adjusted between 150-600kPa.

Features & Benefits

- 99.9% LEAD FREE* DR BRASS
- Excellent flow rates
- Adjustable Outlet Pressure 150-600kPa
- Valve and strainer can be serviced
- Manufactured in our ISO9001 certified factory

Technical Specifications

- Max. Inlet Pressure 1600kPa
- Max. Inlet Temperature (Continuous) 80°C
- Factory set pressure: 500kPa
- Outlet Pressure: 150 - 600kPa
- Flow Rates: 150kPa-18 L/Min; 600kPa-110 L/Min
- Material: DR Brass in compliance with AS 2345
- Threads comply with AS 1722.2
- Suitable for potable water, Comply with AS/NZS 4020
- WaterMark Certificate No. WMK26481, Conforms with AS1357.2



WATER METER CONNECTION KIT WITH BOUNDARY PRV

CODE	DESCRIPTION	UOM	PACK QTY	CTN QTY
LF74202	elson LF METER CONN. KIT L/ABLE W/ L/N PRV R/A LF DR 20Cn C/O INLET	KIT	1	16

Include:

- LF74135 x 1 elson LF METER B/V R/A L/ABLE LF DR BRASS Rp3/4 FI X 20Cn C/O INLET
- LF73011 x 1 elson LF DUAL CHECK VALVE LF DR BRASS G3/4B MI x Rp3/4 FI
- LF76007 x 1 elson LF PRV BOUNDARY R/A 20Cn C/O LF DR BRASS L/NUT



WATER METER CONNECTION KIT WITH BOUNDARY PRV

CODE	DESCRIPTION	UOM	PACK QTY	CTN QTY
LF74204	elson LF METER CONN. KIT L/ABLE W/ L/N PRV R/A LF DR 20Cn FLARED INLET	KIT	1	16

Include:

- LF74138 x 1 elson LF METER B/V R/A L/ABLE LF DR BRASS Rp3/4 FI X 20Cn FLARED INLET
- LF73011 x 1 elson LF DUAL CHECK VALVE LF DR BRASS G3/4B MI x Rp3/4 FI
- LF76008 x 1 elson LF PRV BOUNDARY R/A 20Cn FLARED LF DR BRS L/NUT

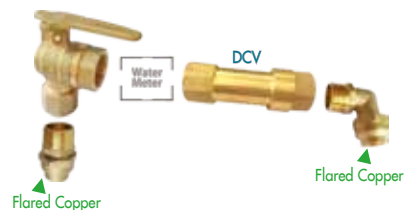


WATER METER CONNECTION KIT WITH BOUNDARY PRV

CODE	DESCRIPTION	UOM	PACK QTY	CTN QTY
LF74206	elson LF METER CONN. KIT L/ABLE W/ L/N PRV R/A LF DR DN20 PRESS INLET	KIT	1	16

Include:

- LF74139 x 1 elson LF METER B/V R/A L/ABLE LF DR BRASS Rp3/4 FI X DN20 PRESS INLET
- LF73011 x 1 elson LF DUAL CHECK VALVE LF DR BRASS G3/4B MI x Rp3/4 FI
- LF76009 x 1 elson LF PRV BOUNDARY R/A DN20 PRESS LF DR BRASS L/NUT



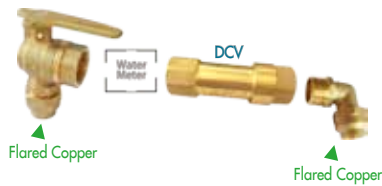
WATER METER CONNECTION KIT

CODE	DESCRIPTION	UOM	PACK QTY	CTN QTY
LF74200	elson LF METER CONNECTION KIT L/ABLE LF DR BRASS Rp3/4 FI INLET	KIT	1	16

Include:

- LF74136 x 1 elson LF METER B/V R/A LOCKABLE LF DR BRASS Rp3/4 FI X Rp3/4 FI INLET
- LF73010 x 1 elson LF DUAL CHECK VALVE LF DR BRASS Rp3/4 F/F
- LF85148 x 1 elson LF UNION LF DR BRASS C x M 20Cn x R3/4 MI
- LF85464 x 1 elson LF ELBOW LF DR BRASS C x M 20Cn x R3/4 MI





WATER METER CONNECTION KIT

CODE	DESCRIPTION	UOM	PACK QTY	CTN QTY
LF74240	elson LF METER CONNECTION KIT L/ABLE LF DR BRASS 20Cn FLARED INLET	KIT	1	16

Include:

- LF74138 x 1 elson LF METER B/V R/A L/ABLE LF DR BRASS Rp3/4 FI X 20Cn FLARED INLET
- LF73010 x 1 elson LF DUAL CHECK VALVE LF DR BRASS Rp3/4 F/F
- LF85464 x 1 elson LF ELBOW LF DR BRASS C x M 20Cn x R3/4 MI

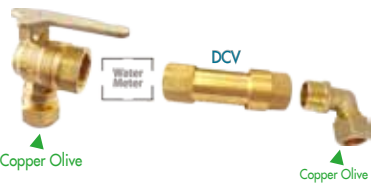


WATER METER CONNECTION KIT

CODE	DESCRIPTION	UOM	PACK QTY	CTN QTY
LF74241	elson LF METER CONNECTION KIT L/ABLE LF DR BRASS 20Cn FLARED INLET	KIT	1	16

Include:

- LF74138 x 1 elson LF METER B/V R/A L/ABLE LF DR BRASS Rp3/4 FI X 20Cn FLARED INLET
- LF73010 x 1 elson LF DUAL CHECK VALVE LF DR BRASS Rp3/4 F/F
- LF81246 x 1 elson LF NIPPLE HEXAGON LF DR BRASS R3/4



WATER METER CONNECTION KIT

CODE	DESCRIPTION	UOM	PACK QTY	CTN QTY
LF74242	elson LF METER CONNECTION KIT L/ABLE LF DR BRASS 20Cn C/OLIVE INLET	KIT	1	16

Include:

- LF74135 x 1 elson LF METER B/V R/A L/ABLE LF DR BRASS Rp3/4 FI X 20Cn C/O INLET
- LF73010 x 1 elson LF DUAL CHECK VALVE LF DR BRASS Rp3/4 F/F
- LF87314 x 1 elson LF ELBOW LF DR BRASS C x M 20Cn x R3/4

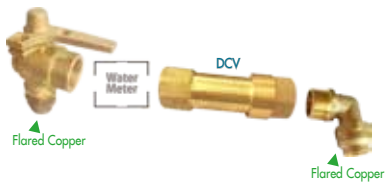


WATER METER CONNECTION KIT

CODE	DESCRIPTION	UOM	PACK QTY	CTN QTY
LF74100	elson LF METER CONNECTION KIT L/ABLE LF DR BRASS Rp3/4 FI INLET	KIT	1	16

Include:

- LF74105 x 1 elson LF METER B/V R/A L/ABLE LF DR BRASS Rp3/4 FI X Rp3/4 FI INLET
- LF73010 x 1 elson LF DUAL CHECK VALVE LF DR BRASS Rp3/4 F/F
- LF85148 x 1 elson LF UNION LF DR BRASS C x M 20Cn x R3/4 MI
- LF85464 x 1 elson LF ELBOW LF DR BRASS C x M 20Cn x R3/4 MI



WATER METER CONNECTION KIT

CODE	DESCRIPTION	UOM	PACK QTY	CTN QTY
LF74140	elson LF METER CONNECTION KIT L/ABLE LF DR BRASS 20Cn FLARED INLET	KIT	1	16



Include:

- LF74115 x 1 elson LF METER B/V R/A L/ABLE LF DR BRASS Rp3/4 FI X 20Cn FLARED IN LET
- LF73010 x 1 elson LF DUAL CHECK VALVE LF DR BRASS Rp3/4 F/F
- LF85464 x 1 elson LF ELBOW LF DR BRASS C x M 20Cn x R3/4 MI



WATER METER CONNECTION KIT

CODE	DESCRIPTION	UOM	PACK QTY	CTN QTY
LF74141	elson LF METER CONNECTION KIT L/ABLE LF DR BRASS 20Cn FLARED INLET	KIT	1	16



Include:

- LF74115 x 1 elson LF METER B/V R/A L/ABLE LF DR BRASS Rp3/4 FI X 20Cn FLARED IN LET
- LF73010 x 1 elson LF DUAL CHECK VALVE LF DR BRASS Rp3/4 F/F
- LF81246 x 1 elson LF NIPPLE HEXAGON LF DR BRASS R3/4



SUB METER ASSEMBLY KIT DN20

CODE	DESCRIPTION	UOM	PACK QTY	CTN QTY
LF74160	elson LF SUB WATER METER ASSEMBLY KIT L/A LF DR DN20 BALL JOINT NSW	KIT	1	8
LF74161	elson LF SUB WATER METER ASSEMBLY KIT L/A LF DR DN20 NUT & TAIL	KIT	1	8



NOT LEAD FREE DR BRASS

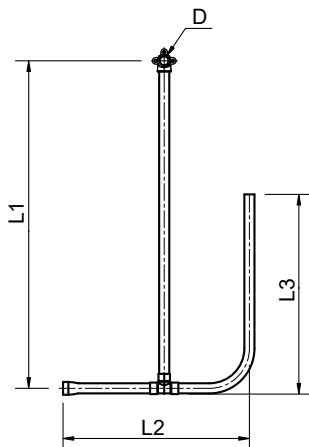
SUB METER SPACER

CODE	DESCRIPTION	UOM	PACK QTY	CTN QTY
74162	elson SUB METER SPACER DN20 BALL JOINT NSW	EA	1	50
74163	elson SUB METER SPACER DN20 NUT & TAIL	EA	1	60

WATER METER RISER

elson LF WATER METER TAPPING RISER

CODE	D	L1	L2	L3	FINISH	UOM	PACK QTY	CTN QTY
LF65276	Rp1/2	615	350	375	LF DR BRASS	EA	1	10
LF65278	Rp1/2	720	340	400	LF DR BRASS	EA	1	10



Features & Benefits

- 99.9% LEAD FREE* DR BRASS
- Manufactured in our ISO9001 certified factory

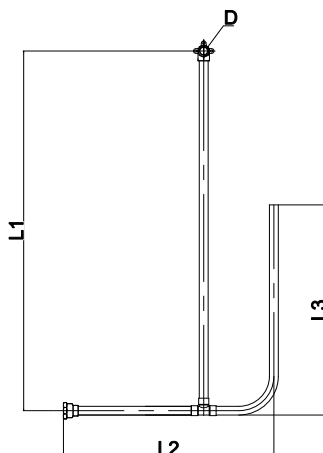
Technical Specifications

- DR property complies with AS 2345
- Suitable for Potable Water, Complies with AS/NZS 4020
- Maximum Working Temperature: 60°C
- Maximum Working Pressure: 1600 KPa
- Threads: Complies with AS ISO 7.1, AS ISO 7.2

WATER METER RISER

elson LF WATER METER TAPPING RISER

CODE	D	L1	L2	L3	FINISH	UOM	PACK QTY	CTN QTY
LF65286	Rp1/2	785	234	460	LF DR BRASS	EA	1	10
LF65288	Rp1/2	785	450	460	LF DR BRASS	EA	1	10

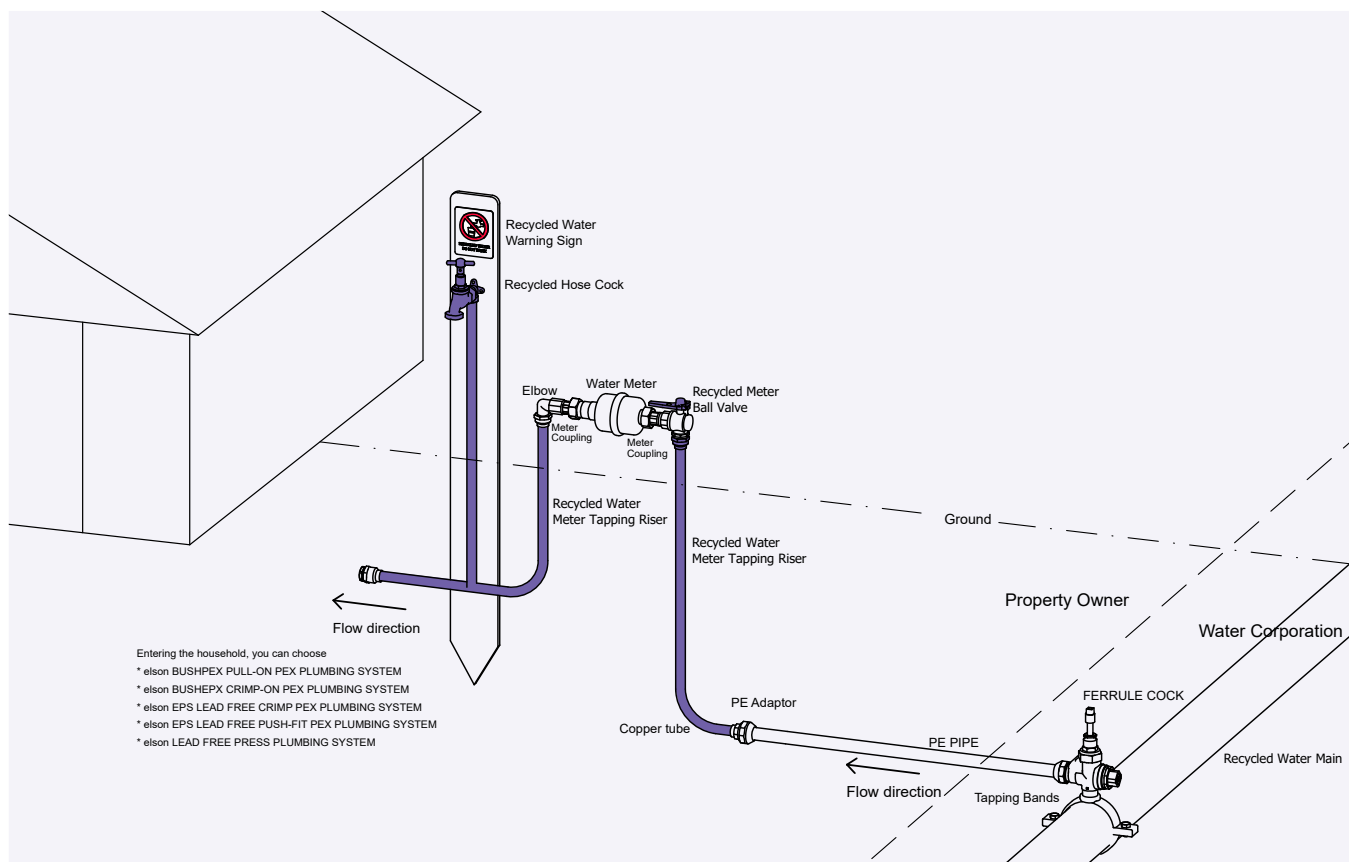


Features & Benefits

- 99.9% LEAD FREE* DR BRASS
- Manufactured in our ISO9001 certified factory

Technical Specifications

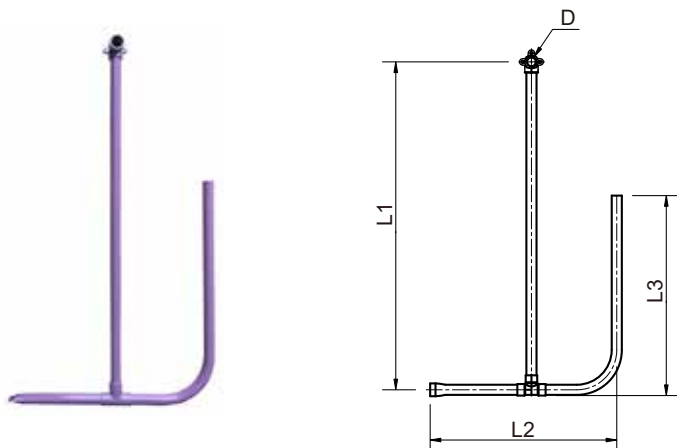
- DR property complies with AS 2345
- Suitable for Potable Water, Complies with AS/NZS 4020
- Maximum Working Temperature: 60°C
- Maximum Working Pressure: 1600 KPa
- Threads: Complies with AS ISO 7.1, AS ISO 7.2



RECYCLED WATER METER RISER

elson LF RW METER TAPPING RISER LILAC

CODE	D	L1	L2	L3	FINISH	UOM	PACK QTY	CTN QTY
LF65277	G5/8	615	350	375	LF DR BRASS	EA	1	10
LF65279	G5/8	720	340	400	LF DR BRASS	EA	1	10



Features & Benefits

- 99.9% LEAD FREE* DR BRASS
- Manufactured in our ISO9001 certified factory

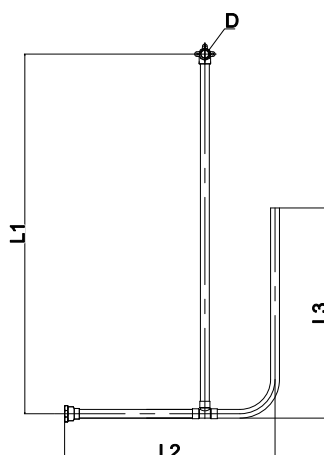
Technical Specifications

- DR property complies with AS 2345
- Suitable for Potable Water, Complies with AS/NZS 4020
- Maximum Working Temperature: 60°C
- Maximum Working Pressure: 1600 KPa
- Threads: Complies with AS ISO 7.1, AS ISO 7.2

RECYCLED WATER METER RISER

elson LF RW METER TAPPING RISER LILAC

CODE	D	L1	L2	L3	FINISH	UOM	PACK QTY	CTN QTY
LF65287	R5/8	785	234	460	LF DR BRASS	EA	1	10
LF65289	R5/8	785	450	460	LF DR BRASS	EA	1	10



Features & Benefits

- 99.9% LEAD FREE* DR BRASS
- Manufactured in our ISO9001 certified factory

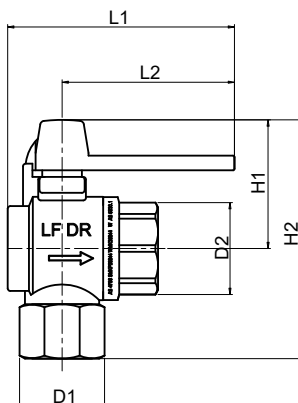
Technical Specifications

- DR property complies with AS 2345
- Suitable for Potable Water, Complies with AS/NZS 4020
- Maximum Working Temperature: 60°C
- Maximum Working Pressure: 1600 KPa
- Threads: Complies with AS ISO 7.1, AS ISO 7.2

74S RECYCLED WATER METER BALL VALVE RIGHT ANGLE LOCKABLE

elson LF METER B/V R/A L/ABL LILAC LF DR BRASS Rp3/4 FI x Rp3/4 FI INLET

CODE	Size(D1)	Size(D2)	L1	L2	H1	H2	W	FINISH	UOM	PACK QTY	CTN QTY
LF74120	Rp3/4	Rp3/4	85	65	46.5	87.5	39	LF DR BRASS	EA	1	40



Features & Benefits

- 99.9% LEAD FREE* DR BRASS
- Pressure tested
- Full bore ball valve
- Lilac Lockable handle can be locked opened or closed
- Lilac handle for use with recycled water applications
- Arrow indicating flow direction
- Standardsmark Certificate Number: SMKP26244 in compliance with 4796
- Watermark Certificate Number: WMKA21922 in compliance with AS5830.1
- Suitable for Potable Water – complies with AS/NZS 4020
- Dezincification Resistant (DR) Brass complies with AS 2345
- WSAA Appraised ball valves

Technical Specifications

- Working Temperature Range: 1°C to 95°C
- Maximum Allowable Operating Pressure (MAOP) : 2500kPa

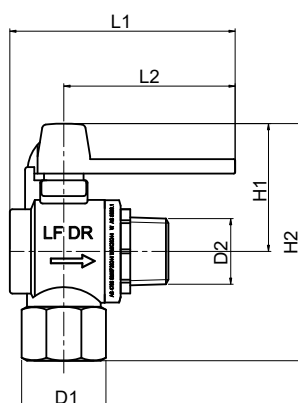
Application

Elson Right Angle LOCKABLE METER Ball Valve is a flow control fitting, suit to capable of regulating and shutting off the flow in a water main or property service pipe.

74S RECYCLED WATER METER BALL VALVE RIGHT ANGLE LOCKABLE

elson LF METER B/V R/A L/ABLE LILAC LF DR BRS R3/4 MI x Rp3/4 FI INLET

CODE	Size(D1)	Size(D2)	L1	L2	H1	H2	W	FINISH	UOM	PACK QTY	CTN QTY
LF74125	Rp3/4	R3/4	85	65	46.5	87.5	39	LF DR BRASS	EA	1	40



Application

Elson Right Angle LOCKABLE METER Ball Valve is a flow control fitting, suit to capable of regulating and shutting off the flow in a water main or property service pipe.

Features & Benefits

- 99.9% LEAD FREE* DR BRASS
- Pressure tested
- Full bore ball valve
- Lilac Lockable handle can be locked opened or closed
- Lilac handle for use with recycled water applications
- Arrow indicating flow direction
- Standardsmark Certificate Number: SMKP26244 in compliance with 4796
- Watermark Certificate Number: WMKA21922 in compliance with AS5830.1
- Suitable for Potable Water – complies with AS/NZS 4020
- Dezincification Resistant (DR) Brass complies with AS 2345
- WSAA Appraised ball valves

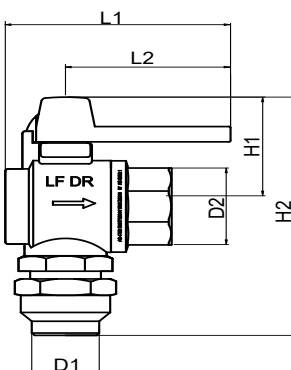
Technical Specifications

- Working Temperature Range: 1°C to 95°C
- Maximum Allowable Operating Pressure (MAOP) : 2500kPa

74S RECYCLED WATER METER BALL VALVE RIGHT ANGLE LOCKABLE

elson LF METER B/V R/A L/ABLE LILAC LF DR Rp3/4 FI x 20Cn FLARED INLET

CODE	Size(D1)	Size(D2)	L1	L2	H1	H2	W	FINISH	UOM	PACK QTY	CTN QTY
LF74130	20Cn	Rp3/4	85	65	46.5	101	39	LF DR BRASS	EA	1	35



Application

Elson Right Angle LOCKABLE METER Ball Valve is a flow control fitting, suit to capable of regulating and shutting off the flow in a water main or property service pipe.

Features & Benefits

- 99.9% LEAD FREE* DR BRASS
- Pressure tested
- Full bore ball valve
- Lilac Lockable handle can be locked opened or closed
- Lilac handle for use with recycled water applications
- Arrow indicating flow direction
- Standardsmark Certificate Number: SMKP26244 in compliance with 4796
- Watermark Certificate Number: WMKA21922 in compliance with AS5830.1
- Suitable for Potable Water – complies with AS/NZS 4020
- Dezincification Resistant (DR) Brass complies with AS 2345
- WSAA Appraised ball valves

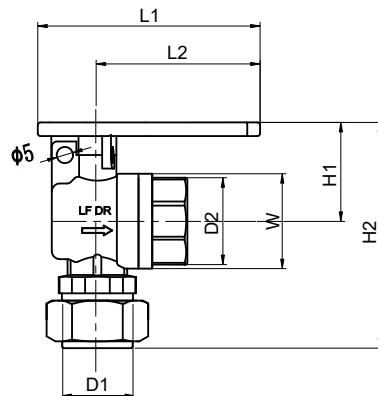
Technical Specifications

- Working Temperature Range: 1°C to 95°C
- Maximum Allowable Operating Pressure (MAOP) : 2500kPa

STANDARD RECYCLED WATER METER BALL VALVE RIGHT ANGLE LOCKABLE

elson LF METER B/V R/A L/ABL LILAC LF DR BRS Rp3/4 FI x 20Cn C/O INLET

CODE	Size(D1)	Size(D2)	L1	L2	H1	H2	W	FINISH	UOM	PACK QTY	CTN QTY
LF74235	20Cn	Rp3/4	82	60	35.5	86	34.5	LF DR BRASS	EA	1	50



Application

Elson Right Angle LOCKABLE METER Ball Valve is a flow control fitting, suit to capable of regulating and shutting off the flow in a water main or property service pipe.

Features & Benefits

- 99.9% LEAD FREE* DR BRASS
- Pressure tested
- Full bore ball valve
- Lockable handle can be locked opened or closed
- Arrow indicating flow direction
- Standardsmark Certificate Number: SMKP26244 in compliance with 4796
- Watermark Certificate Number: WMKA21922 in compliance with AS5830.1
- Suitable for Potable Water – complies with AS/NZS 4020
- Dezincification Resistant (DR) Brass complies with AS 2345
- WSAA Appraised ball valves

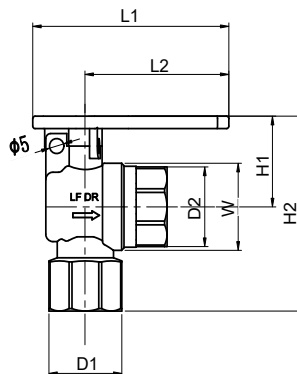
Technical Specifications

- Working Temperature Range: 1°C to 95°C
- Maximum Allowable Operating Pressure (MAOP) : 2500kPa

STANDARD RECYCLED WATER METER BALL VALVE RIGHT ANGLE LOCKABLE

elson LF METER B/V R/A L/ABL LILAC LF DR BRS Rp3/4 FI x Rp3/4 FI INLET

CODE	Size(D1)	Size(D2)	L1	L2	H1	H2	W	FINISH	UOM	PACK QTY	CTN QTY
LF74236	Rp3/4	Rp3/4	82	60	35.5	77	34.5	LF DR BRASS	EA	1	50



Application

Elson Right Angle LOCKABLE METER Ball Valve is a flow control fitting, suit to capable of regulating and shutting off the flow in a water main or property service pipe.

Features & Benefits

- 99.9% LEAD FREE* DR BRASS
- Pressure tested for the whole assembly
- Lockable handle can be locked opened or closed
- Lilac valve for use with recycled water applications
- Standardsmark Certificate Number: SMKP26244 in compliance with 4796
- Watermark Certificate Number: WMKA21922 in compliance with AS5830.1
- Suitable for Potable Water – complies with AS/NZS 4020
- Dezincification Resistant (DR) Brass complies with AS 2345
- WSAA Appraised ball valves

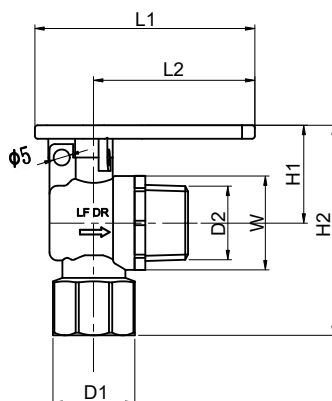
Technical Specifications

- Working Temperature Range: 1°C to 95°C
- Maximum Allowable Operating Pressure (MAOP) : 2500kPa

STANDARD RECYCLED WATER METER BALL VALVE RIGHT ANGLE LOCKABLE

elson LF METER B/V R/A L/ABLE LILAC LF DR BRS R3/4 MI x Rp3/4 FI INLET

CODE	Size(D1)	Size(D2)	L1	L2	H1	H2	W	FINISH	UOM	PACK QTY	CTN QTY
LF74237	Rp3/4	R3/4	82	60	35.5	77	34.5	LF DR BRASS	EA	1	50



Features & Benefits

- 99.9% LEAD FREE* DR BRASS
- Pressure tested
- Full bore ball valve
- Lockable handle can be locked opened or closed
- Arrow indicating flow direction
- Standardsmark Certificate Number: SMKP26244 in compliance with 4796
- Watermark Certificate Number: WMKA21922 in compliance with AS5830.1
- Suitable for Potable Water – complies with AS/NZS 4020
- Dezincification Resistant (DR) Brass complies with AS 2345
- WSAA Appraised ball valves

Application

Elson Right Angle LOCKABLE METER Ball Valve is a flow control fitting, suit to capable of regulating and shutting off the flow in a water main or property service pipe.

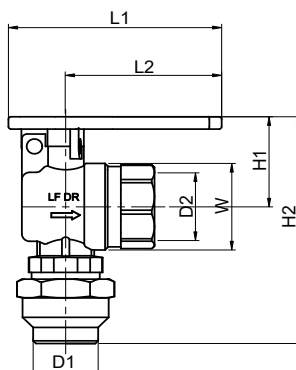
Technical Specifications

- Working Temperature Range: 1°C to 95°C
- Maximum Allowable Operating Pressure (MAOP) : 2500kPa

STANDARD RECYCLED WATER METER BALL VALVE RIGHT ANGLE LOCKABLE

elson LF METER B/V R/A L/ABLE LILAC LF DR Rp3/4 FI x 20Cn FLARED INLET

CODE	Size(D1)	Size(D2)	L1	L2	H1	H2	W	FINISH	UOM	PACK QTY	CTN QTY
LF74238	20Cn	Rp3/4	82	60	35.5	89	34.5	LF DR BRASS	EA	1	40



Features & Benefits

- 99.9% LEAD FREE* DR BRASS
- Pressure tested
- Full bore ball valve
- Lockable handle can be locked opened or closed
- Arrow indicating flow direction
- Standardsmark Certificate Number: SMKP26244 in compliance with 4796
- Watermark Certificate Number: WMKA21922 in compliance with AS5830.1
- Suitable for Potable Water – complies with AS/NZS 4020
- Dezincification Resistant (DR) Brass complies with AS 2345
- WSAA Appraised ball valves

Application

Elson Right Angle LOCKABLE METER Ball Valve is a flow control fitting, suit to capable of regulating and shutting off the flow in a water main or property service pipe.

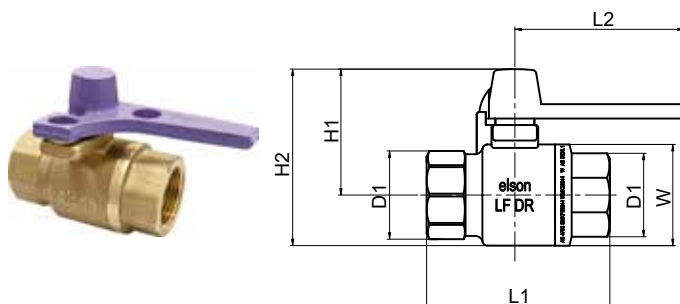
Technical Specifications

- Working Temperature Range: 1°C to 95°C
- Maximum Allowable Operating Pressure (MAOP) : 2500kPa

740S RECYCLED WATER METER BALL VALVE LOCKABLE

elson LF METER B/V 740S L/ABL LILAC LF DR BRASS Rp3/4 FI x Rp3/4 FI

CODE	Size(D1)	L1	L2	H1	H2	W	FINISH	UOM	PACK QTY	CTN QTY
LF74062	Rp3/4	68.5	65	46.5	66	39	LF DR BRASS	EA	1	40



Application

Elson LF740 Series LOCKABLE METER Ball Valve is a flow control fitting, suit to capable of regulating and shutting off the flow in a water main or property service pipe.

Features & Benefits

- 99.9% LEAD FREE* DR BRASS
- Pressure tested
- Full bore ball valve
- Lilac lockable handle can be locked opened or closed
- Lilac handle for use with recycled water applications
- Standardsmark Certificate Number: SMKP26244 in compliance with 4796
- Watermark Certificate Number: WMKA21922 in compliance with AS5830.1
- Suitable for Potable Water – complies with AS/NZS 4020
- Dezincification Resistant (DR) Brass complies with AS 2345
- WSAA Appraised ball valves

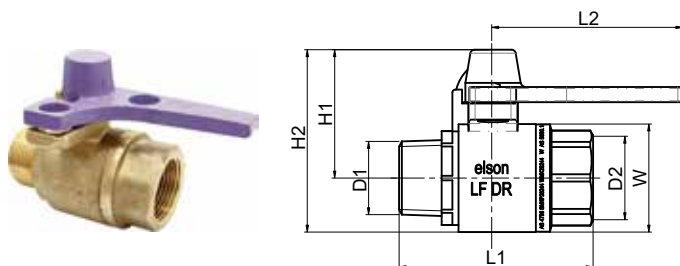
Technical Specifications

- Working Temperature Range: 1°C to 95°C
- Maximum Allowable Operating Pressure (MAOP) : 2500kPa

740S RECYCLED WATER METER BALL VALVE LOCKABLE

elson LF METER B/V 740S L/ABLE LILAC LF DR BRASS R3/4 MI x Rp3/4 FI

CODE	Size(D1)	Size(D2)	L1	L2	H1	H2	W	FINISH	UOM	PACK QTY	CTN QTY
LF74065	R3/4	Rp3/4	70	65	46.5	66	39	LF DR BRASS	EA	1	40



Application

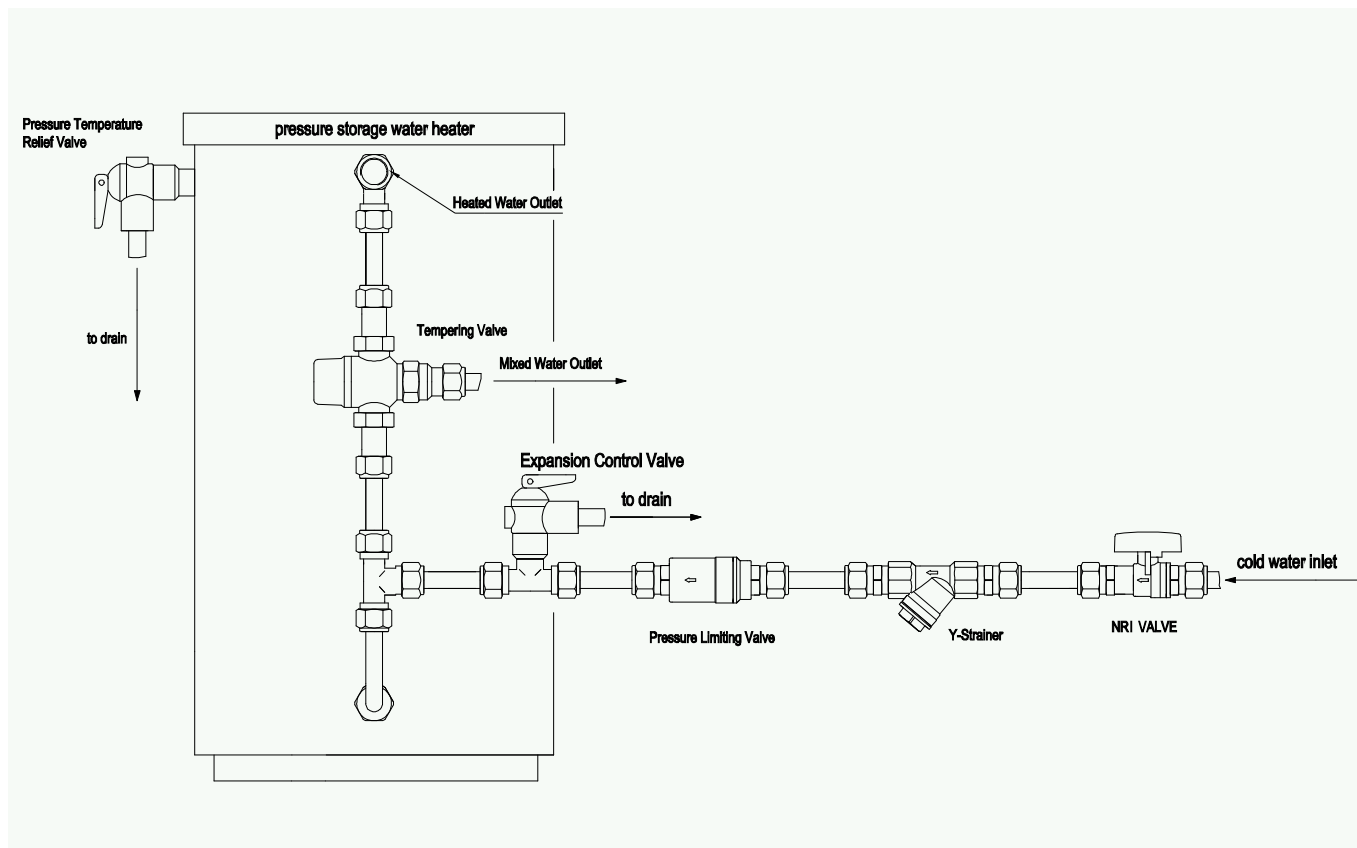
Elson LF740 Series LOCKABLE METER Ball Valve is a flow control fitting, suit to capable of regulating and shutting off the flow in a water main or property service pipe.

Features & Benefits

- 99.9% LEAD FREE* DR BRASS
- Pressure tested
- Full bore ball valve
- Lilac lockable handle can be locked opened or closed
- Lilac handle for use with recycled water applications
- Standardsmark Certificate Number: SMKP26244 in compliance with 4796
- Watermark Certificate Number: WMKA21922 in compliance with AS5830.1
- Suitable for Potable Water – complies with AS/NZS 4020
- Dezincification Resistant (DR) Brass complies with AS 2345
- WSAA Appraised ball valves

Technical Specifications

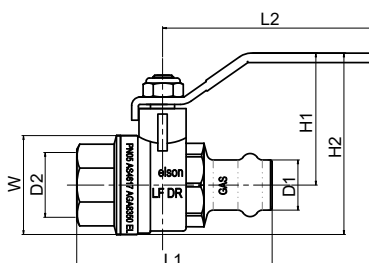
- Working Temperature Range: 1°C to 95°C
- Maximum Allowable Operating Pressure (MAOP) : 2500kPa



PRESS GAS BALL VALVE

elson LF PRESS WATER BALL VALVE LF DR BRASS L/H

CODE	Size(D1)	Size(D2)	L1	L2	H1	H2	W	FINISH	UOM	PACK QTY	CTN QTY
LF73560	DN15	Rp1/2	65.4	90	47	62.6	31.5	LF DR BRASS	EA	1	90
LF73562	DN20	Rp3/4	82.2	103.2	53.3	72.8	39	LF DR BRASS	EA	1	50



Application

elson LF PRESS GAS BALL VALVES are two-piece DR Brass body can be used on natural GAS (NG), simulated natural gas (SNG), town gas (TG), tempered liquefied petroleum gas (TLP) and liquefied petroleum gas (LGP) in vapour phase.

Features & Benefits

- 99.9% LEAD FREE* DR BRASS
- AGA License Number: 8350 in compliance with AS4617
- Suitable for Potable Water complies with AS/NZS 4020
- Dezincification Resistance Brass complies with AS 2345
- Pressure Tested
- Full Bore Ball Valve

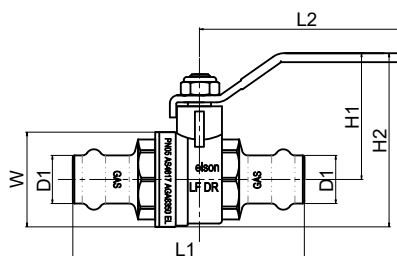
Technical Specifications

- Working Temperature Range: 1°C to 70°C
- Gas Maximum Allowable Operating Pressure (MAOP) :500kPa
- Size Range: DN15 73560; DN20 73562

PRESS GAS BALL VALVE

elson LF PRESS WATER BALL VALVE LF DR BRASS L/H

CODE	Size(D1)	L1	L2	H1	H2	W	FINISH	UOM	PACK QTY	CTN QTY
LF73680	DN15	82	90	47	62.6	31.5	LF DR BRASS	EA	1	80
LF73682	DN20	101	103.5	53.3	72.8	39	LF DR BRASS	EA	1	50
LF73684	DN25	112	103.5	57.2	80.9	47.4	LF DR BRASS	EA	1	30
LF73686	DN32	128.5	135	65.6	94.7	58.2	LF DR BRASS	EA	1	20
LF73688	DN40	151	135	72.4	108	71.2	LF DR BRASS	EA	1	15
LF73690	DN50	174	165	90	133	86.5	LF DR BRASS	EA	1	8



Features & Benefits

- 99.9% LEAD FREE* DR BRASS
- AGA License Number: 8350 in compliance with AS4617
- Suitable for Potable Water complies with AS/NZS 4020
- Dezincification Resistance Brass complies with AS 2345
- Pressure Tested
- Full Bore Ball Valve

Application

elson LF PRESS GAS BALL VALVES are DN 15 to DN 50 two-piece DR Brass body can be used on natural GAS (NG), simulated natural gas(SNG), town gas (TG), tempered liquefied petroleum gas (TLP) and liquefied petroleum gas(LGP) in vapour phase.

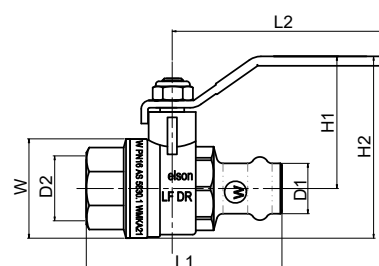
Technical Specifications

- Working Temperature Range: 1°C to 70°C
- Gas Maximum Allowable Operating Pressure (MAOP) :500kPa
- Size Range: DN15 - DN50

PRESS WATER BALL VALVE

elson LF PRESS WATER BALL VALVE LF DR BRASS L/H

CODE	Size(D1)	Size(D2)	L1	L2	H1	H2	W	FINISH	UOM	PACK QTY	CTN QTY
LF73660	DN15	Rp1/2	65.4	90	47	62.6	31.5	LF DR BRASS	EA	1	90
LF73662	DN20	Rp3/4	82.2	103.2	53.3	72.8	39	LF DR BRASS	EA	1	50



Features & Benefits

- 99.9% LEAD FREE* DR BRASS
- Watermark License Number: WMKA21922 in compliance with AS5830.1
- Suitable for Potable Water complies with AS/NZS 4020
- Dezincification Resistance Brass complies with AS 2345
- Full Bore Ball Valve
- Pressure Tested

Application

elson LF PRESS WATER BALL VALVES are DR Brass body in-line ball valves for use in plumbing water supply systems.
The valves are designed for non-buried installations operating at temperatures up to 95°C.

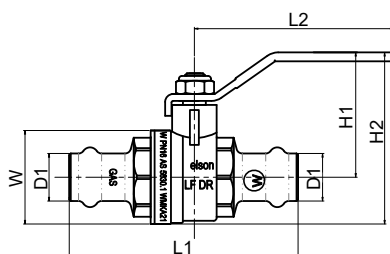
Technical Specifications

- Working Temperature Range: 1°C to 95°C
- WATER Maximum Allowable Operating Pressure (MAOP) :1600kPa
- Size Range: DN15 73660; DN20 73662

PRESS WATER BALL VALVE

elson LF PRESS WATER BALL VALVE LF DR BRASS L/H

CODE	Size(D1)	L1	L2	H1	H2	W	FINISH	UOM	PACK QTY	CTN QTY
LF73680	DN15	82	90	47	62.6	31.5	LF DR BRASS	EA	1	80
LF73682	DN20	101	103.5	53.3	72.8	39	LF DR BRASS	EA	1	50
LF73684	DN25	112	103.5	57.2	80.9	47.4	LF DR BRASS	EA	1	30
LF73686	DN32	128.5	135	65.6	94.7	58.2	LF DR BRASS	EA	1	20
LF73688	DN40	151	135	72.4	108	71.2	LF DR BRASS	EA	1	15
LF73690	DN50	174	165	90	133	86.5	LF DR BRASS	EA	1	8



Application

elson LF PRESS WATER BALL VALVES are DN15 to DN50 two-piece DR Brass body in-line ball valves for use in plumbing water supply systems.

The valves are designed for non-buried installations operating at temperatures up to 95°C.

Features & Benefits

- 99.9% LEAD FREE* DR BRASS
- Watermark License Number: WMKA21922 in compliance with AS5830.1
- Suitable for Potable Water complies with AS/NZS 4020
- Dezincification Resistance Brass complies with AS 2345
- Full Bore Ball Valve
- Pressure Tested

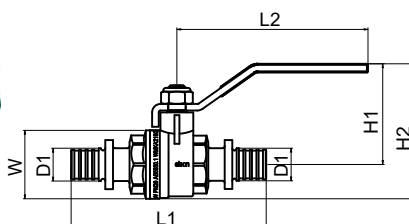
Technical Specifications

- Working Temperature Range: 1°C to 95°C
- WATER Maximum Allowable Operating Pressure (MAOP) :1600kPa
- Size Range: 15mm-50mm

BUSHPEX PULL-ON WATER BALL VALVE

elson LF BUSHPEX PULL-ON WATER BALL VALVE LF DR BRASS L/H

CODE	Size(D1)	L1	L2	H1	H2	W	FINISH	UOM	PACK QTY	CTN QTY
LF72380	DN16	90	90	47	62.6	31.5	LF DR BRASS	EA	1	25
LF72382	DN20	100	90	47	62.6	31.5	LF DR BRASS	EA	1	25
LF72384	DN25	126.5	103.5	55.3	72.8	39	LF DR BRASS	EA	1	25



Application

elson LF BUSHPEX PULL-ON WATER BALL VALVE are DN 15 to DN 25 two-piece LEAD FREE DR Brass body in-line ball valves for use in plumbing water supply systems..

The valves are designed for non-buried installations operating at temperatures up to 95°C.

Features & Benefits

- 99.9% LEAD FREE* DR BRASS
- Watermark License Number: WMKA21922 in compliance with AS5830.1
- Suitable for Potable Water complies with AS/NZS 4020
- Dezincification Resistance Brass complies with AS 2345
- Full Bore Ball Valve
- Pressure Tested

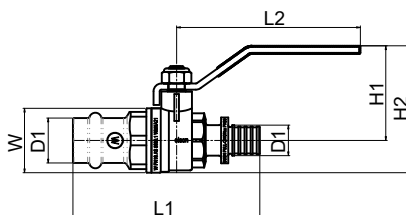
Technical Specifications

- Working Temperature Range: 1°C to 95°C
- WATER Maximum Allowable Operating Pressure (MAOP) :1600kPa
- Size Range: DN16 LF72380; DN20 LF72382; DN25 LF72384

PRESS TO BUSHPEX PULL-ON WATER BALL VALVE

elson LF PRESS TO BUSHPEX PULL-ON PEX B/V LF DR BRASS L/H

CODE	Size(D1)	L1	L2	H1	H2	W	FINISH	UOM	PACK QTY	CTN QTY
LF72390	DN15	90	90	47	62.6	31.5	LF DR BRASS	EA	1	25
LF72392	DN20	100	90	47	62.6	31.5	LF DR BRASS	EA	1	25
LF72394	DN25	115	103.5	55.3	72.8	39	LF DR BRASS	EA	1	25



Application

elson LF BUSHPEX PULL-ON WATER BALL VALVE are DN 15 to DN 25 two-piece LEAD FREE DR Brass body in-line ball valves for use in plumbing water supply systems..

The valves are designed for non-buried installations operating at temperatures up to 95°C.

Features & Benefits

- 99.9% LEAD FREE* DR BRASS
- Watermark License Number: WMKA21922 in compliance with AS5830.1
- Suitable for Potable Water complies with AS/NZS 4020
- Dezincification Resistance Brass complies with AS 2345
- Full Bore Ball Valve
- Pressure Tested

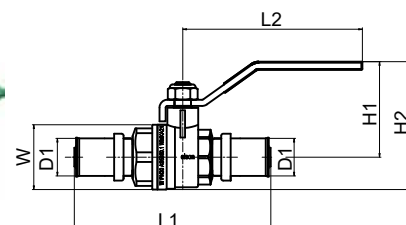
Technical Specifications

- Working Temperature Range: 1°C to 95°C
- WATER Maximum Allowable Operating Pressure (MAOP) :1600kPa
- Size Range: DN16 LF72390; DN20 LF72392; DN25 LF72394

BUSHPEX CRIMP-ON WATER BALL VALVE

elson LF BUSHPEX CRIMP-ON BALL VALVE LF DR BRASS L/H

CODE	Size(D1)	L1	L2	H1	H2	W	FINISH	UOM	PACK QTY	CTN QTY
LFv	DN16	94	90	47	62.6	31.5	LF DR BRASS	EA	1	25
LF73982	DN20	94	90	47	62.6	31.5	LF DR BRASS	EA	1	25
LF73984	DN25	94	90	47	62.6	31.5	LF DR BRASS	EA	1	25



Application

elson LF BUSHPEX CRIMP-ON WATER BALL VALVES are DN 16 to DN 25 two-piece DR Brass body in-line ball valves for use in plumbing water supply systems.

The valves are designed for non-buried installations operating at temperatures up to 70°C.

Features & Benefits

- 99.9% LEAD FREE* DR BRASS
- Watermark License Number: WMKA21922 in compliance with AS5830.1
- Suitable for Potable Water complies with AS/NZS 4020
- Dezincification Resistance Brass complies with AS 2345
- Full Bore Ball Valve
- Pressure Tested

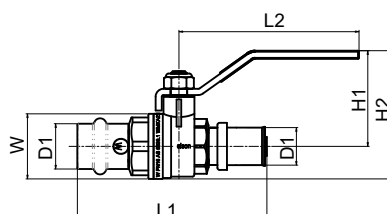
Technical Specifications

- Water Working Temperature Range: 1°C to 70°C
- WATER Maximum Allowable Operating Pressure (MAOP) : 2000kPa @ 20°C
- Size Range: DN16 LF73980; DN20 LF73982; DN25 LF73984

PRESS TO BUSHPEX CRIMP-ON WATER BALL VALVE

elson LF PRESS TO BUSHPEX CRIMP-ON PEX B/V LF DR BRASS L/H

CODE	Size(D1)	L1	L2	H1	H2	W	FINISH	UOM	PACK QTY	CTN QTY
LF73990	DN15	90	90	47	62.6	31.5	LF DR BRASS	EA	1	25
LF73992	DN20	100	90	47	62.6	31.5	LF DR BRASS	EA	1	25
LF73994	DN25	126.5	103.5	55.3	72.8	39	LF DR BRASS	EA	1	25



Features & Benefits

- 99.9% LEAD FREE* DR BRASS
- Watermark License Number: WMKA21922 in compliance with AS5830.1
- Suitable for Potable Water complies with AS/NZS 4020
- Dezincification Resistance Brass complies with AS 2345
- Full Bore Ball Valve
- Pressure Tested

Technical Specifications

- Water Working Temperature Range: 1°C to 70°C
- WATER Maximum Allowable Operating Pressure (MAOP) : 1600kPa @ 20°C
- Size Range: DN16 LF73990; DN20 LF73992; DN25 LF73994

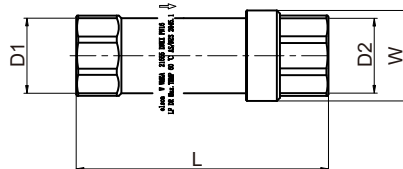
Application

elson LF BUSHPEX CRIMP-ON WATER BALL VALVES are DN 16 to DN 25 two-piece DR Brass body in-line ball valves for use in plumbing water supply systems. The valves are designed for non-buried installations operating at temperatures up to 70°C.

DUAL CHECK VALVE

elson LF DUAL CHECK VALVE LF DR BRASS F/F

CODE	Size(D1)	Size(D2)	L	W	FINISH	UOM	PACK QTY	CTN QTY
LF73010	Rp3/4	Rp3/4	123	36	LF DR BRASS	EA	1	70
LF73022	Rp1	Rp1	29.5	44.5	LF DR BRASS	EA	1	



Features & Benefits

- 99.9% LEAD FREE* DR BRASS
- Watermark Certificate Number: WMKA21655
- Suitable for Potable Water complies with AS/NZS 4020
- Dezincification Resistance Brass complies with AS 2345
- Complies with AS/NZS 2845.1-2010
- Watermark Certificate No: WMKA 21655

Technical Specifications

- Maximum Working Temperature: 60°C
- Maximum operating pressure: 1600kPa
- Size Range: DN20

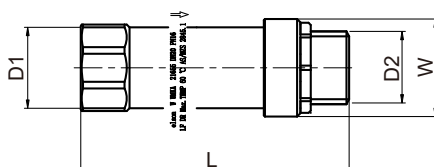
Working Principle and Application (LF73010):

- This Dual Check Valve is designed to prevent back flow in Low Hazard Applications.
- The installer should check to ensure the device is fit for purpose for the intended application.
- The Device contains two Neoperl Spring Check Valves and is not a testable back flow device.
- The Device is flow directional as indicated on the body of the valve.
- The device is serviceable with parts available: - Spare Parts Kit, Part No S73010.
- Spare Parts Kit Contains 2 x Check Valve Assemblies and 1 x End Cap O'ring.
- The device is Suitable for Vertical or Horizontal application.

DUAL CHECK VALVE

elson LF DUAL CHECK VALVE LF DR BRASS M/F

CODE	Size(D1)	Size(D2)	L	W	FINISH	UOM	PACK QTY	CTN QTY
LF73011	Rp3/4	G3/4B	100	36	LF DR BRASS	EA	1	70
LF73013	Rp3/4	R3/4	105.5	36	LF DR BRASS	EA	1	



Features & Benefits

- 99.9% LEAD FREE* DR BRASS
- Watermark Certificate Number: WMKA21655
- Suitable for Potable Water complies with AS/NZS 4020
- Dezincification Resistance Brass complies with AS 2345
- Complies with AS/NZS 2845.1-2010
- Watermark Certificate No: WMKA 21655

Working Principle and Application (LF73011):

- This Dual Check Valve is designed to prevent back flow in Low Hazard Applications.
- The installer should check to ensure the device is fit for purpose for the intended application.
- The Device contains two Neoperl Spring Check Valves and is not a testable back flow device.
- The Device is flow directional as indicated on the body of the valve.
- The device is serviceable with parts available: - Spare Parts Kit, Part No S73010.
- Spare Parts Kit Contains 2 x Check Valve Assemblies and 1 x End Cap O'ring.
- The device is Suitable for Vertical or Horizontal application.

Technical Specifications

- Maximum Working Temperature: 60°C
- Maximum operating pressure: 1600kPa
- Size Range: DN20

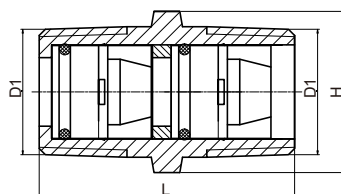
MINI DUAL CHECK VALVE

elson LF MINI DUAL CHECK VALVE LF DR BRASS MI

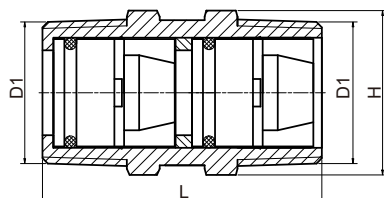
CODE	Size(D1)	Thread	L	H	FINISH	UOM	PACK QTY	CTN QTY
LF73001	DN15	R1/2	41	24.5	LF DR BRASS	EA	1	300
LF73002	DN15	R1/2	41	24.5	CHROME	EA	1	300
LF73003	DN20	R3/4	52.5	30	LF DR BRASS	EA	1	160



(LF73001 / LF73002)



(LF73003)



Features & Benefits

- 99.9% LEAD FREE* DR BRASS
- Compact design, Dual Check Valve
- NEOPERL® check valve
- Manufactured in our ISO9001 certified factory

Technical Specifications

- Maximum Operating Pressure 1200kPa
- Maximum Operating Temperature 60°C
- Material: DR Brass in compliance with AS 2345
- Threads comply with AS 1722.2
- Suitable for potable water, Comply with AS/NZS 4020
- WaterMark Certificate No. WMKA21655, Conforms with AS/NZS 2845.1

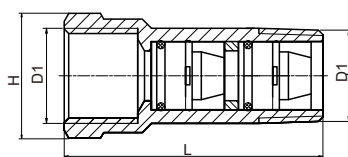
Application

The Mini Dual Check Valve provides protection to the potable water supply from contamination.

MINI DUAL CHECK VALVE

elson LF MINI DUAL CHECK VALVE LF DR BRASS M/F

CODE	Size(D1)	Thread(1)	Thread(2)	L	H	FINISH	UOM	PACK TY	CTN QTY
LF73004	DN15	Rp1/2	R1/2	57	27.5	LF DR BRASS	EA	1	180
LF73005	DN15	Rp1/2	R1/2	57	27.5	CHROME	EA	1	180
LF73006	DN20	Rp3/4	R3/4	71	33.5	LF DR BRASS	EA	1	110



Application

The Mini Dual Check Valve provides protection to the potable water supply from contamination.

Features & Benefits

- 99.9% LEAD FREE* DR BRASS
- Compact design, Dual Check Valve
- NEOPERL® check valve
- Manufactured in our ISO9001 certified factory

Technical Specifications

- Maximum Operating Pressure 1200kPa
- Maximum Operating Temperature 60°C
- Material: DR Brass in compliance with AS 2345
- Threads comply with AS 1722.2
- Suitable for potable water, Comply with AS/NZS 4020
- WaterMark Certificate No. WMKA21655, Conforms with AS/NZS 2845.1

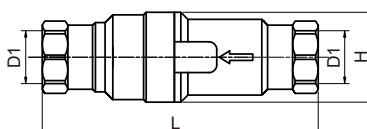
PRESSURE LIMITING VALVE

elson LF PRESSURE LIMITING VALVE FI LF DR BRASS

CODE	Size(D1)	Thread	L	H	FINISH	UOM	PACK QTY	CTN QTY
LF76135	DN15	Rp1/2	107.5	35	LF DR BRASS	EA	1	
LF76150	DN15	Rp1/2	107.5	35	LF DR BRASS	EA	1	
LF76160	DN15	Rp1/2	107.5	35	LF DR BRASS	EA	1	
LF76335	DN20	Rp3/4	108	35	LF DR BRASS	EA	1	
LF76350	DN20	Rp3/4	108	35	LF DR BRASS	EA	1	
LF76360	DN20	Rp3/4	108	35	LF DR BRASS	EA	1	

Factory set pressure: 350kPa / 500kPa / 600kPa

Flow Rate at Pressure: 50 L/Min / 75 L/Min / 80 L/Min



Application

Pressure Limiting Valves are fitted in water systems to prevent over pressure conditions. are ideal for installation with high pressure storage water heaters, water meter assemblies, water softeners etc.

Pressure Limiting Valves can also be used with domestic appliances such as dishwashers. preset maximum preventing over-pressure situations.

Features & Benefits

- 99.9% LEAD FREE* DR BRASS
- Suitable for horizontal or vertical installation
- Available in fixed outlet pressure settings
- Manufactured in our ISO9001 certified factory

Technical Specifications

- Max. Inlet Pressure 2000kPa
- Max. Inlet Temperature (Continuous) 80°C
- Material: DR Brass in compliance with AS 2345
- Threads comply with AS 1722.2
- Suitable for potable water, Comply with AS/NZS 4020
- WaterMark Certificate No. WMK26481, Conforms with AS1357.2

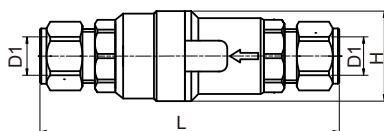
PRESSURE LIMITING VALVE

elson LF PRESSURE LIMITING VALVE C/OLIVE LF DR BRASS

CODE	Size(D1)	L	H	FINISH	UOM	PACK QTY	CTN QTY
LF76235	DN15	116	35	LF DR BRASS	EA	1	
LF76250	DN15	116	35	LF DR BRASS	EA	1	
LF76260	DN15	116	35	LF DR BRASS	EA	1	
LF76435	DN20	120	35	LF DR BRASS	EA	1	
LF76450	DN20	120	35	LF DR BRASS	EA	1	
LF76460	DN20	120	35	LF DR BRASS	EA	1	

Factory set pressure: 350kPa / 500kPa / 600kPa

Flow Rate at Pressure: 50 L/Min / 75 L/Min / 80 L/Min



Application

Pressure Limiting Valves are fitted in water systems to prevent over pressure conditions. are ideal for installation with high pressure storage water heaters, water meter assemblies, water softeners etc.

Pressure Limiting Valves can also be used with domestic appliances such as dishwashers. preset maximum preventing over-pressure situations.

Features & Benefits

- 99.9% LEAD FREE* DR BRASS
- Suitable for horizontal or vertical installation
- Available in fixed outlet pressure settings
- Manufactured in our ISO9001 certified factory

Technical Specifications

- Max. Inlet Pressure 2000kPa
- Max. Inlet Temperature (Continuous) 80°C
- Material: DR Brass in compliance with AS 2345
- Threads comply with AS 1722.2
- Suitable for potable water, Comply with AS/NZS 4020
- WaterMark Certificate No. WMK26481, Conforms with AS1357.2

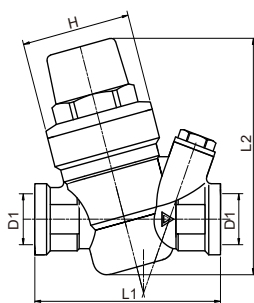
PRESSURE REDUCTION VALVE

elson LF PRESSURE REDUCTION VALVE FI LF DR BRASS

CODE	Size(D1)	Thread	L1	L2	H	FINISH	UOM	PACK QTY	CTN QTY
LF76012	DN15	Rp1/2	79	96.5	46	LF DR BRASS	EA	1	
LF76014	DN20	Rp3/4	84	96.5	46	LF DR BRASS	EA	1	

LF76012 Flow Rates: 150kPa-15 L/Min; 600kPa-60 L/Min

LF76014 Flow Rates: 150kPa-18 L/Min; 600kPa-110 L/Min



Application

Pressure Reduction Valves are fitted in water systems to moderate and stabilise mains water pressure.

The valve maintains a constant maximum outlet pressure to protect downstream installations from variations in supply pressure description. The factory set pressure of the valve is the common pressure of 500kPa, and it can also be adjusted between 150-600kPa.

Features & Benefits

- 99.9% LEAD FREE* DR BRASS
- Excellent flow rates
- Adjustable Outlet Pressure 150-600kPa
- Valve and strainer can be serviced
- Manufactured in our ISO9001 certified factory

Technical Specifications

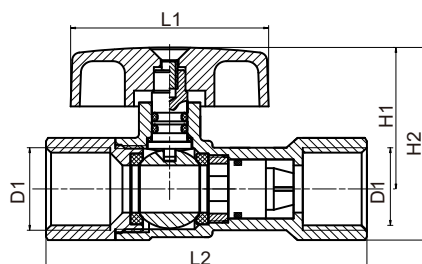
- Max. Inlet Pressure 1600kPa
- Max. Inlet Temperature (Continuous) 80°C
- Factory set pressure: 500kPa
- Outlet Pressure: 150 - 600kPa
- Material: DR Brass in compliance with AS 2345
- Threads comply with AS 1722.2
- Suitable for potable water, Comply with AS/NZS 4020
- WaterMark Certificate No. WMK26481, Conforms with AS1357.2

NON-RETURN ISOLATING VALVE

elson LF NON-RETURN ISOLATING VALVE F/F | LF DR BRASS

CODE	Size(D1)	Thread	L1	L2	H1	H2	FINISH	UOM	PACK QTY	CTN QTY
LF76020	DN15	Rp1/2	50	81	36	49	LF DR BRASS	EA	1	80
LF76022	DN20	Rp3/4	60	94	41	58	LF DR BRASS	EA	1	50

LF76020 Flow Rate at Pressure 250kPa: 70 L/Min
LF76022 Flow Rate at Pressure 250kPa: 155 L/Min



Application

Elson quality 99.9% LEAD FREE* DR BRASS non-return isolating ball valves (dual function) are suitable to meet the requirements of hot water heater installation and applications where non-return and isolating valves are required.

Features & Benefits

- 99.9% LEAD FREE* DR BRASS
- Compact design
- Integrated non-return and isolation ball valve
- NEOPERL® check valve
- Ergonomic functional robust handle
- Full flow ball with Teflon seal
- Manufactured in our ISO9001 certified factory
- Available in 15mm & 20mm elson press, copper compression, Female and flared connections
- Every valve pressure tested

Technical Specifications

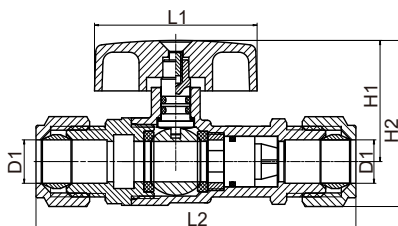
- Maximum Inlet Pressure: 1400kPa
- Maximum Inlet Temperature (Peak): 93°C
- Maximum Inlet Temperature (Continuous): 65°C
- Material: DR Brass in compliance with AS 2345
- Threads comply with AS 1722.2
- Suitable for potable water, Comply with AS/NZS 4020
- WaterMark Certificate No. WMK26481, Conforms with AS1357.1 and AS1357.2

NON-RETURN ISOLATING VALVE

elson LF NON-RETURN ISOLATING VALVE C/OLIVE LF DR BRASS

CODE	Size(D1)	L1	L2	H1	H2	FINISH	UOM	PACK QTY	CTN QTY
LF76024	DN15	50	98	36	49	LF DR BRASS	EA	1	70
LF76026	DN20	60	115	41	58	LF DR BRASS	EA	1	40

LF76024 Flow Rate at Pressure 250kPa: 70 L/Min
LF76026 Flow Rate at Pressure 250kPa: 155 L/Min



Application

Elson quality 99.9% LEAD FREE* DR BRASS non-return isolating ball valves (dual function) are suitable to meet the requirements of hot water heater installation and applications where non-return and isolating valves are required.

Features & Benefits

- 99.9% LEAD FREE* DR BRASS
- Compact design
- Integrated non-return and isolation ball valve
- NEOPERL® check valve
- Ergonomic functional robust handle
- Full flow ball with Teflon seal
- Manufactured in our ISO9001 certified factory
- Available in 15mm & 20mm elson press, copper compression, Female and flared connections
- Every valve pressure tested

Technical Specifications

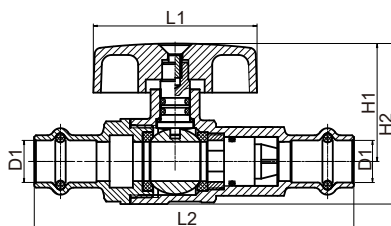
- Maximum Inlet Pressure: 1400kPa
- Maximum Inlet Temperature (Peak): 93°C
- Maximum Inlet Temperature (Continuous): 65°C
- Material: DR Brass in compliance with AS 2345
- Threads comply with AS 1722.2
- Suitable for potable water, Comply with AS/NZS 4020
- WaterMark Certificate No. WMK26481, Conforms with AS1357.1 and AS1357.2

NON-RETURN ISOLATING VALVE

elson LF NON-RETURN ISOLATING VALVE DN15 PRESS LF DR BRASS

CODE	Size(D1)	L1	L2	H1	H2	FINISH	UOM	PACK QTY	CTN QTY
LF76030	DN15	50	98	36	49	LF DR BRASS	EA	1	100

Flow Rate at Pressure 250kPa: 70 L/Min



Application

Elson quality 99.9% LEAD FREE* DR BRASS non-return isolating ball valves (dual function) are suitable to meet the requirements of hot water heater installation and applications where non-return and isolating valves are required.

Features & Benefits

- 99.9% LEAD FREE* DR BRASS
- Compact design
- Integrated non-return and isolation ball valve
- NEOPERL® check valve
- Ergonomic functional robust handle
- Full flow ball with Teflon seal
- Manufactured in our ISO9001 certified factory
- Available in 15mm & 20mm elson press, copper ompression, Female and flared connections
- Every valve pressure tested

Technical Specifications

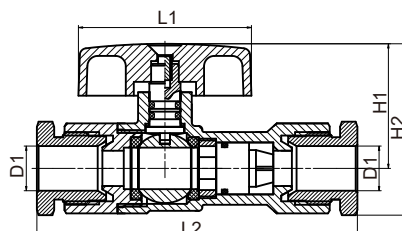
- Maximum Inlet Pressure: 1400kPa
- Maximum Inlet Temperature (Peak): 93°C
- Maximum Inlet Temperature (Continuous): 65°C
- Material: DR Brass in compliance with AS 2345
- Threads comply with AS 1722.2
- Suitable for potable water, Comply with AS/NZS 4020
- WaterMark Certificate No. WMK26481, Conforms with AS1357.1 and AS1357.2

NON-RETURN ISOLATING VALVE

elson LF NON-RETURN ISOLATING VALVE 15Ch INT FLARED LF DR BRASS

CODE	Size(D1)	L1	L2	H1	H2	FINISH	UOM	PACK QTY	CTN QTY
LF76032	DN15	50	93	36	49.5	LF DR BRASS	EA	1	70

Flow Rate at Pressure 250kPa: 70 L/Min



Application

Elson quality 99.9% LEAD FREE* DR BRASS non-return isolating ball valves (dual function) are suitable to meet the requirements of hot water heater installation and applications where non-return and isolating valves are required.

Features & Benefits

- 99.9% LEAD FREE* DR BRASS
- Compact design
- Integrated non-return and isolation ball valve
- NEOPERL® check valve
- Ergonomic functional robust handle
- Full flow ball with Teflon seal
- Manufactured in our ISO9001 certified factory
- Available in 15mm & 20mm elson press, copper ompression, Female and flared connections
- Every valve pressure tested

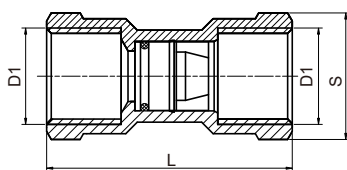
Technical Specifications

- Maximum Inlet Pressure: 1400kPa
- Maximum Inlet Temperature (Peak): 93°C
- Maximum Inlet Temperature (Continuous): 65°C
- Material: DR Brass in compliance with AS 2345
- Threads comply with AS 1722.2
- Suitable for potable water, Comply with AS/NZS 4020
- WaterMark Certificate No. WMK26481, Conforms with AS1357.1 and AS1357.2

NON-RETURN VALVE

elson LF NON-RETURN VALVE F/F LF DR BRASS

CODE	Size(D1)	Thread	L	S	FINISH	UOM	PACK QTY	CTN QTY
LF76035	DN15	Rp1/2	53	26	LF DR BRASS	EA	1	180
LF76036	DN20	Rp3/4	61.5	31.5	LF DR BRASS	EA	1	120
LF76037	DN25	Rp1	68	39.5	LF DR BRASS	EA	1	60



Features & Benefits

- 99.9% LEAD FREE* DR BRASS
- Compact design
- NEOPERL® check valve
- Maximum Inlet Temperature 99°C
- Manufactured in our ISO9001 certified factory

Technical Specifications

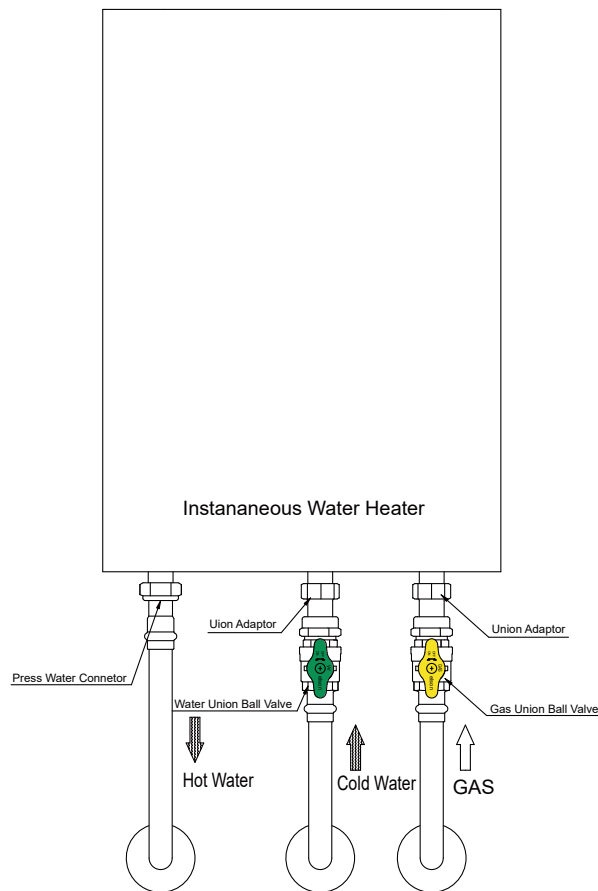
- Maximum Inlet Pressure: 1400kPa
- Maximum Inlet Temperature (Peak): 99°C
- Material: DR Brass in compliance with AS 2345
- Threads comply with AS 1722.2
- Suitable for potable water, Comply with AS/NZS 4020
- WaterMark Certificate No. WMK26481, Conforms with AS1357.1

Application

Non-Return Valves are suitable for use on water heater systems or wherever non-return functionality is required. prevent the backflow of water from a water heater to the mains line. Non-Return Valves servethe dual purpose of protecting the mains supply from contamination and prevents the loss of water that has already been heated. rated for high temperature applications (up to 99°C).

LEAD FREE* PLUMBING SOLUTIONS





elson LEAD FREE* UNION BALL VALVES continuous flow instantaneous range

Elson has engineered a range of press Lead Free* DR Brass ball valves and continuous flow kits. elson press & flared union ball valves are manufactured with precision and quality in our company owned ISO9001 certified factory.

Quality without compromise:

- Lead Free* DR Brass
- Durable robust T handle
- Full flow ball
- Manufactured for longevity with quality materials
- German formulated O-Rings

The benefits of using elson Union Lead Free DR Brass ball valves

- Fast & easy installation with continuous flow instantaneous heater kits
- Various sizes and combinations to suit your application
- Lead Free* DR Brass Health benefits for humans and our environment
- The Continuous flow instantaneous heater kits includes ball valves for both gas and water with an outlet fitting in various types and combinations

Technical Information

- Watermark Certificate WMKA21922, Conforms with AS5830.1
- AS/NZS 4020 Compliant
- Flared Water Ball Valve 2500 kPa Rated
- Flared Gas Ball Valve Body 1050 kPa Rated
- Gas Ball Valve Maximum Temperature 95 °C
- AGA Certificate AGA8350, Conforms with AS4617
- Press Water Ball Valve 1600 kPa Rated
- Press Gas Ball Valve Body 500 kPa Rated
- Water Ball Valve Maximum Temperature 99 °C

* Elson Lead Free copper alloy products are 99.9% Lead Free and contain less than 0.1% Lead by weight.



Code	Description	GAS VALVE	WATER VALVE	WATER OUTLET
LF73720	elson LF PRESS UBV KIT GAS INSTANTANEOUS WATER HEATER LF DR BRASS G1/2 FI x DN15	G1/2 FI TO DN15 PRESS	G1/2 FI TO DN15 PRESS	G1/2 FI x DN15
				




Code	Description	GAS VALVE	WATER VALVE	WATER OUTLET
LF73722	elson LF PRESS UBV KIT GAS INSTANTANEOUS WATER HEATER LF DR BRASS G3/4 FI x DN20	G3/4 FI TO DN20 PRESS	G3/4 FI TO DN20 PRESS	G3/4 FI x DN20
				

Code	Description	GAS VALVE	WATER VALVE	WATER OUTLET
LF73723	elson LF PRESS UBV KIT GAS INSTANTANEOUS WATER HEATER LF DR BRASS G3/4 FI x DN20 GAS & G3/4 FI x DN15 WATER	G3/4 FI TO DN20 PRESS	G3/4 FI TO DN15 PRESS	G3/4 FI x DN15
				

Code	Description	GAS VALVE	WATER VALVE	WATER OUTLET
LF73724	elson LF PRESS UBV KIT GAS INSTANTANEOUS WATER HEATER LF DR BRASS G3/4 FI x DN20 GAS & G1/2 FI & DN15 WATER	G3/4 FI TO DN20 PRESS	G1/2 FI TO DN15 PRESS	G1/2 FI x DN15
				

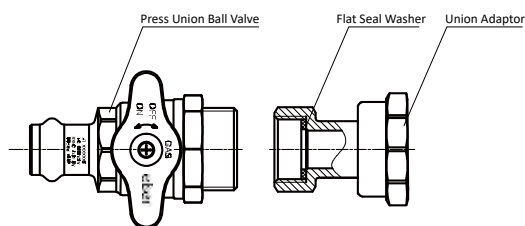
Code	Description	GAS VALVE	WATER VALVE	WATER OUTLET
LF73725	elson LF PRESS UBV KIT GAS INSTANTANEOUS WATER HEATER LF DR BRASS G3/4 FI x DN15 GAS & G1/2 FI x DN15 WATER	G3/4 FI TO DN15 PRESS	G1/2 FI TO DN15 PRESS	G1/2 FI x DN15
				

Code	Description	GAS VALVE	WATER VALVE	WATER OUTLET
LF73721	elson LF PRESS UBV KIT GAS INSTANTANEOUS WATER HEATER LF DR BRASS G3/4 FI x DN15	G3/4 FI TO DN15 PRESS	G3/4 FI TO DN15 PRESS	G3/4 FI x DN15
				

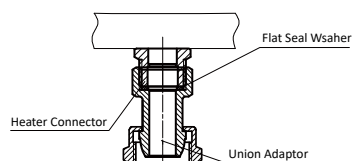
Code	Description	GAS VALVE	WATER VALVE	WATER OUTLET
		G3/4 FI TO DN15 PRESS	G3/4 FI TO DN15 PRESS	G3/4 FI x DN15
LF73693	elson LF PRESS BALL VALVE KIT GAS INSTANTANEOUS WATER LF DR BRASS G3/4 FI L/NUT x DN15 PRESS			

Elson Lead Free* Press union ball valve installation guide for instantaneous and continuous flow hot water heaters

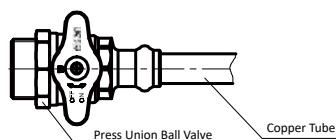
Press union ball valve components comprise of 1 x press union ball valve with 1 x union adapter including 1 x flat seal washer



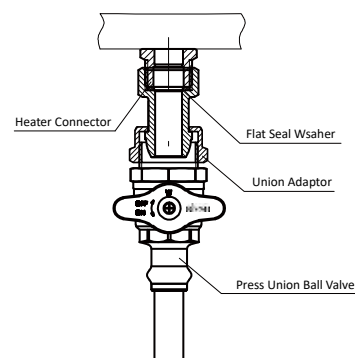
Step 1: Install flat seal washer in union adapter nut. Attach to heater connector and tighten.



Step 2: Deburr copper tube internally and externally. Measure insertion depth then mark tube. Insert copper tube into press ball valve till insertion depth mark. Use an elson press approved pressing tool and jaw to complete joint. Ensure copper tube is long enough for connection to ball valve union.



Step 3: Install pressed union ball valve to union adaptor on heater in correct operating position then tighten to seal. Ensure all joints are firmly sealed and valve has not moved out of position during installation.



Note: This item is Loose Nut Ball Valve.

Code	Description	GAS VALVE	WATER VALVE	WATER OUTLET
LF73726	elson LF FLARED UBV KIT GAS INSTANTANEOUS WATER HEATER LF DR BRASS G1/2 FI x 15Cn	G1/2 FI TO 15Cn FLARED	G1/2 FI TO 15Cn FLARED	G1/2 FI x 15Cn
				

Code	Description	GAS VALVE	WATER VALVE	WATER OUTLET
LF73728	elson LF FLARED UBV KIT GAS INSTANTANEOUS WATER HEATER LF DR BRASS G3/4 FI x 20Cn	G3/4 FI TO 20Cn FLARED	G3/4 FI TO 20Cn FLARED	G3/4 FI x 20Cn
				

Code	Description	GAS VALVE	WATER VALVE	WATER OUTLET
LF73729	elson LF FLARED UBV KIT GAS INSTANTANEOUS WATER HEATER LF DR BRASS G3/4 FI x 20Cn GAS & G3/4 FI x 15Cn WATER	G3/4 FI TO 20Cn FLARED	G3/4 FI TO 15Cn FLARED	G3/4 FI x 15Cn
				

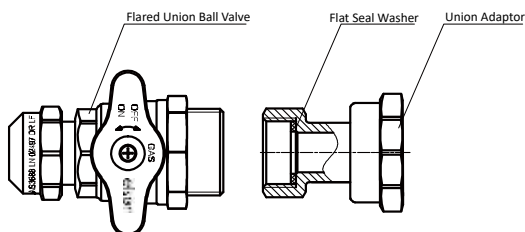
Code	Description	GAS VALVE	WATER VALVE	WATER OUTLET
LF73730	elson LF FLARED UBV KIT GAS INSTANTANEOUS WATER HEATER LF DR BRASS G3/4 FI x 20Cn GAS & G1/2 FI x 15Cn WATER	G3/4 FI TO 20Cn FLARED	G1/2 FI TO 15Cn FLARED	G1/2 FI x 15Cn
				

Code	Description	GAS VALVE	WATER VALVE	WATER OUTLET
LF73731	elson LF FLARED UBV KIT GAS INSTANTANEOUS WATER HEATER LF DR BRASS G3/4 FI x 15Cn GAS & G1/2 FI x 15Cn WATER	G3/4 FI TO Cn15 FLARED	G1/2 FI TO 15Cn FLARED	G1/2 FI x 15Cn
				

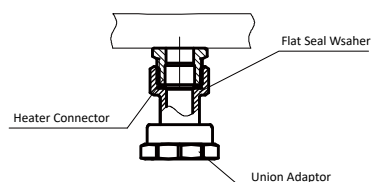
Code	Description	GAS VALVE	WATER VALVE	WATER OUTLET
LF73727	elson LF FLARED UBV KIT GAS INSTANTANEOUS WATER HEATER LF DR BRASS G3/4 FI x 15Cn	G3/4 FI TO Cn15 FLARED	G3/4 FI TO Cn15 FLARED	G3/4 FI x 15Cn
				

Elson Lead Free* Flared union ball valve installation guide for instantaneous and continuous flow hot water heaters

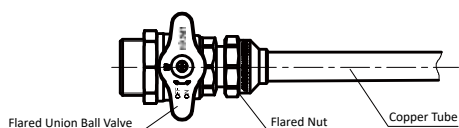
Flared union ball valve components comprise of 1 x flared union ball valve with 1 x union adaptor including 1 x flat seal washer



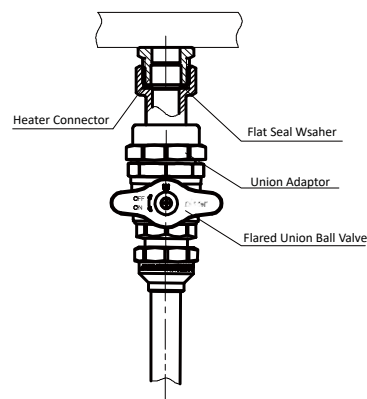
Step 1: Install flat seal washer in union adaptor nut. Attach to heater connector and tighten.



Step 2: Slide flared nut over copper tube. Use a copper flaring tool to flare the end of copper tube. Connect flared copper tube to union ball valve and tighten.



Step 3: Install flared union ball valve to union adaptor on heater in correct operating position then tighten to seal. Ensure all joints are firmly sealed and valve has not moved out of position during installation.



Elson Australasia Pty Ltd – Terms & Conditions of Trade

1. **Definitions**
1.1 "Contract" means the terms and conditions contained herein, together with any quotation, order, invoice or other document or amendments expressed to be supplementary to this Contract.
1.2 "Elson Aust" means Elson Australasia Pty Ltd, its successors and assigns or any person acting on behalf of and with the authority of Elson Australasia Pty Ltd.
1.3 "Customer" means the person(s), entity or any person acting on behalf of and with the authority of the Customer requesting Elson Aust to provide the Services as specified in any proposal, quotation, order, invoice or other document, and:
(a) if there is more than one Customer, is a reference to each Customer jointly and severally; and
(b) if the Customer is a partnership, shall bind each partner jointly and severally; and
(c) if the Customer is a part of a Trust, shall be bound in their capacity as a trustee; and
(d) includes the Customer's executors, administrators, successors and permitted assigns.
1.4 "Goods" means all Goods or Services supplied by Elson Aust to the Customer at the Customer's request from time to time (where the context so permits the terms "Goods" or "Services" shall be interchangeable for the other).
1.5 "Confidential Information" means information of a confidential nature whether oral, written or in electronic form including, but not limited to, this Contract, other party's intellectual property, operational information, know-how, trade secrets, financial and commercial affairs, contracts, client information (including but not limited to, "Personal Information" such as: name, address, D.O.B, occupation, driver's license details, electronic contact (email, Facebook or Twitter details), medical insurance details or next of kin and other contact information (where applicable), previous credit application (credit history) and pricing details.
1.6 "Cookies" means small files which are stored on a user's computer. They are designed to hold a modest amount of data (including Personal Information) specific to a particular client and website, and can be accessed either by the web server or the client's computer. **If the Customer does not wish to allow Cookies to operate in the background when making enquiries from the website, then the Customer shall have the right to enable / disable the Cookies first by selecting the option to enable / disable provided on the website, prior to ordering Goods via the website.**
1.7 "Price" means the Price payable (plus any GST where applicable) for the Goods as agreed between Elson Aust and the Customer in accordance with clause 5 below.
1.8 "GST" means the Goods and Services Tax as defined within the "A New Tax System (Goods and Services Tax) Act 1999" (Cth).
2. **Acceptance**
2.1 The Customer is taken to have exclusively accepted and is immediately bound, jointly and severally, by these terms and conditions if the Customer places an order for or accepts Delivery of the Goods.
2.2 In the event of any inconsistency between the terms and conditions of this Contract and any other prior document or schedule that the parties have entered into, the terms of this Contract shall prevail.
2.3 Any amendment to the terms and conditions contained in this Contract may only be amended in writing by the consent of both parties.
2.4 The Customer acknowledges that the supply of Goods on credit shall not take effect until the Customer has completed a credit application with Elson Aust and it has been approved with a credit limit established by the Customer.
2.5 In the event that the supply of Goods request exceeds the Customer's credit limit and/or the account exceeds the payment terms, Elson Aust reserves the right to refuse Delivery.
2.6 All literature, samples, specifications, submitted by the Customer to Elson Aust, illustrative and in any way of a general description of Goods only in accordance with industry standards. Any descriptions, dimensions or specifications contained in catalogues and other advertising material while being as accurate as possible, do not constitute a warranty or representation that it is to supply. Elson Aust will not accept liability to the Customer for quality of Goods which comply with accepted industry standards.
2.7 The Customer acknowledges and accepts that the supply of Goods for accepted orders may be subject to availability and, if, for any reason, Goods are not or cease to be available, Elson Aust reserves the right to vary the Price by alternative Goods as per clause 5.2, subject to prior confirmation and agreement of both parties.
2.8 The Customer acknowledges and accepts that the Minimum Order for the following areas is:
(a) one hundred & twenty dollars (\$120), for Sydney, Wollongong, Newcastle and Central Coast;
(b) one hundred and eighty dollars (\$180), for Australian Capital Territory, Adelaide, Brisbane, Gold Coast, Melbourne, Perth, Sunshine Coast;
(c) three hundred dollars (\$300), for Victoria Country, South Queensland Country (up to Bundaberg); and
(d) six hundred dollars (\$600), for Western Australia, Tasmania, South Australia Country, North Queensland Country.
2.9 Orders that do not meet the required Minimum Order (in accordance with clause 2.8) will be charged in addition to the Price the cost of delivery from Elson Aust National Distribution Centre to the Customer delivery address. Orders that equal or exceed the Minimum Order required will be exempt from these delivery costs.
2.10 Electronic signatures shall be deemed to be accepted by either party providing that the parties have complied with Section 9 of the Electronic Transactions Act 2000 and have made other applicable provisions of that Act or any Regulations referred to in that Act.
3. **Errors and Omissions**
3.1 The Customer acknowledges and accepts that Elson Aust shall, without prejudice, accept no liability in respect of any alleged or actual error(s) and/or omission(s):
(a) resulting from an inadvertent mistake made by Elson Aust in the formation and/or administration of the Contract; and/or
(b) contained in/omitted from any literature (hard copy and/or electronic) supplied by Elson Aust in respect of the Services.
3.2 In the event such an error and/or omission occurs in accordance with clause 3.1, and is not attributable to the negligence and/or willful misconduct of Elson Aust; the Customer shall not be entitled to treat this Contract as repudiated nor render it invalid.
4. **Change in Control**
4.1 The Customer shall give Elson Aust not less than fourteen (14) days prior written notice of any proposed change of ownership of the Customer and/or any other change in the Customer's details (including but not limited to, changes in the Customer's name, address, contact phone or fax number, change of ownership or control). The Customer shall remain liable for any loss incurred by Elson Aust as a result of the Customer's failure to comply with this clause.
5. **Price and Payment**
5.1 At Elson Aust's sole discretion, the Price shall be either:
(a) as indicated on any invoice provided by Elson Aust to the Customer; or
(b) the Price as at the date of Delivery of the Goods according to Elson Aust's current price list; or
(c) Elson Aust's quoted price (subject to any clause 5.2) which will be valid for the period stated in the quotation or otherwise for a period of thirty (30) days.
5.2 Elson Aust reserves the right to change the Price if a variation to Elson Aust's quotation is requested. Any variation from the plan of scheduled Services or specifications of the Goods which are beyond Elson Aust's control (including, but not limited to, any variation as a result of increases to Elson Aust in the cost of labour, materials or overseas transactions that may increase as a consequence of variations in foreign currency rates of exchange and/or international freight and insurance charges, or unforeseen circumstances), or during the course of the Services the Goods are not or cease to be available from Elson Aust third party suppliers, then Elson Aust reserves the right to provide alternate Goods. Variations will be charged on the basis of Elson Aust's current price list. The Customer shall be notified in writing, and shown as variations on Elson Aust's invoice. The Customer shall be required to respond to any variation submitted by Elson Aust within ten (10) working days. Failure to do so will entitle Elson Aust to add the cost of the variation to the Price. Payment for all variations must be made in full at the time of their completion.
5.3 Time for payment for the Goods being of the essence, the Price will be payable by the Customer on the date specified by Elson Aust. Payment may be made:
(a) by way of instalments/progress payments in accordance with Elson Aust's payment schedule; the date specified on any invoice or other form as being the date for payment; or
(b) failing any notice to the contrary, the date which is thirty (30) days following the date of any invoice given to the Customer by Elson Aust.
5.4 Payment may be made by cheque, bank cheque, electronic/on-line banking, credit card (a surcharge may apply per transaction), or by any other method as agreed to between the Customer and Elson Aust.
5.5 Rebates paid by Elson Aust or deducted at time of payment are at the discretion of Elson Aust and may not be honoured if the account is in arrears and/or not within the terms.
5.6 Elson Aust may in its discretion allocate any payment received from the Customer towards any invoice that Elson Aust determines and may do so at the time of receipt or at any time afterwards. On any default by the Customer Elson Aust may re-allocate any payments previously received and allocated, in the order of priority, to the payment of any outstanding invoices. The Customer shall be allocated in such manner as preserves the maximum value of Elson Aust's Purchase Money Security Interest (as defined in the PPSA) in the Goods.
5.7 The Customer shall not be entitled to set off against, or deduct from the Price, any sums owed or claimed to be owed to the Customer by Elson Aust nor to withhold payment of any invoice because part of that invoice is in dispute.
5.8 Unless otherwise stated the Price does not include GST. In addition to the Price, the Customer must pay to Elson Aust the amount equal to any GST Elson Aust must pay for the supply by Elson Aust under this or any other Contract for the sale of the Goods. The Customer must pay GST, without deduction or set off of any other amounts, at the same time and on the same basis as the Customer pays the Price. In addition, the Customer must pay any other taxes and duties that may be applicable in addition to the Price except where they are expressly included in the Price.
6. **Delivery of Goods**
6.1 Delivery ("Delivery") of the Goods is taken to occur at the time that:
(a) the Customer or the Customer's nominated carrier takes possession of the Goods at Elson Aust's address; or
(b) Elson Aust (or Elson Aust's nominated carrier) delivers the Goods to the Customer's nominated address even if the Customer is not present at the address.
6.2 At Elson Aust's sole discretion, the cost of Delivery is either included in the Price or is in addition to the Price.
6.3 Elson Aust may deliver the Goods in separate instalments. Each separate instalment shall be invoiced and paid in accordance with the provisions in these terms and conditions.
6.4 Any time specified for Delivery of the Goods is an estimate only. The Customer must take Delivery by receipt or collection of the Goods whenever they are tendered for Delivery. Elson Aust will not be liable for any loss or damage incurred by the Customer as a result of delivery being late. In the event of the Customer failing to take Delivery of the Goods as arranged then Elson Aust shall be entitled to charge a reasonable fee for redelivery and/or storage.
7. **Risk of damage to or loss of the Goods passes to the Customer on Delivery and the Customer must insure the Goods on or before Delivery.**
7.1 If any of the Goods are damaged or destroyed following Delivery but prior to ownership passing to the Customer, Elson Aust is entitled to receive all insurance proceeds payable for the Goods. The production of these terms and conditions by Elson Aust is sufficient evidence of Elson Aust's rights to receive the insurance proceeds without the need for any person dealing with Elson Aust to make further enquiries.
7.2 If the Customer requests Elson Aust to leave Goods outside Elson Aust's premises for collection or to deliver the Goods to an unattended location, then such Goods shall be left at the Customer's sole risk.
7.3 The Customer acknowledges that it is their responsibility to ensure that all Goods, plant or equipment which Elson Aust is to supply are of the correct type, size, standard, quality, colour and finish and that all relevant Australian and/or local statutory requirements, and all other requirements, are as specified in the specifications, drawings and plans upon which Elson Aust based the quotation on and therefore, the Customer agrees to indemnify Elson Aust against any costs incurred by Elson Aust in rectifying such errors if required.
8. **Title**
8.1 Elson Aust and the Customer agree that ownership of the Goods shall not pass until:
(a) the Customer has paid Elson Aust all amounts owing to Elson Aust; and
(b) the Customer has met all of its other obligations to Elson Aust.
8.2 Receipt by Elson Aust of any form of payment other than cash shall not be deemed to be payment until that form of payment has been honoured, stored or recognised.
8.3 It is further agreed that, until ownership of the Goods passes to the Customer in accordance with clause 8.1:
(a) the Customer is only a bailee of the Goods and must return the Goods to Elson Aust on request; the Customer holds the benefit of the Customer's insurance of the Goods on trust for Elson Aust and must pay to Elson Aust the proceeds of any insurance in the event of the Goods being lost, damaged or destroyed;
(b) the Customer must not sell, dispose, or otherwise part with possession of the Goods other than in the ordinary course of business and for market value. If the Customer sells, disposes or parts with possession of the Goods then the Customer must hold the proceeds of any such act on trust for Elson Aust and must pay or deliver the proceeds to Elson Aust on demand;
(c) the Customer should not convert or process the Goods or intermix them with other goods but if the Customer does so then the Customer holds the resulting product on trust for the benefit of Elson Aust and must sell, dispose of or return the resulting product to Elson Aust as it so directs; the Customer irrevocably authorises Elson Aust to enter any premises where Elson Aust believes the Goods are kept and recover possession of the Goods;
(d) Elson Aust may recover possession of any goods in transit whether or not Delivery has occurred; the Customer shall not charge or grant an encumbrance over the Goods nor grant or otherwise give away any interest in the Goods while they remain the property of Elson Aust;
(e) Elson Aust may commence proceedings against the Customer in respect of the Goods sold notwithstanding that ownership of the Goods has not passed to the Customer.
9. **Personal Property Securities Act 2009 ("PPSA")**
9.1 The Customer acknowledges and agrees that this Contract, security agreement, and security interest has the meaning given to it by the PPSA.
9.2 Upon assenting to these terms and conditions in writing the Customer acknowledges and agrees that the Customer is creating a security interest in the Goods for the purposes of the PPSA and creates a security interest in all Goods and/or collateral (account) – being a monetary obligation of the Customer to Elson Aust for Services – that have previously been supplied and that will be supplied in the future by Elson Aust to the Customer.
9.3 The Customer undertakes to:
(a) promptly sign any further documents and/or provide any further information (such information to be complete, accurate and up-to-date in all respects) which Elson Aust may reasonably require in order to register a financing statement or financing charge statement in relation to a security interest on the Personal Property Securities Register;
(b) (i) register any document required to be registered by the PPSA; or
(ii) correct a defect in a statement referred to in clause 9.3(a)(i) or 9.3(a)(ii);
(c) indemnify, and upon demand reimburse, Elson Aust for all expenses incurred in registering a security interest on the Personal Property Securities Register in relation to the Goods and/or collateral established by the PPSA or releasing any Goods charged thereby;
(d) not register a financing charge statement in respect of a security interest without the prior written consent of Elson Aust;
(e) not register a document to be registered, a financing statement or a financing charge statement in relation to the Goods and/or collateral (account) in favour of a third party without the prior written consent of Elson Aust;
(f) not register a document of any material change in its business practices of selling the Goods which would result in a change in the nature of proceeds derived from such sales;
(g) Elson Aust and the Customer agree that sections 96, 115 and 125 of the PPSA do not apply to the Goods created by these terms and conditions;
(h) The Customer waives their rights to receive notices under sections 95, 118, 121(4), 130, 132(3)(d) and 132(4) of the PPSA;
(i) the Customer waives their rights as a grantor and/or a debtor under sections 142 and 143 of the PPSA.
9.4 Unless otherwise agreed to in writing by Elson Aust, the Customer waives their right to receive a written statement in accordance with section 142 of the PPSA.
9.5 The Customer must unconditionally ratify any actions taken by Elson Aust under clauses 9.3 to 9.5.
9.6 Subject to any express provisions to the contrary (including those contained in clause 9), in these terms and conditions is intended to have the effect of contracting out of any of the provisions of the PPSA.
10. **Security and Charge**
10.1 The Customer and Elson Aust agree to supply the Goods, the Customer charges all of its rights, title and interest (whether joint or several) in any land, realty or other assets capable of being charged, owned by the Customer either now or in the future, to secure the performance of this Contract and its obligations under these terms and conditions (including, but not limited to, the payment of any money).
10.2 The Customer indemnifies Elson Aust from and against all Elson Aust's costs and disbursements including legal costs on a solicitor and own client basis incurred in exercising Elson Aust's rights under this clause.
10.3 The Customer irrevocably appoints Elson Aust and each director of Elson Aust as the Customer's true and lawful attorneys to perform all necessary acts to give effect to the provisions of this clause, including, but not limited to, signing any documents on the Customer's behalf.
11. **Defects, Warranties and Returns, Complaint and Consumer Act 2000 (CCA)**
11.1 The Customer must inspect the Goods on Delivery and must within seven (7) days of Delivery notify Elson Aust in writing of any defects, shortages in quantity, or failure to comply with the description or quote. The Customer must notify any other alleged defect in the Goods as soon as reasonably possible after any such defect becomes evident. Upon such notification the Customer must allow Elson Aust to inspect the Goods.
11.2 Under applicable State, Territory and Commonwealth Law (including, without limitation the CCA), certain statutory implied guarantees and warranties (including, without limitation the statutory implied guarantee under the CCA) may be implied into these terms and conditions (**Non-Excluded Guarantees**).
11.3 Elson Aust acknowledges that nothing in these terms and conditions purports to modify or exclude the Non-Excluded Guarantees.
11.4 Except as expressly set out in these terms and conditions or in respect of the Non-Excluded Guarantees, Elson Aust makes no warranties or other representations under these terms and conditions including but not limited to the quality or suitability of the Goods. Elson Aust's liability in respect of these warranties is limited to the fullest extent permitted by law.
11.5 If the Customer is a consumer within the meaning of the CCA, Elson Aust's liability is limited to the extent permitted by section 54A of Schedule 2.
11.6 If the Customer is required to replace the Goods under this clause or the CCA, but is unable to do so, Elson Aust may refund any money the Customer has paid for the Goods.
11.7 If the Customer is not a consumer within the meaning of the CCA, Elson Aust's liability for any defect or damage in the Goods is:
(a) limited to the value of any express warranty or warranty card provided to the Customer by Elson Aust at Elson Aust's sole discretion;
(b) in any warranty to which Elson Aust is entitled, if Elson Aust did not manufacture the Goods;
(c) otherwise negated absolutely.
11.8 Subject to this clause 11, returns will only be accepted provided that:
(a) the Customer has complied with the provisions of clause 11.1; and
(b) Elson Aust has agreed that the Goods are defective; and
(c) the Goods are returned within a reasonable time at the Customer's cost (if that cost is not significant); and
(d) the Goods are returned in as close a condition to that in which they were delivered as is possible.
11.9 Notwithstanding clauses 11.1 to 11.8 but subject to the CCA, Elson Aust shall not be liable for any defect or damage which may be caused or partly caused by or arise as a result of:
(a) the Customer failing to properly maintain or store any Goods;
(b) the Customer using the Goods for any purpose other than that for which they were designed;
(c) the Customer not following the use of any Goods as they become apparent or should have become apparent to a reasonably prudent operator or user;
(d) the Customer failing to follow any instructions or guidelines provided by Elson Aust;
(e) fair wear and tear, any accident, or act of God.
11.10 Elson Aust may in its absolute discretion accept non-defective Goods for return in which case Elson Aust may require the Customer to pay handling fees of up to fifteen percent (15%) of the value of the returned Goods plus any freight costs.
11.11 Notwithstanding anything contained in this clause if Elson Aust is required by a law to accept a return then Elson Aust will only accept a return on the conditions imposed by that law.
12. **Intellectual Property**
12.1 Where Elson Aust has designed, drawn or developed Goods for the Customer, then the copyright in any designs and drawings and documents shall remain the property of Elson Aust. Under no circumstances may such designs, drawings and documents be used without the express written approval of Elson Aust.
12.2 The Customer warrants that all designs, specifications or instructions given to Elson Aust will not cause Elson Aust to infringe any patent, registered design or trademark in the execution of the Customer's order and the Customer agrees to indemnify Elson Aust against any action taken by a third party against Elson Aust in respect of any such infringement.
12.3 The Customer agrees that Elson Aust may (at no cost) use for the purposes of marketing or entry into any competition, any documents, designs, drawings or Goods which Elson Aust has created to create the Customer's consent.
13. **Default and Consequences of Default**
13.1 Interest on overdue invoices shall accrue daily from the payment becomes due, until payment is received, at a rate of two and a half percent (2.5%) per calendar month (and at Elson Aust's sole discretion such interest shall compound monthly at such a rate) after as well as before any judgment.
13.2 Where Elson Aust owes Elson Aust any money the Customer shall indemnify Elson Aust from and against all costs and disbursements incurred by Elson Aust in recovering the debt (including but not limited to internal administration fees, legal costs on a solicitor and own client basis, Elson Aust's contract defence costs and bank charges fees).
13.3 Further to any other rights or remedies Elson Aust may have under this Contract, if a Customer has made payment to Elson Aust, and the transaction is subsequently reversed, the Customer shall be liable for the amount of the reversed transaction, in addition to any further costs incurred by Elson Aust under this clause 13 where it can be proven that such reversal is found to be illegal, fraudulent or in contravention to the Customer's obligations under this Contract.
13.4 Without prejudice to Elson Aust's other remedies at law Elson Aust shall be entitled to cancel all or any order of the Customer where the Customer fails to pay any amounts owing to Elson Aust shall, whether or not due for payment, become immediately payable if:
(a) any money payable to Elson Aust becomes overdue, or in Elson Aust's opinion the Customer is unable to make a payment when it is due;
(b) the Customer has exceeded any applicable credit limit provided by Elson Aust;
(c) the Customer becomes insolvent, commences or is involved in any liquidation, receivership or other insolvency proceedings, or is a party to any arrangement or agreement with creditors, or makes an assignment for the benefit of creditors, or enters into an arrangement with creditors, or convenes a meeting with its creditors or proposes or enters into an arrangement with creditors, or makes an assignment for the benefit of its creditors; or
(d) a receiver or liquidator (provisional or otherwise) or similar person is appointed in respect of the Customer or any asset of the Customer.
14. **Cancellation**
14.1 Without prejudice to any other remedies Elson Aust may have, if at any time the Customer is in breach of any obligation (including those relating to payment) under these terms and conditions Elson Aust may suspend or terminate the supply of Goods to the Customer. Elson Aust will not be liable to the Customer for any loss or damage the Customer suffers because Elson Aust has exercised its rights under this clause.
14.2 Elson Aust may cancel any Contract to which these terms and conditions apply or cancel Delivery of Goods at any time before the Goods are delivered by giving written notice to the Customer. On giving such notice Elson Aust shall repay to the Customer any money paid by the Customer for the Goods. Elson Aust shall not be liable for any loss or damage whatsoever arising from such cancellation.
14.3 In the event that the Customer cancels Delivery of Goods the Customer shall be liable for any and all loss incurred (whether direct or indirect) by Elson Aust as a direct result of the cancellation (including, but not limited to, any loss of profit).
14.4 Cancellation of orders for Goods made to the Customer's specifications, or for non-stockist items, will definitely not be accepted once production has commenced, or an order has been placed.
15. **Privacy Policy**
15.1 All emails, documents, images or other recorded information held or used by Elson Aust is Personal Information, as defined and referred to in clause 15.3, and therefore considered Confidential Information. Elson Aust acknowledges its obligation in relation to the handling, use, disclosure and processing of Personal Information pursuant to the Privacy Act 1988 ("the Act") including the Part IIC of the Act being Privacy Amendment (Notifiable Data Breaches) Act 2017 (and) and any statutory requirements, where relevant in a European Economic Area ("EEA") under the EU Data Privacy Laws (including the General Data Protection Regulation ("GDPR") (collectively, "EU Data Privacy Laws"). Elson Aust acknowledges that in the event it becomes aware of a data breach or data leak or data loss or data compromise of the Personal Information held by Elson Aust that may result in serious harm to the Customer, Elson Aust will notify the Customer in accordance with the Act and/or the GDPR. Any release of such Personal Information must be approved by the Customer by written consent, unless subject to an operation of law.
15.2 Notwithstanding clause 15.1, privacy limitations will extend to Elson Aust in respect of Cookies where transactions for purchases transpire directly from Elson Aust's website. Elson Aust agrees to display reference to such Cookies and/or similar tracking technologies, such as pixels and web beacons (if applicable), such technology allows the collection of Personal Information such as the Customer's:
(a) IP address, browser, email client type and other similar details;
(b) tracking website usage and traffic; and
(c) reports are available to Elson Aust when Elson Aust sends an email to the Customer, so Elson Aust can monitor and review that information ("collectively Personal Information").
15.3 In order to enable / disable the collection of Personal Information by way of Cookies, the Customer shall have the right to enable / disable the Cookies first by selecting the option to enable / disable, provided on the website prior to proceeding with a purchase/order via Elson Aust's website.
15.4 The Customer agrees for Elson Aust to obtain from a credit reporting body (CRB) a credit report containing personal credit information (e.g. name, address, D.O.B, occupation, driver's license details, electronic contact (email, Facebook or Twitter details), medical insurance details or next of kin and other contact information (where applicable), previous credit applications, credit history) about the Customer in relation to credit provided by Elson Aust.
15.5 The Customer agrees that Elson Aust may exchange information about the Customer with those credit providers and with related body corporates for the following purposes:
(a) to assess an application by the Customer; and/or
(b) to provide a default by the Customer; and/or
(c) to exchange information with other credit providers as to the status of this credit account, where the Customer is in default with other credit providers; and/or
(d) to assess the creditworthiness of the Customer including the Customer's repayment history in the preceding two (2) years.
15.6 The Customer consents to Elson Aust being given a consumer credit report to collect overdue payment on commercial credit.
15.7 The Customer agrees that personal credit information provided may be used and retained by Elson Aust for the following purposes (and for other agreed purposes or required by):
(a) the provision of Goods; and/or
(b) analysis, verification and/or checking the Customer's credit, payment and/or status in relation to the provision of Goods; and/or
(c) processing of any payment instructions, direct debit facilities and/or credit facilities requested by the Customer;
(d) enabling the collection of amounts outstanding in relation to the Goods.
15.8 The Customer may give information about the Customer to a CRB for the following purposes:
(a) to obtain a credit report;
(b) to allow the CRB to create or maintain a credit information file about the Customer including credit history.
15.9 The information given to the CRB may include:
(a) Personal Information as outlined in 15.3 above;
(b) name of the credit provider and that Elson Aust is a current credit provider to the Customer;
(c) type of the credit provider is a licensee;
(d) type of consumer credit;
(e) details concerning the Customer's application for credit or commercial credit (e.g. date of commencement/termination of the credit account and the amount requested);
(f) details of any outstanding amounts or payments due, including any repayments or outstanding amounts which are overdue by more than sixty (60) days and for which written notice for request of payment has been made and debt recovery action commenced or alternatively that the Customer has been given an overdue notice and Elson Aust has been paid or otherwise discharged and all details surrounding that discharge (e.g. dates of payments).
16. **Service of Notice**
16.1 Information that, in the opinion of Elson Aust, the Customer has committed a serious credit default, shall be given to the Customer's overdraft payment is equal to or more than one hundred and fifty dollars (\$150).
16.2 The Customer shall have the right to request (by e-mail from Elson Aust):
(a) a copy of the Personal Information about the Customer retained by Elson Aust and the right to request that Elson Aust correct any incorrect Personal Information; and
(b) that Elson Aust does not disclose any Personal Information about the Customer for the purpose of the Contract.
16.3 Elson Aust will destroy Personal Information upon the Customer's request (by e-mail) if it is no longer required unless it is required in order to fulfil the obligations of this Contract or is required to be maintained or stored in accordance with the law.
16.4 The Customer can make a privacy complaint by contacting Elson Aust via e-mail. Elson Aust will respond to that complaint within seven (7) days of receipt and will take all reasonable steps to make a decision as to whether the complaint is justified within thirty (30) days of receipt of the complaint. In the event that the Customer is not satisfied with the resolution provided, the Customer can make a complaint to the Information Commissioner at www.oaic.gov.au.
16.5 Any written notice given under this Contract shall be deemed to have been given and received: by handing the notice to the other party, in person;
(b) by leaving it at the address of the other party as stated in this Contract;
(c) by sending it by registered post to the address of the other party as stated in this Contract; if sent by facsimile transmission to the fax number of the other party as stated in this Contract (if any), on receipt of confirmation of the transmission;
(d) by email to the other party at the email address known to the Customer.
16.6 Any notice that is posted shall be deemed to have been served, unless the contrary is shown, at the time when by the ordinary course of post, the notice would have been delivered.
16.7 If the Customer at any time upon subsequent to entering into the Contract is acting in the capacity of trustee of any trust ("Trust") then whether or not Elson Aust may have notice of the Trust, the Customer consents with Elson Aust as follows:
(a) the Contract extends to all rights of indemnity which the Customer now or subsequently may have against the Trust and the trust fund;
(b) the Customer consents to the use of the Trust's assets and authority under the Trust to enter into the Contract and the provisions of the Trust do not purport to exclude or take away the right of indemnity of the Customer against the Trust or the trust fund. The Customer will not release the right of indemnity or commit any breach of trust or be a party to any other action which might prejudice that right of indemnity.
16.8 The Customer will not without consent in writing of Elson Aust (Elson Aust will not unreasonably withhold consent), cause, permit, or suffer to happen any of the following events:
(a) the removal, replacement or retirement of the Customer as trustee of the Trust;
(b) any alteration to or variation of the terms of the Trust;
(c) any advancement or distribution of capital of the Trust; or
(d) any resettlement of the trust property.
16.9 The failure by either party to enforce any provision of these terms and conditions shall not be treated as a waiver of that provision, nor shall it affect that party's right to subsequently enforce that provision. If any provision of these terms and conditions shall be invalid, void, illegal or unenforceable the validity, existence, legality and enforceability of the remaining provisions shall not be affected, prejudiced or impaired.
16.10 These terms and conditions and any contract to which they apply shall be governed by the laws of New South Wales, the state in which Elson Aust has its principal place of business, and are subject to the jurisdiction of the Paramatta Courts in that state.
16.11 Elson Aust shall be under no liability whatsoever to the Customer for any indirect and/or consequential loss and/or expense (including loss of profit) suffered by the Customer arising out of a breach by Elson Aust of these terms and conditions (alternatively Elson Aust's liability shall be limited to damages which under no circumstances shall exceed the Price of the Goods).
16.12 Elson Aust may licence and/or assign all or any part of its rights and/or obligations under this Contract to a third party with the Customer's consent.
16.13 The Customer cannot licence or assign without the written approval of Elson Aust.
16.14 The Customer agrees that Elson Aust may amend their general terms and conditions for the Customer's contract with the Customer by disclosing such to the Customer and in writing. These changes shall be deemed to take effect from the date on which the Customer accepts such changes, or otherwise at such time as the Customer makes a further request for Elson Aust to provide Goods to the Customer.
16.15 Neither party shall be liable for any default due to any act of God, war, terrorism, strike, lock-out, industrial action, fire, flood, storm or other event beyond the reasonable control of either party.
16.16 Both parties warrant that they have the power to enter into this Contract and have obtained all necessary consents and approvals to allow them to do so and that this Contract contains binding and valid legal obligations to enter into this Contract.

Please note that a larger print version of these terms and conditions is available from Elson Aust on request

elson



Elson Australasia Pty Ltd

ABN 45 059 613 991

Tel: (02) 9625 7899 Fax: (02) 9625 7855 Email: sales@elson.net.au

www.elson.net.au www.bushpex.com

38 Eddie Road, Minchinbury, NSW 2770

Sales & Service: ACT | NSW | NT | QLD | SA | TAS | VIC | WA