

elson PRESS

THE BRAND PLUMBERS TRUST



LF

99.9% Lead Free

< 0.1% Pb

elson LF PRESS system
- AS 1432 Copper Tube
(GAS)

Product information and installation manual

* Elson Lead Free copper alloy products are 99.9% Lead Free and contain less than 0.1% Lead by weight.

THE BRAND PLUMBERS TRUST

Elson Australasia is proud to introduce the ELSON Press range of copper and brass press fittings to suit AS 1432 Copper Tube.

Elson is the manufacturer and wholesale supplier of quality plumbing products specifically designed for the Australian market since 1993 and ISO 9001 accredited through SAI Global.

At Elson we're passionate about quality and offering the best design features on the market. ELSON Press is the result of years of in-house and third-party testing processes and raw material formulation to ensure the finest quality range of copper tube press fittings.

Elson's manufacturing portfolio includes a complete range of COPPER & LF BRASS PRESS fittings, BRASSWARE, TAPWARE and **BUSHPEX** water & gas jointing systems, all of which are fully approved to the required Australian and/or New Zealand Standards.

ELSON LF Press fittings are supported nationally by our sales and service team of professionals that are equipped to train and service Plumbers, Gas Fitters, Plumbing Merchants and Consultants.

ELSON LF Press fittings offer three specific system applications:

- Water – fittings with black EPDM O-rings.
- Gas – fittings with yellow HBNR O-rings.
- High Temperature / Solar – fittings with red FKM O-rings.

All fittings are manufactured from high quality, batch tested, ultra low lead DR Brass or Copper in sizes 15-100mm. All fittings 15-50mm include leak before press O-ring technology.

ELSON LF Press fittings are manufactured to comply with Australian Standard AS3688 certified by SAI Global and comply with AS/NZS4020 for Water and AS/NZS5601 for Gas. Certificate for LF brass press gas fittings is SMK02497. Certificate for copper press water fittings is SMK 26127.

Contents

ELSON LF PRESS INTRODUCTION	4
ELSON LF PRESS FEATURES	4
ELSON LF PRESS KEY BENEFITS	4
ELSON LF PRESS GAS COPPER PRESS FITTING INFORMATION	5
ELSON LF PRESS WARRANTY	6
ELSON LF PRESS GAS TECHNICAL DATA	7
ELSON LF PRESS DESIGN CONSIDERATIONS	8
ELSON LF PRESS GAS INSTALLATION GUIDE	9
ELSON LF PRESS GAS FAQs	11
ELSON LF PRESS GAS PRODUCT LISTING	13
ELSON LF PRESS TOOLS	32
CERTIFICATE OF CONFORMITY	1

THE BRAND PLUMBERS TRUST

ELSON Press Gas is a comprehensive LF brass and copper press fitting system for use with conformant copper tube to AS 1432 Type A and B Only: providing a durable and secure leak-proof joint for many gas Applications. (Other Applications are possible based on requirements by consultation with Elson).

ELSON LF Press Gas fittings are Standardmark Certified (Certificate Number SMK 26127 for copper gas fittings, SMK 02497 for LF brass gas fittings) and manufactured in accordance to AS 3688.



Features

- “V” Profile Press Pattern
- 15mm - 100mm Water & Gas
- Hi - Temp Fittings
- All Brass Press fittings are made of Lead Free DR Brass
- “Leak Before Press” O-ring
- Adapt directly to BUSHPEX
- Novopress Tool for BUSHPEX & ELSON LF Press

Key Benefits

Leak Detection

Design features on the O-ring allows for missed press leak detection when tested correctly using the defined procedure in this manual.

Long Lasting Performance

When installed correctly as per the requirements of this document and other regulatory requirements.

Secure Joint

Secure and durable permanent joint ensures the fitting can not be tampered with.

Fully Certified and Tested

Extensive third party certification and testing offers peace of mind, in addition warranty and insurance is covered by Elson.

Flame Free

Flame free installation means no need for hot works permits and no need to lug around heavy bottles used for brazing.

Reduced Installation Time

Simple, quick and reliable installation translates to reduced labour time.

* Elson Lead Free copper alloy products are 99.9% Lead Free and contain less than 0.1% Lead by weight.

ELSON LF Press Fittings Information



Applications

ELSON LF Press Gas Fittings are suitable for:

- Natural gas installations
- Liquid Petroleum Gas installations
- Other gas installations (see table page 7)
- Other media also possible (with consultation on application to Elson for approval)

Leak Before Press

The precise design of ELSON LF Press fittings allows air to pass the sealing element of unpressed fittings, thereby providing a leakage point during the commissioning of the system.

When the fitting is pressed, the O-ring material compresses, filling the gaps, creating a leak free joint.

Final testing of the system should be conducted in accordance with AS/NZS5601 and any other additional local regulations and/or requirements.

Testing with Air

Important: Unpressed fittings are identified by pressurising the system slowly with air, increase the pressure to be between 50 kPa and 200 kPa. Inspect each joint with a leak check liquid material/spray for any visual signs of leakage. After conformance, conduct testing as per AS/NZS5601.



Warranty on ELSON LF Press Fittings

Elson as the manufacturer and wholesale supplier of quality plumbing products is passionate about quality, customer service and product support. Elson recognises the importance of providing the support, confidence and peace of mind for licenced installers to use ELSON LF Press fittings.

Accordingly, Elson will provide the same warranty on ELSON LF Press fittings as the copper tube used on the installation to a maximum of 25 years. Please note that if the warranty on the copper tube is 10 years then the ELSON LF Press fitting Warranty will also be 10 years. **Our warranty applies to fault or defect in the ELSON LF Press fittings only and does not cover fault arising from the external environment or caused by incorrect installation.**

In addition to this the warranty will only cover ELSON LF Press fittings installed by a Licenced Plumber or Gas Fitter in accordance with this TECHNICAL AND INSTALLATION GUIDE and AS/NZS 3500 for water and AS/NZS 5601 for Gas and any other local regulations and/or requirements. **The warranty only applies to installation with AS 1432 type A or type B conformant copper tube. All copper press tools MUST be kept fully functional and in proper working order as any leak resulting from incorrect pressing does not relate to and will therefore not be covered by this product warranty. Approved tooling and correct installation as outlined in this manual must be used.**

Tooling Repair and Servicing

Elson repairs and services Novopress battery tools at our National Distribution Centre in Minchinbury NSW. Please contact your local ELSON Press stockist. You can also contact Elson National Distribution Centre or your regional sales manager for any repair or service enquiries.

Technical Data/Applications (Gas)

ELSON Press is suitable for use with type A and B copper tube complying with AS 1432.

Note: AS3688 covers Mechanical Joint Press fittings for GAS to 500kPa at 70 Degrees Celcius, with fittings exposed to direct sunlight being able to support temperature up to 100 Degrees Celcius for intermittent periods.

ELSON Press GAS HNBR O-ring have been tested up to 100 Degrees Celcius.

GAS O-RING SCOPE OF APPLICATION

Application	Comment	MOP [kPa]	TEMP [°C]	Gas (HNBR)
Natural Gas/LPG				
Natural Gas	Australian gas approved, Note: The scope of AS/NZS5601 for all gas systems is restricted to 200kPa	200	70	✓
Liquid Petroleum Gas				✓

Other media can be used subject to request on application with Elson.

MOP[kPa]	Maximum safe working pressure (continuous operating pressure), greater short duration peaks possible
TEMP(°C)	Maximum continuous operating temperature (Celsius), greater short duration peaks possible
HNBR	Hydrogenated Nitrile Butadiene Rubber

Not Suitable:

Acetylene, Ammoniac gases, Coolant Inhibitor, Glycerine Triacetate, Medical Gas Applications, Methanol, Refrigeration and Air Conditioning Applications, Sodium Hydroxide, Urea Solution.

Approved elson PRESS tools are Novopress ACO 153, ACO 203. These approved tools must be used with elson PRESS Jaws.

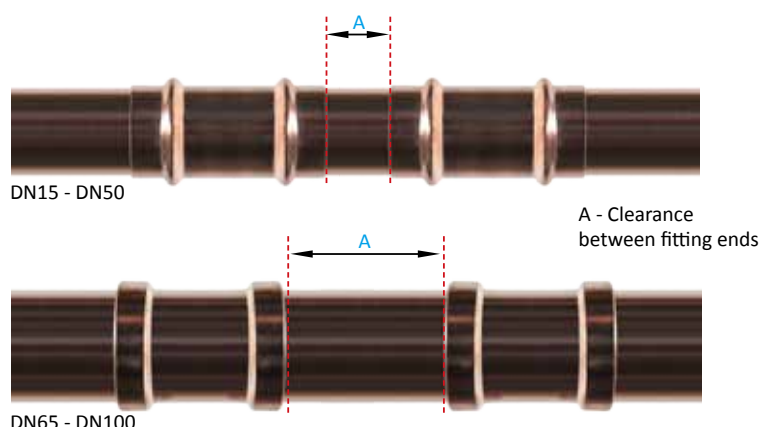
Other tooling with compatible jaws may be approved on application to Elson. Written approval is required from Elson before use on ELSON Press Product.

Design Considerations

Distance between ELSON Press fittings

A minimum separation between fitting installation needs to occur to ensure the press forming does not possibly compromise either joint during installation. The concentricity of Copper Tube Wall Thickness in the pipework can also affect the fittings integrity to seal when they are installed too close together.

The following table indicates the minimum separation distance required for ELSON LF Press Fittings by size of fitting. This distance must be applied between any fittings as a minimum from fitting edge to fitting edge. This Design requirement needs to be conformant to have warranty coverage on all ELSON LF Press fittings.



Tube Size	Minimum Clearance A (mm)	Tube Size	Minimum Clearance A (mm)	Tube Size	Minimum Clearance A (mm)
15mm	10	32mm	20	65mm	40
20mm	10	40mm	30	80mm	40
25mm	10	50mm	40	100mm	40

Brazing near ELSON LF Press fittings

No Hot Works, (Soldering, Welding or Annealing) can be performed within a minimum defined distance of any installed ELSON LF Press Fittings.

The minimum separation distance by size is stated in the table below.

Considerations should be made prior to any installation that may require any Soldering, Welding or Annealing to ensure it is done prior to installation with ELSON LF Press Fittings.

If the defined minimum separation distances cannot be achieved and any Hot Work detailed needs to be performed, preventive measures need to be applied to ensure the installed fitting O-ring maximum operating temperature, defined in this document by O-ring Type, is not exceeded at any time by heat transfer or thermal conductivity.

It should also be noted that considerations also need to be taken to ensure installation location will not affect ELSON LF Press fittings maximum operating temperature with radiant heat and/or heat transfer during installation, commissioning and operation.

Tube Size	Minimum Clearance (mm)	Tube Size	Minimum Clearance (mm)	Tube Size	Minimum Clearance (mm)
15mm	400	32mm	1000	65mm	1800
20mm	600	40mm	1200	80mm	2000
25mm	800	50mm	1500	100mm	2500

Installation Instructions

Note: Check pipe and fitting compatibility; both the piping material (must be type A or B copper tube conformant to AS 1432) and the O-ring must be checked if suitable for purpose (see page 6) and the exterior environment must also be considered.

1. Cut the Tube

An appropriate copper tube cutter must be used to ensure a clean square cut.

Note: It is important that the copper tube is cut completely square, the end of the tube (outside) must be clean and free from any scratches or damage such as dints or deformity.



2. Remove Burrs

Make sure that the internal and external tube end is completely free from burrs or sharp edges by using a file or deburring tool.

Note: ensure over use does not affect the tube end outside diameter.



3. Inspect the Fitting

Before inserting the tube, check O-rings (1-50mm) and also spacers/grab rings (65-100mm) for correct placement, they are free of damage or any dust, dirt or debris. We recommend the fittings are retained in packaging up to the point of use where ever possible.



4. Marking Insertion Depth on Tube

All cut and deburred Copper tube ends for insertion into the fitting require an insertion depth mark to be applied to the tube prior to insertion into the fitting. The mark will be applied by measuring from the end of the tube with a ruler or tape measure and using a marker pen to the required length. The mark will ensure the tube is inserted completely into the fitting prior to press.



Table Insertion Marking Depth by Size

Tube Size	Marking Insertion Depth
DN15	19mm
DN20	24mm
DN25	25mm
DN32	27mm
DN40	34mm
DN50	42mm
DN65	45mm
DN80	52mm
DN100	62mm

5. Tube Insertion

The Tube should be inserted Parallel into the fitting Coupling ensuring no damage is caused to the O-ring or grab ring and spacer (DN65-100mm), ensuring the insertion mark is visible at the end of the fitting next to the fitting coupling end.



6. Press Tool Selection

The tool to be used must be conformant, well maintained and within its Manufacturers service requirement. The correct jaw type and size must be inspected to ensure it is clean and free from defects and contamination.

Note: only approved tooling may be used on ELSON LF Press fittings. Refer to Approved Tooling Table on page 7.



7. Press the Joint

The jaw must be placed over the fitting, correctly aligned and positioned. When all requirements are correct, the tool should be activated to press the joint. The tool should complete the correct cycle and the jaw ends should fully close on completion. If the tool does not complete the required cycle during operation the fitting must be cut out, replaced then repressed. **No fitting should be pressed more than once. Tooling should be used as per its respective manufacturers' documented requirements.**



8. Joint Completion

The fitting should be inspected after pressing to ensure the correct press has been performed and no cracking or over deforming has occurred. The pipe insertion mark should be checked and be at the fitting edge, to ensure it has not moved. (DN65/ DN80/DN100 has a sticker on each fitting that can be removed after press and inspection to ensure conformance).



Important: Unpressed fittings are identified by pressurising the system slowly with air, increase the pressure to be between 50 kPa and 200 kPa. Inspect each joint with a leak check liquid material/spray for any visual signs of leakage. After conformance, conduct pressure testing as per AS/NZS 5601.

ELSON Press Fittings FAQ

ELSON LF Press Fittings Frequently Asked Questions

Q. Do I need to lubricate the O-ring?

A. No, the O-ring is pre-lubricated. Using additional lubricants could reduce the longevity of the O-ring and void the warranty. Care should be taken during copper tube insertion to ensure the O-ring does not roll or dislodge.

Q. What grades/types of copper tube do the fittings suit?

A. Annealed (ANN), Bendable Quality (BQ) and Hard Drawn (HD) Type A and B copper tube compliant to AS1432.

Q. What pipe preparation is required?

A. Please see 'Installation Instructions' on pages 8 & 9.

Q. When using ELSON Press with older pipes, what surface preparation is required?

A. The surface should be prepared in the same way as you normally would with brand new pipe.

Q. Can ELSON LF Press Fittings be placed in the ground?

A. Yes, but the tube and fittings must be protected when installed in any corrosive and/or acidic environments, this includes possible ground water exposure, as per regulatory requirements.

Q. Can ELSON LF Press Fittings be exposed to direct UV sunlight and heat?

A. Yes. Please refer to the Table on page 6.

Q. Can ELSON LF Press Fittings be used with medical gases?

A. No, the fittings are not recommended for use with most medical gases. Consultation with Elson on specific installation requirements is recommended.

Q. Can ELSON Press Fittings be used with medical gases?

A. No, the fittings are not recommended for use with most medical gases. Consultation with Elson on specific installation requirements is recommended.

Q. Am I able to use other tools to crimp a ELSON Press fitting?

A. Yes, Approved elson PRESS tools are Novopress, ACO 153, ACO 203. These approved tools must be used with elson PRESS Jaws. Other tooling with compatible jaws may be approved on application to Elson. Written approval is required from Elson before use on ELSON Press Product.

ELSON Press Fittings FAQ

ELSON LF Press Fittings Frequently Asked Questions

Q. Does the clipping of fittings/tube differ from a welded copper application?

A. No, the same type of clips can be used when installed in accordance with Australian standards and any other local regulatory requirements.

Q. What is the recommended space between pressed fittings?

A. Please see the 'distance between ELSON LF Press fittings' section on page 7.

Q. Can ELSON LF Press fittings be dismantled and reused?

A. No, once pressed it is a permanent installation.

Q. Will I be able to rotate a ELSON LF Press fitting once installed?

A. No, once pressed, a ELSON LF Press fitting cannot be rotated.

Q. Can you braze (silver solder) near a ELSON LF Press fitting?

A. See section on 'Brazing near ELSON LF Press fittings' on page 7. It is not recommended unless distance and precautionary measures are taken to prevent damage to the sealing O-ring.

Q. What procedure should I follow to show any leaks at the end of my installation?

A. Refer to 'Testing with Water' and 'Testing with Air' on page 4 of this Technical and Installation Guide.

Q. What are some of the benefits of ELSON LF Press fittings?

A. Fast, easy and ergonomical installation. The built in ELSON Press Leak indicator design gives an indication of an unpressed joint (refer to instructions on page 4), which will help uncover possible problems with installation.

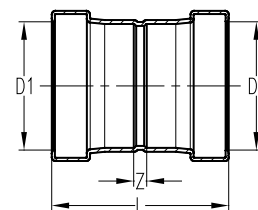
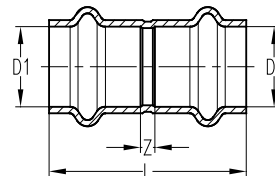


PRODUCT LISTING

ELSON LF PRESS GAS FITTINGS

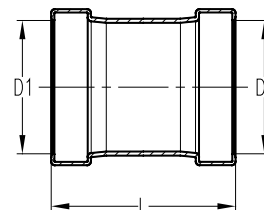
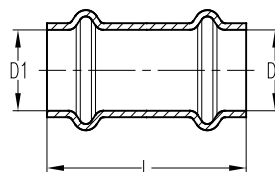
No 1 Coupling

Code	Size (D1)	L	Z
35000	DN15	41.5	4.5
35004	DN20	50.5	4.5
35006	DN25	53.5	5.5
35008	DN32	57.5	5.5
35010	DN40	71.5	5.5
35012	DN50	87.5	5.5
35014	DN65	95.0	7.0
35016	DN80	109.0	7.0
35018	DN100	129.0	7.0



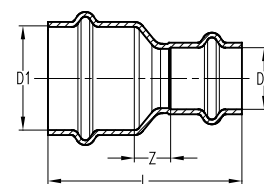
No 1S Slip Coupling

Code	Size (D1)	L
35080	DN15	41.5
35082	DN20	50.5
35084	DN25	53.5
35086	DN32	57.5
35088	DN40	71.5
35090	DN50	87.5
35092	DN65	95.0
35094	DN80	109.0
35096	DN100	129.0



No 1R Red Coupling

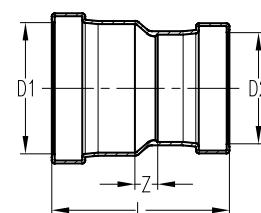
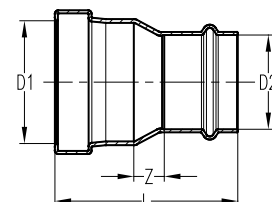
Code	Size (D1)	Size (D2)	L	Z
35024	DN20	DN15	50.5	9.0
35026	DN25	DN15	55.5	13.0
35028	DN25	DN20	56.5	9.5
35034	DN32	DN25	59.5	9.5
35038	DN40	DN25	72.5	15.5
35040	DN40	DN32	69.0	10.0



ELSON LF PRESS GAS FITTINGS

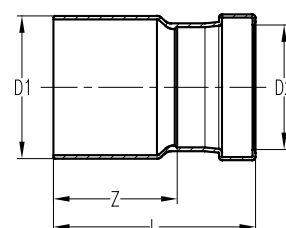
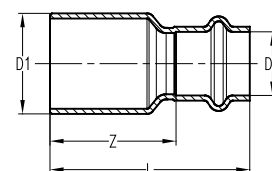
No 1R Red Coupling

Code	Size (D1)	Size (D2)	L	Z
35044	DN50	DN25	90.0	25.0
35046	DN50	DN32	87.0	20.0
35048	DN50	DN40	88.0	14.0
35050	DN65	DN32	101.0	31.0
35051	DN65	DN40	103.5	26.5
35052	DN65	DN50	102.0	17.0
35053	DN80	DN40	121.0	37.0
35054	DN80	DN50	119.0	27.0
35055	DN80	DN65	108.0	13.0
35056	DN100	DN50	147.5	45.5
35057	DN100	DN65	134.0	29.0
35058	DN100	DN80	136.5	24.5
35058	DN100	DN80	136.5	24.5



M&F Reducer

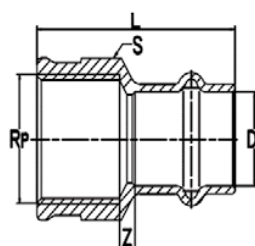
Code	Size (D1)	Size (D2)	L	Z
35060	DN20	DN15	48.5	30.0
35062	DN25	DN15	56.0	37.5
35064	DN25	DN20	55.5	32.5
35066	DN32	DN20	61.0	38.0
35068	DN32	DN25	60.5	36.5
35069	DN40	DN25	70.0	46.0
35070	DN40	DN32	69.5	43.5
35067	DN50	DN25	86.5	60.5
35071	DN50	DN32	89.0	56.0
35072	DN50	DN40	103.5	70.5
35073	DN65	DN40	103.5	70.5
35074	DN65	DN50	107.0	66.0
35075	DN80	DN50	118.5	77.5
35076	DN80	DN65	113.5	69.5
35077	DN100	DN50	149.0	108.0
35078	DN100	DN65	132.5	88.5
35079	DN100	DN80	132.5	81.5



ELSON LF PRESS GAS FITTINGS

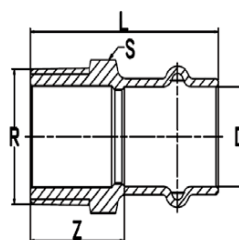
No.2 Adaptor LF DR BRASS

Code	Size (D1)	Thread	L	Z	S
LF35102	DN15	Rp 1/2"	40.5	5.0	26.0
LF35106	DN20	Rp 3/4"	45.5	5.0	31.0
LF35108	DN25	Rp 1"	48.5	6.0	37.5
LF35110	DN32	Rp 1 1/4"	57	7.0	47.0
LF35112	DN40	Rp 1 1/2"	62.5	7.0	53.0
LF35114	DN50	Rp 2"	75.5	9.5	70.0



No.3 Adaptor LF DR BRASS

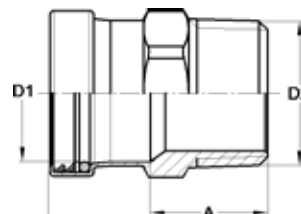
Code	Size (D1)	Thread	L	Z	S
LF35126	DN15	R 1/2"	40.9	21.0	22.0
LF35128	DN15	R 3/4"	42.9	23.0	28.0
LF35130	DN20	R 1/2"	45.5	20.6	28.0
LF35132	DN20	R 3/4"	48.0	23.0	28.0
LF35133	DN25	R 3/4"	49.6	24.7	36.0
LF35134	DN25	R 1"	52.5	27.0	36.0
LF35136	DN32	R 1 1/4"	59.9	32.7	43.0
LF35138	DN40	R 1 1/2"	65.5	32.3	50.0
LF35140	DN50	R 2"	80.3	39.1	64.0



ELSON LF PRESS GAS FITTINGS

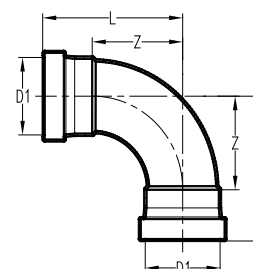
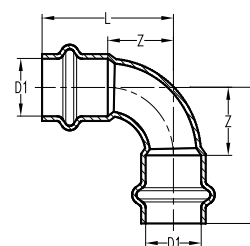
Copper R BSP No.3 MI Connector

Code	Size (D1)	D2	L	A
35622	DN65	R2 1/2"	95.5	51.5
35624	DN80	R3"	105.0	54.0
35626	DN100	R4"	122.0	61.0



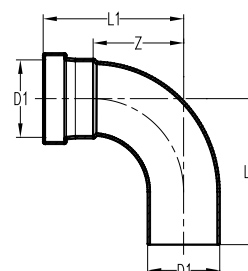
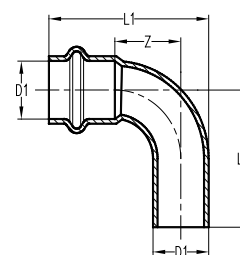
No.12 90D Elbow F&F

Code	Size (D1)	L	Z
35152	DN15	32.5	14.0
35156	DN20	44.5	21.5
35158	DN25	54.5	30.5
35160	DN32	62.0	36.0
35162	DN40	77.5	44.5
35164	DN50	100.5	59.5
35166	DN65	124.5	80.5
35168	DN80	147.0	96.0
35170	DN100	183.5	122.5



No.12 90D Elbow M&F

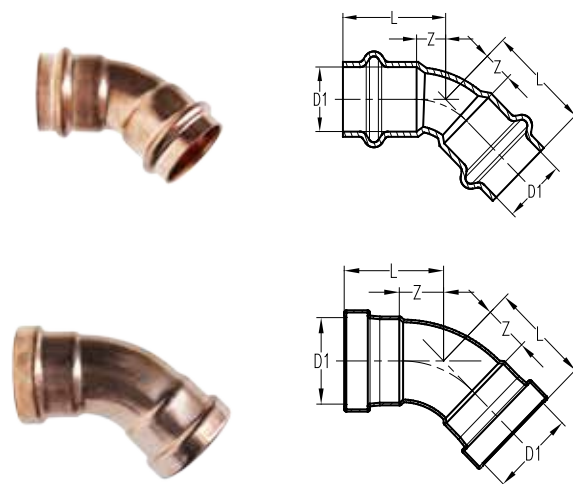
Code	Size (D1)	L1	Z	L2
35176	DN15	32.5	14.0	35.5
35178	DN20	44.5	21.5	45.0
35180	DN25	54.5	30.5	54.5
35182	DN32	62.0	36.0	62.0
35184	DN40	77.5	44.5	77.5
35186	DN50	100.5	59.5	102.0
35188	DN65	124.5	80.5	125.5
35190	DN80	147.0	96.0	152.5
35192	DN100	183.5	122.5	185.5



ELSON LF PRESS GAS FITTINGS

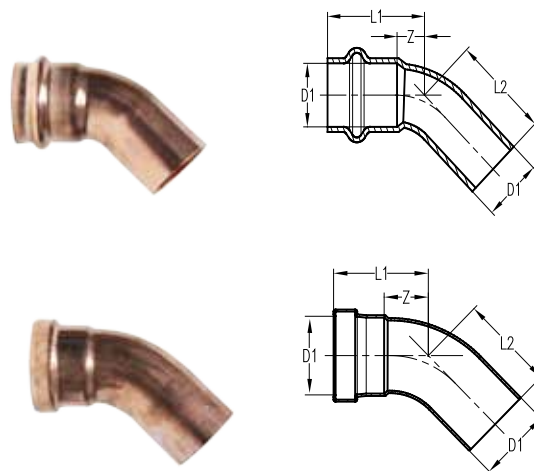
No 12 45D Elbow F&F

Code	Size (D1)	L	Z
35329	DN15	24.5	6.0
35331	DN20	32.0	9.0
35328	DN25	36.5	12.5
35330	DN32	41.0	15.0
35332	DN40	51.5	18.5
35334	DN50	64.5	23.5
35336	DN65	79.5	35.5
35338	DN80	93.0	42.0
35340	DN100	118.0	57.0



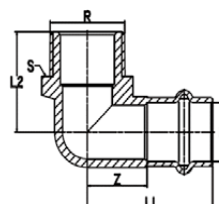
No.12 45D Elbow M&F

Code	Size (D1)	L1	Z	L2
35342	DN15	24.5	6.0	27.0
35344	DN20	32.0	9.0	34.0
35346	DN25	36.5	12.5	38.5
35348	DN32	41.0	15.0	43.0
35350	DN40	51.5	18.5	53.5
35352	DN50	64.5	23.5	67.5
35354	DN65	79.5	35.5	84.5
35356	DN80	93.0	42.0	99.0
35358	DN100	118.0	57.0	126.0



No.13 Male Elbow LF DR BRASS

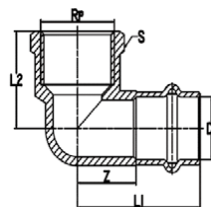
Code	Size (D1)	Thread	L1	L2	Z	S
LF35430	DN15	R 1/2"	40.0	31.0	21.0	22.0
LF35432	DN20	R 3/4"	45.0	33.4	21.0	29.0



ELSON LF PRESS GAS FITTINGS

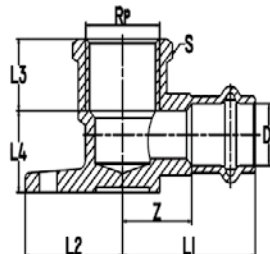
No.14 Female Elbow LF DR BRASS

Code	Size (D1)	Thread	L1	L2	Z	S
LF35444	DN20	Rp 3/4"	45.0	31.0	21.0	31.2



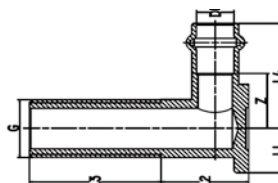
No.15 Female Back Plate Elbow LF DR BRASS

Code	Size (D1)	Thread	L1	L2	L3	L4	Z	S
LF35364	DN15	Rp 1/2"	38.5	27.5	16.2	17.0	19.5	26.0
LF35366	DN20	Rp 3/4"	48.0	27.5	17.5	24.1	24.0	32.0



No.19 Male Back Plate Elbow LF DR BRASS

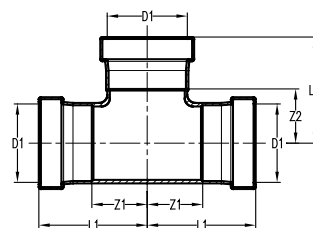
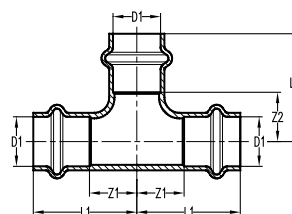
Code	Size (D1)	Thread	L1	L2	L3	L4	Z
LF35378	DN15	G 1/2"	16.0	30.0	45.0	39.0	20.0
LF35380	DN15	G 1/2"	16.0	30.0	65.0	39.0	20.0
LF35381	DN20	G 1/2"	27.5	30.0	45.0	48.0	24.0
LF35382	DN20	G 3/4"	27.5	30.0	65.0	48.0	24.0
LF35384	DN20	G 3/4"	27.5	41.0	159.0	48.0	24.0



ELSON LF PRESS GAS FITTINGS

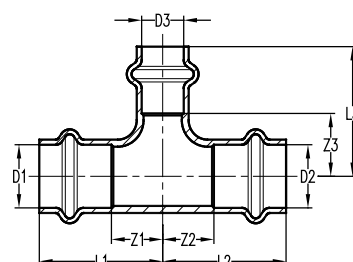
No.24 Tee Equal

Code	Size (D1)	L1	Z1	L2	Z2
35246	DN15	34.0	15.5	29.0	10.5
35250	DN20	44.0	21.0	37.5	14.5
35252	DN25	49.0	25.0	41.5	17.5
35254	DN32	51.0	25.0	48.0	22.0
35256	DN40	60.0	27.0	60.0	27.0
35258	DN50	74.5	33.5	74.5	33.5
35260	DN65	88.0	44.0	88.0	44.0
35262	DN80	100.0	49.0	100.0	49.0
35264	DN100	126.0	65.0	119.5	58.5



No 25 Tee Red

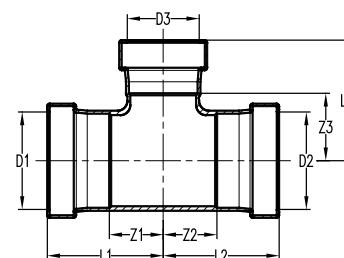
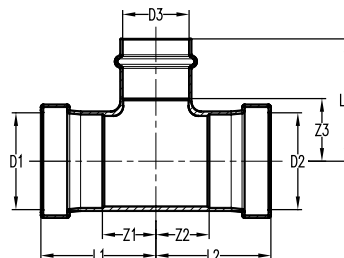
Code	Size (D1)	Size (D2)	Size (D3)	L1	Z1	L2	Z2	L3	Z3
35272	DN20	DN20	DN15	44.0	21.0	40.5	22.0	37.5	14.5
35276	DN25	DN25	DN15	41.0	17.0	41.0	17.0	36.0	17.5
35278	DN25	DN25	DN20	44.0	20.0	44.0	20.0	41.0	18.0
35280	DN32	DN32	DN15	40.5	14.5	40.5	14.5	40.0	21.5
35281	DN32	DN32	DN20	45.0	19.0	45.0	19.0	46.0	23.0
35282	DN32	DN32	DN25	48.0	22.0	48.0	22.0	46.0	22.0



ELSON LF PRESS GAS FITTINGS

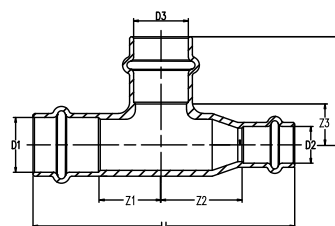
No 25 Tee Red

Code	Size (D1)	Size (D2)	Size (D3)	L1	Z1	L2	Z2	L3	Z3
35283	DN40	DN40	DN20	51.0	18.0	51.0	18.0	49.5	26.5
35284	DN40	DN40	DN25	52.0	19.0	52.0	19.0	50.5	26.5
35286	DN40	DN40	DN32	54.5	21.5	54.5	21.5	54.5	28.5
35290	DN50	DN50	DN25	60.0	19.0	60.0	19.0	58.5	34.5
35294	DN50	DN50	DN40	67.0	26.0	67.0	26.0	66.5	33.5
35296	DN65	DN65	DN50	83.5	39.5	83.5	39.5	84.5	43.5
35298	DN80	DN80	DN50	89.5	38.5	89.5	38.5	90.0	49.0
35300	DN80	DN80	DN65	92.5	41.5	92.5	41.5	96.0	52.0
35302	DN100	DN100	DN50	103.0	42.0	103.0	42.0	103.5	62.5
35304	DN100	DN100	DN65	103.5	42.5	103.5	42.5	107.5	63.5
35305	DN100	DN100	DN80	112.0	51.0	112.0	51.0	114.0	63.0



No.26 Tee Red

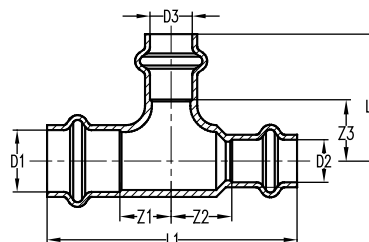
Code	Size (D1)	Size (D2)	Size (D3)	L1	Z1	L2	Z2	Z3
35274	DN20	DN15	DN20	84.5	20	32.5	21.5	13.5



ELSON LF PRESS GAS FITTINGS

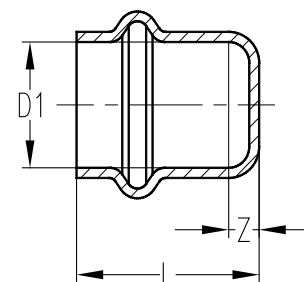
No.27 Tee Red

Code	Size (D1)	Size (D2)	Size (D3)	L1	Z1	L2	Z2	Z3
35270	DN20	DN15	DN15	81.0	17.5	32.5	22.0	13.5



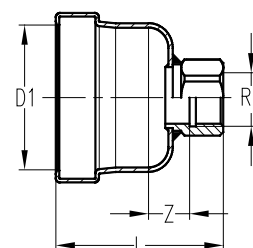
No.61 End Cap

Code	Size (D1)	L	Z
35390	DN15	22.0	3.5
35392	DN20	27.5	4.5
35394	DN25	28.0	4.0
35396	DN32	30.0	4.0
35398	DN40	37.5	4.5
35400	DN50	48.0	7.0



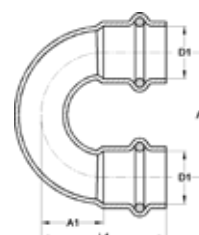
No.61 End Cap W/port

Code	Size (D1)	L	Z	Rp
35402	DN65	79.5	19.5	Rp 3/4"
35404	DN80	94.5	27.5	Rp 3/4"
35406	DN100	113.5	36.0	Rp 3/4"



U-Bend Coupling

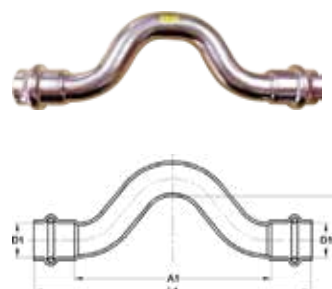
Code	Size (D1)	L1	A1	A2
35602	DN15	42.5	24.0	45.5
35604	DN20	46.5	23.5	45.5



ELSON LF PRESS GAS FITTINGS

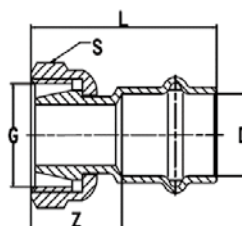
Full Crossover Coupling

Code	Size (D1)	L1	A1	A2
35612	DN15	130.0	93.0	21.0
35614	DN20	148.5	102.5	18.0



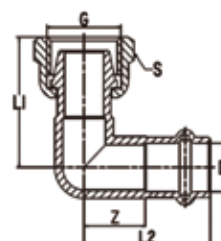
No.62 Female Connector Tapered LF DR BRASS

Code	Size (D1)	Thread	L	Z	S
LF35212	DN20	G 1/2"	48.5	22.0	26.0
LF35216	DN20	G 3/4"	59.4	22.0	31.0



No.63 Female Connector Tapered LF DR BRASS

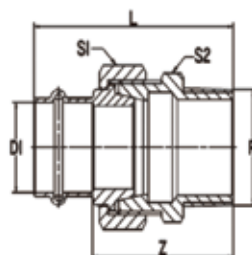
Code	Size (D1)	Thread	L1	L2	Z	S
LF35220	DN15	G 1/2"	42.0	40.0	21.0	26.0
LF35222	DN20	G 3/4"	45.4	46.5	22.5	31.0



ELSON LF PRESS GAS FITTINGS

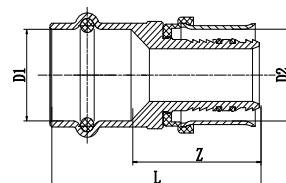
No.69 Male Union LF DR BRASS

Code	Size (D1)	Thread	L	Z	S1	S2
LF35224	DN15	R 1/2"	58.5	38.0	30.0	27.0
LF35226	DN20	R 3/4"	67.0	42.0	38.0	34.0
LF35228	DN25	R 1"	74.5	49.0	47.0	43.5
LF35230	DN32	R 1 1/4"	81.5	55.0	54.0	49.5
LF35232	DN40	R1 1/2"	91.5	59.0	67.0	61.0
LF35234	DN50	R 2"	106.5	66.0	77.5	70.0



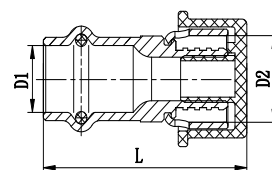
Adaptor elson LF PRESS x BUSHPEX Crimp Gas LF DR BRASS

CODE	Size (D1)	Size (D2)	L	Z
LF29880	DN15	16mm	54.0	34.0
LF29882	DN20	20mm	62.0	38.0
LF29884	DN20	25mm	62.0	38.0
LF29886	DN25	25mm	62.0	38.0
LF29888	DN25	32mm	62.0	38.0



Adaptor Gas elson LF PRESS x EPS LF Crimp LF DR BRASS

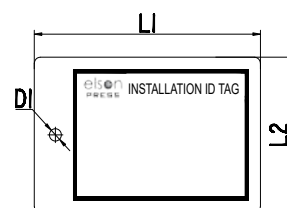
CODE	Size (D1)	Size (D2)	L
LF21886	DN15	16mm	43.0
LF21888	DN20	20mm	51.0
LF21890	DN20	25mm	53.7
LF21891	DN25	25mm	51.0
LF21895	DN25	32mm	62.0



ELSON LF PRESS GAS FITTINGS

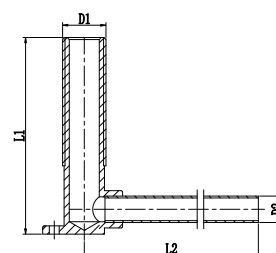
No.61 End Cap

CODE	Size (D1)	L1	L2
35530	7.0	75.0	50.0



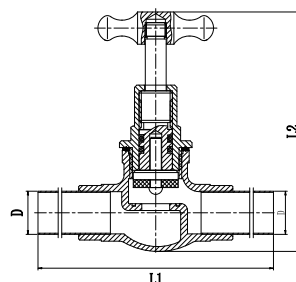
Adapt 1/2 MI NO 19BP EXT With 100mm x DN15 CU Tail

Code	Size (D1)	Size (D2)	L1	L2
69024	G 1/2B	DN15	95	118.5



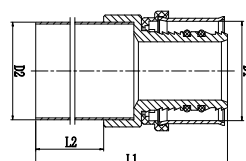
Adapt 3/4 OD S/Cock With 100mm x DN20 CU Tails

Code	Size (D1)	L1	L2
69152	DN20	268	79



Adapt PEX-AL GAS BARB 32mm With 100mm x DN32 CU Tail

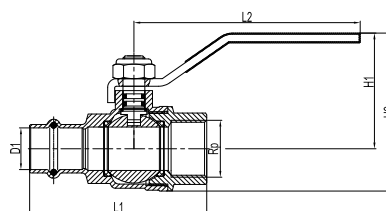
Code	Size (D1)	Size (D2)	L1	L2
69158	DN32	DN32	141	100



ELSON LF PRESS GAS FITTINGS

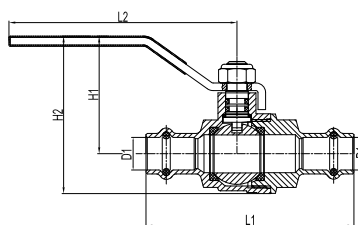
elson LF PRESS Gas Ball Valve LF DR BRASS Lever Handle

Code	Size (D1)	Thread	L1	L2	H1	H2
LF73560	DN15	Rp 1/2"	65.4	90.0	47.0	62.6
LF73562	DN20	Rp 3/4"	82.2	103.5	53.3	72.8



elson LF PRESS Gas Ball Valve LF DR BRASS Lever Handle

Code	Size (D1)	L1	L2	H1	H2
LF73580	DN15	82.0	90.0	47.0	62.6
LF73582	DN20	101.0	103.5	53.3	72.8
LF73584	DN25	112.0	103.5	57.2	80.9
LF73586	DN32	128.5	135.0	65.6	94.7
LF73588	DN40	151.0	135.0	72.4	108.0
LF73590	DN50	174.0	165.0	90.0	133.0



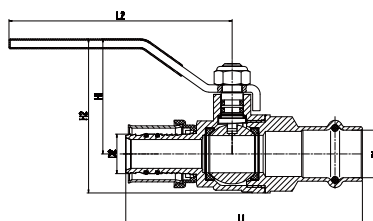
ELSON LF PRESS GAS BALL VALVES

elson Press Gas to BUSHPEX Crimp Gas Ball Valve 729 Series DR Brass L/H

Code	Size (D1)	Size (D2)	L1	L2	H1	H2
72990	DN15	DN15	89.0	90.0	46.5	62.2
72992	DN20	DN20	95.0	90.0	46.5	62.2
72994	DN25	DN25	95.0	90.0	46.5	62.2

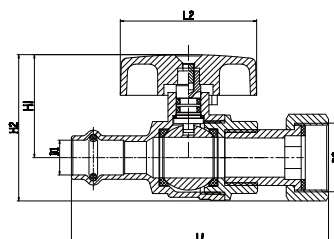


NOT LEAD FREE DR BRASS



elson LF PRESS GAS Ball Valve LF DR BRASS Tee Handle Loose Nut

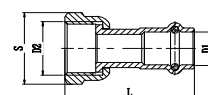
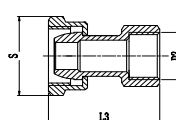
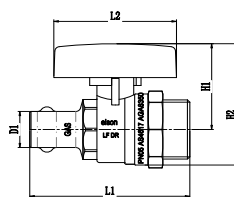
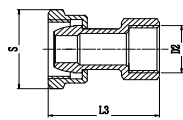
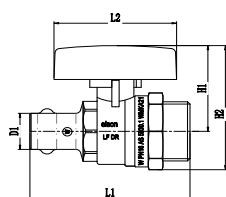
Code	Size (D1)	Thread	L1	L2	H1	H2
LF73572	DN15	G 3/4"	94.2	50.0	38.0	54.0



ELSON LF PRESS GAS BALL VALVES

elson LF PRESS B/V Kit GAS INST. W/Heater L/Nut

Code	PART (1) PRESS WATER BALL VALVE		PART (2) PRESS GAS BALL VALVE		PART (3) PRESS WATER NO.62 FI CONNECTOR	
	Size(D1)	Size(D2)	Size(D1)	Size(D2)	Size(D1)	Size(D2)
LF73720	DN15	G1/2	DN15	G1/2	DN15	G1/2
LF73722	DN20	G3/4	DN20	G3/4	DN20	G3/4
LF73723	DN15	G3/4	DN20	G3/4	DN15	G3/4
LF73724	DN15	G1/2	DN20	G3/4	DN15	G1/2
LF73725	DN15	G1/2	DN15	G3/4	DN15	G1/2
LF73721	DN15	G3/4	DN15	G3/4	DN15	G3/4



PART (1)	L1	L2	L3	H1	H2	S
LF73720	73	50	45	38	54	35
LF73722	81	50	45	47	60	35
LF73723	73	50	45	38	54	35
LF73724	73	50	45	38	54	35
LF73725	73	50	45	38	54	35
LF73721	73	50	45	38	54	35

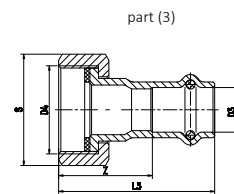
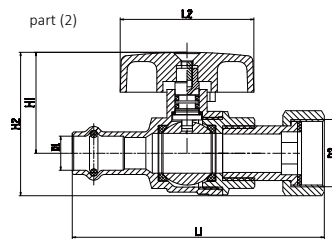
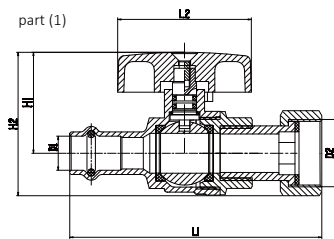
PART (2)	L1	L2	L3	H1	H2	S
LF73720	73	50	45	38	54	35
LF73722	81	50	45	47	60	40
LF73723	81	50	45	47	60	40
LF73724	81	50	45	47	60	40
LF73725	73	50	45	38	54	35
LF73721	73	50	45	38	54	35

PART (3)	L	S
LF73720	48	29.5
LF73722	57.5	35
LF73723	48	35
LF73724	48	29.5
LF73725	48	29.5
LF73721	48	35

ELSON LF PRESS GAS BALL VALVES

elson LF PRESS Connection Kit GAS INST. W/Heater Loose Nut

Code	Size (D1)	Size (D2)	L1	L2	H1	H2	Size (D3)	Size (D4)	L3	Z	S
LF73693	DN15	G 3/4"	94.2	50.0	38.0	54.0	DN15	G 3/4"	47.0	28.0	30.0



ELSON LF PRESS TOOLS

Novopress ACO153 Bluetooth Press Tool Kit With DN15-DN32 CU Press Jaws, 2 Batteries & 1 Charger

Code	Size (D1)
36900	DN15-DN32



Novopress ACO153 Bluetooth Press Tool Kit With 2 Batteries & 1 Charger, Less Jaw

Code
36901



Novopress ACO153 Bluetooth Press Tool Skin (No Battery)

Code
36902



elson PRESS Jaw Novopress ACO153 Press Tool

Code	Size (D1)
36810	DN15
36812	DN20
36814	DN25
36816	DN32



ELSON LF PRESS TOOLS

Charger ACO153 Press Tool

Code

36917



Battery ACO153 Press Tool

Code

36918



Novopress Case Only Suit ACO-153 Tool

Code

36909



Novopress ACO203 Bluetooth Press Tool Kit With DN15-DN32 CU Press Jaws, 2 Batteries & 1 Charger

Code

36905

Size (D1)

DN15-DN32



Novopress ACO203 Bluetooth Press Tool Kit With 2 Batteries & 1 Charger, Less Jaw

Code

36903



ELSON LF PRESS TOOLS

Novopress ACO203 Bluetooth Press Tool Skin (No Battery)

Code

36907



Novopress CU Press Jaw Set PB2-AV40-50 Suit Copper DN40-DN50 For ACO203 & ACO203 BT Press Tool

Code

36906

Size (D1)

DN40-DN50



Novopress CU Press Jaw Set W/ZB203 Jaw Adaptor Suit Copper DN65-DN100 For ACO203 BT Press Tool

Code

36804

Size (D1)

DN65-DN100



elson PRESS Jaw Novopress ACO203 BT Press Tool

Code

36820

Size (D1)

DN15

36822

DN20

36824

DN25

36826

DN32

36825

DN40

36830

DN65

36832

DN80

36834

DN100



ELSON LF PRESS TOOLS

Novopress Adaptor Suit ACO203 BT DN65 to DN100 Jaw

Code

36839



Charger Novopress ACO203 BT Press Tool

Code

36927



Battery Novopress ACO203 BT Press Tool

Code

36928



LEAD FREE* Plumbing Solutions



STANDARDSMARK LICENCE

SAI Global hereby grants:

Elson Australasia Pty Ltd

38 Eddie Road, Minchinbury, NSW 2770, Australia

StandardsMark Licence

Manufactured to:

AS 3688:2016 - Water supply and gas systems - Metallic fittings and end connectors

"the StandardsMark Licensee" the right to use the STANDARDSMARK as shown below only in respect of the goods described and detailed in the Schedule which are produced by the Licensee or on behalf of the Licensee* and which comply with the appropriate Standard referred to above as from time to time amended. The Licence is granted subject to the rules governing the use of the STANDARDSMARK and the Terms and Conditions for certification and licence. The Licensee covenants to comply with all the Rules and Terms and Conditions.

Certificate No: SMK26127

Issued: 10 October 2017

Expires: 29 August 2022

Originally Certified: 30 August 2016

Current Certification: 10 October 2017

Nicole Grantham
General Manager SAI Global Certification Services



www.jas-anz.org/register

* For details of manufacture, refer to the licensee

The STANDARDSMARK is a registered certification trademark of SAI Global Pty Limited (A.C.N. 050 644 642) and is issued under licence by SAI Global Certification Services Pty Limited (ACN 108 716 669) ("SAI Global") 680 George Street, Sydney NSW 2000, GPO Box 5420 Sydney NSW 2001. This certificate remains the property of SAI Global and must be returned to SAI Global upon its request. Refer to www.sai-global.com, for the list of product models.





AGA CERTIFIED PRODUCT

JAS-ANZ



Certificate Holder:	ELSON AUSTRALASIA PTY LTD
ABN/ACN No. (if applicable):	059 613 991
Manufacturer:	Elson Australasia Pty Ltd
Agent (if applicable):	N/A
Type of Component:	Type 1 Manual Ball Valve
Model No. & Description:	ELSON (Refer to Page 2 for model designations)
Relevant Standard(s):	AS 4617 – 2018 (Inc Amdt 1)

This is to certify that the particular **COMPONENT** specifically described herein and supplied to The Australian Gas Association (hereafter called the AGA) by the Certificate Holder named above has been subject to "type-testing" and assessed by the AGA to comply with the requirements of the AGA's Product Certification Scheme for Type Tested Gas Products.

This Certificate is issued on the express conditions that:

- The Certificate Holder undertakes to comply with the Rules Governing The AGA's Product Certification Scheme (hereafter called the Rules Governing);
- This Certificate remains the property of the AGA; and
- The AGA reserves the right to cancel this Certificate in accordance with the Rules Governing, and in such an event the Certificate Holder undertakes to surrender the Certificate to the AGA upon request.



James D Burns

Client Manager

Min

Certificate Authorised

Certificate first issued: **8 August 2017**

Certificate No: **8350**

This copy valid from: **7 June 2022**

Refer specification issue: **04**



THE BRAND PLUMBERS TRUST



Elson Australasia Pty Ltd

ABN 45 059 613 991
ACN 059 613 991

P.O. Box 3217
Mount Druitt Village NSW 2770

Tel: (02) 9625 7899
Fax: (02) 9625 7855
Web: www.elson.net.au
Email: sales@elson.net.au

National Distribution Centre

38 Eddie Road, Minchinbury
New South Wales 2770
AUSTRALIA

Sales and service all over Australia

Distributed by

Disclaimer: All care has been taken to ensure the information provided in this brochure is accurate and reliable but it must be treated as being of a general nature only. Products in the brochure may change as ELSON is committed to continuous product improvement. Elson provides no guarantee nor accepts responsibility for information contained in the brochure.