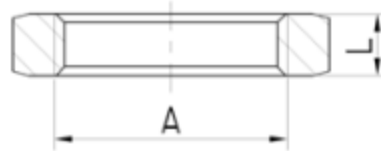


BACK NUT

Brand Name: **elson**



CODE	DESCRIPTION	L(mm)	A
80343	BACK NUT 4mm (1/8") BRASS	3.5	G1/8
80346	BACK NUT 6mm (1/4") BRASS	4	G1/4
80348	BACK NUT 10mm BRASS	6	G3/8
80350	BACK NUT 15mm BRASS	7	G1/2
80352	BACK NUT 15mm CHROME	7	G1/2
80354	BACK NUT 20mm BRASS	7	G3/4
80356	BACK NUT 20mm CHROME	7	G3/4
80358	BACK NUT 25mm BRASS	7	G1
80360	BACK NUT 32mm BRASS	10	G1 1/4
80362	BACK NUT 40mm BRASS	12	G1 1/2
80364	BACK NUT 50mm BRASS	14	G2

Product Specification & Features

- Maximum Working Temperature: 95°C
- Maximum Working Pressure at 20°C : Water-2000Kpa, Gas-500KPa
- Threads: Complies with AS ISO 7.1, AS ISO 7.2 and AS 1722.2
- Material: DR Brass, Complies with AS 2345
- Suitable for Potable Water – complies with AS/NZS 4020

Standards & Approvals



Elson Australasia Pty Ltd

Tel: 02 9625 7899 Fax: 02 9625 7855

Website: www.elson.net.au E-mail: sales@elson.net.au

Version 1.0

Nov. 2020