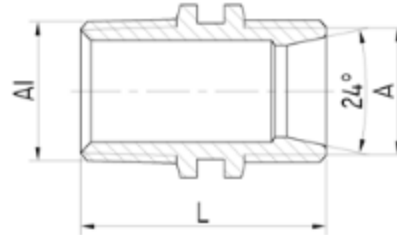
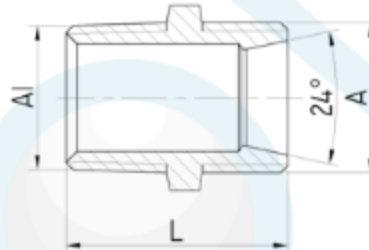


NIPPLE D/ HEX R THREAD SEAL×24° CONE SEAL

Brand Name: **elson**



CODE	DESCRIPTION	L(mm)	A	A1
81241	NIPPLE D/HEX R1/2XG1/2B(15mmMI) BRS R THREAD/24° CONE SEAL	36.1	G1/2B	R1/2
81365	NIPPLE D/HEX R3/4xG1/2B(20x15mm) BRS R THREAD/24° CONE SEAL	37.4	G1/2B	R3/4



CODE	DESCRIPTION	L(mm)	A	A1
81242	NIPPLE HEX R1/2XG1/2B(15mmMI) BRS R THREAD/24° CONE SEAL	31.1	G1/2B	R1/2
81244	NIPPLE HEX R1/2XG1/2B(15mmMI) CHROME R THREAD/24° CONE SEAL	31.1	G1/2B	R1/2
81249	NIPPLE HEX R3/4XG3/4B(20mmMI) BRS R THREAD/24° CONE SEAL	35.4	G3/4B	R3/4
81310	NIPPLE HEX R1/2XG3/4B(15mmx20mm) BRS R THREAD/24° CONE SEAL	34.1	G3/4B	R1/2
81366	NIPPLE HEX R3/4xG1/2B(20mmx15mm) BRS R THREAD/24° CONE SEAL	33.4	G1/2B	R3/4
81368	NIPPLE HEX R3/4xG1/2B(20mmx15mm) C/P R THREAD/24° CONE SEAL	33.4	G1/2B	R3/4

Product Specification & Features

- Maximum Working Temperature: 95°C
- Maximum Working Pressure at 20°C : Water-2000Kpa, Gas-500KPa
- Threads: Complies with AS ISO 7.1, AS ISO 7.2 and AS 1722.2
- Material: DR Brass, Complies with AS 2345
- Suitable for Potable Water – complies with AS/NZS 4020

Standards & Approvals



Elson Australasia Pty Ltd

Tel: 02 9625 7899 Fax: 02 9625 7855

Website: www.elson.net.au E-mail: sales@elson.net.au

Version 1.0

Nov. 2020