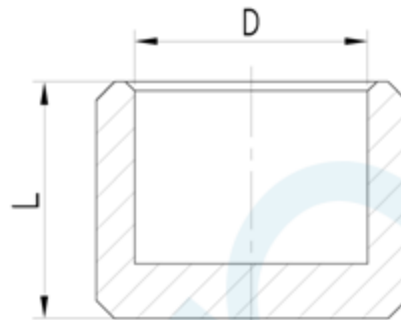


STOP END NO.61

Brand Name: **elson**



| CODE | DESCRIPTION | L(mm) | D |
|-------|------------------------|-------|------|
| 83450 | STOP END NO.61 15mm OD | 13 | DN15 |
| 83452 | STOP END NO.61 20mm OD | 19 | DN20 |
| 83454 | STOP END NO.61 25mm OD | 19 | DN25 |

Product Specification & Features

- Maximum Working Temperature: 95°C
- Maximum Working Pressure at 20°C : Water-2000Kpa, Gas-500KPa
- Threads: Complies with AS ISO 7.1, AS ISO 7.2 and AS 1722.2
- Material: DR Brass, Complies with AS 2345
- Suitable for Potable Water – complies with AS/NZS 4020



Elson Australasia Pty Ltd

Tel: 02 9625 7899 Fax: 02 9625 7855

Website: www.elson.net.au E-mail: sales@elson.net.au

Version 1.0

Nov. 2020