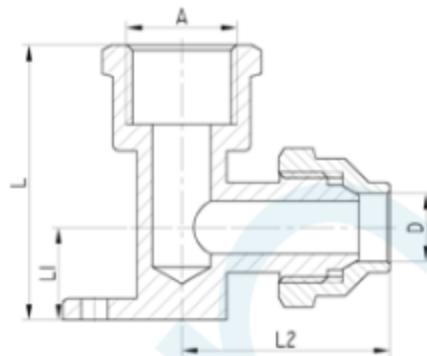


ELBOW 15BP LUGGED

Brand Name: **elson**



CODE	DESCRIPTION	L(mm)	L1(mm)	L2(mm)	A	D
85673	ELBOW 15BP 15mm FL x 15mm FI CP	52	17.5	39.3	G1/2	DN15
85674	ELBOW 15BP 15mm FL x 15mm FI BRS	52	17.5	39.3	G1/2	DN15
85676	ELBOW 15BP 20mm FL x 15mm FI BRS	56	20	42.2	G1/2	DN20

Product Specification & Features

- Maximum Working Temperature: 95°C
- Maximum Working Pressure at 20°C : Water-2000Kpa, Gas-500KPa
- Threads: Complies with AS 1722.2
- Material: DR Brass, Complies with AS 2345
- Suitable for Potable Water – complies with AS/NZS 4020

Standards & Approvals



Elson Australasia Pty Ltd

Tel: 02 9625 7899 Fax: 02 9625 7855

Website: www.elson.net.au E-mail: sales@elson.net.au

Version 1.0

Nov. 2020